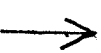
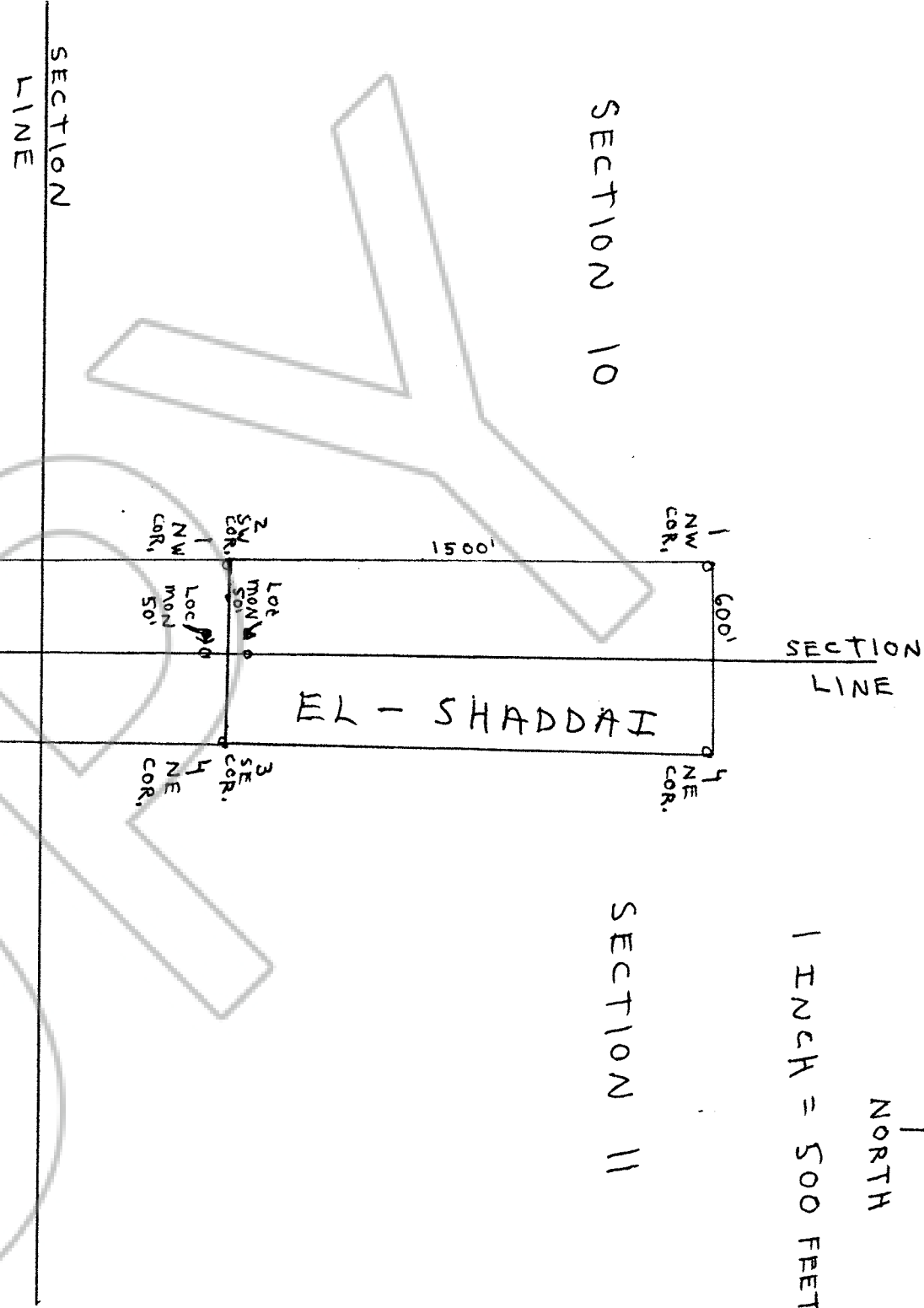


176472



NORTH

1 INCH = 500 FEET



SECTION 15

SECTION 14

SECTION 10

SECTION 11

FILED AT THE REQUEST OF Brad & Thelma  
 on May 21 2001 at 17 mins. past 8 A.M.  
 RECORDS & PLANS DIVISION, NEVADA M. N. REBALEATI, Recorder  
 File No. 176472 Fee \$ 30.00

MAP OF EL-SHADDAI AND ELOHIM LODE CLAIMS  
 EUREKA COUNTY, NEVADA - EUREKA MINING DISTRICT,  
 LOCATED MAY 18, 2001 BY F.L. HARRISON  
 7820 N. 130TH E. AVE, OWASSO, OKLA. 74055.  
 ELOHIM CLAIM IS IN NE<sup>1</sup>/<sub>4</sub> SECTION 15, NW<sup>1</sup>/<sub>4</sub> SECTION 14,  
 SE<sup>1</sup>/<sub>4</sub> SECTION 10 AND SW<sup>1</sup>/<sub>4</sub> SECTION 11. EL-SHADDAI CLAIM  
 IS IN SE<sup>1</sup>/<sub>4</sub> SECTION 10 AND SW<sup>1</sup>/<sub>4</sub> SECTION 11. BOTH  
 CLAIMS ARE IN TOWNSHIP 18N AND RANGE 53E.  
 THE MONUMENTS ARE 2" X 2" WOODEN POSTS 4 FEET LONG.