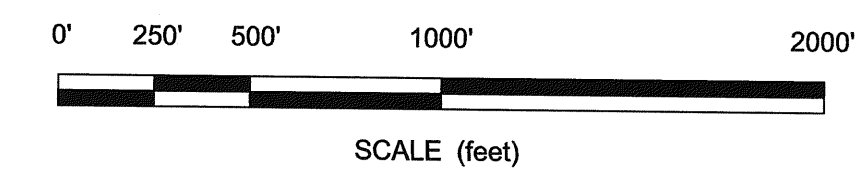
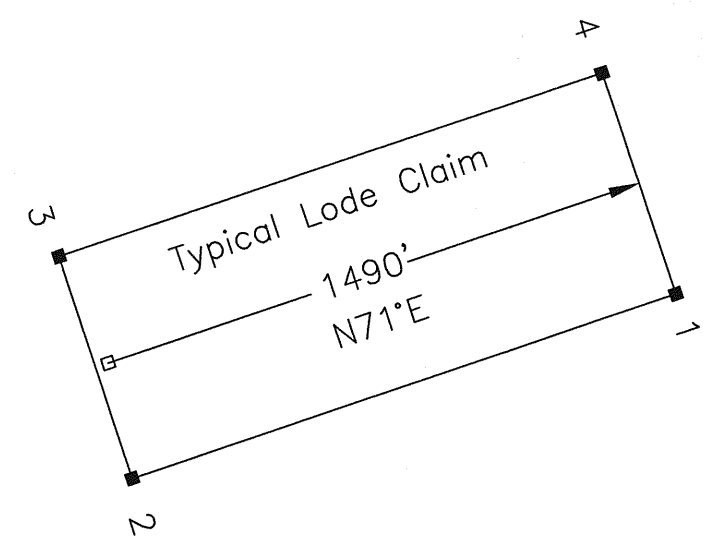


Notes:
 Two mining claims are located in Eureka County, Nevada T31N, R48E, Sections 12 and 13, M.D.B. and M.

Location Date:
 Sansinena #1 and #2 March 8, 2001

- 2 X 2 Wooden Post
- Location Monument
- ⊕ Section Corner



Sansinena #1 and #2 Lode Mining Claims	
Pacific Spar Corporation 12280 Westridge Drive Reno, NV 89511	
Location Date: See NOTES (above)	
Drawn by: elf	Date: 06/04/01
File: Sansinena1	

FILED AT THE REQUEST OF Steven Craig
 on June 5 2001 at 5:52 mins past 1:12 M.
 RECORDS OF EUREKA COUNTY, NEVADA M. N. REBALEATI, Recorder
 File No. 176512 Fee \$ 30.00