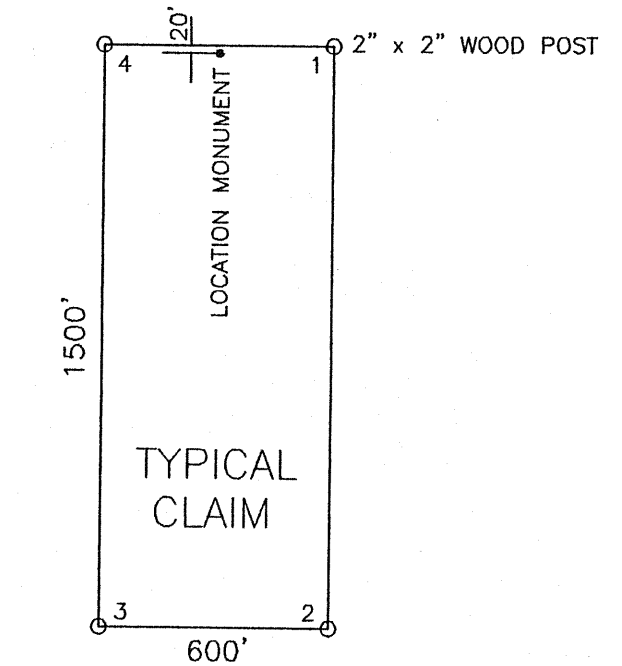
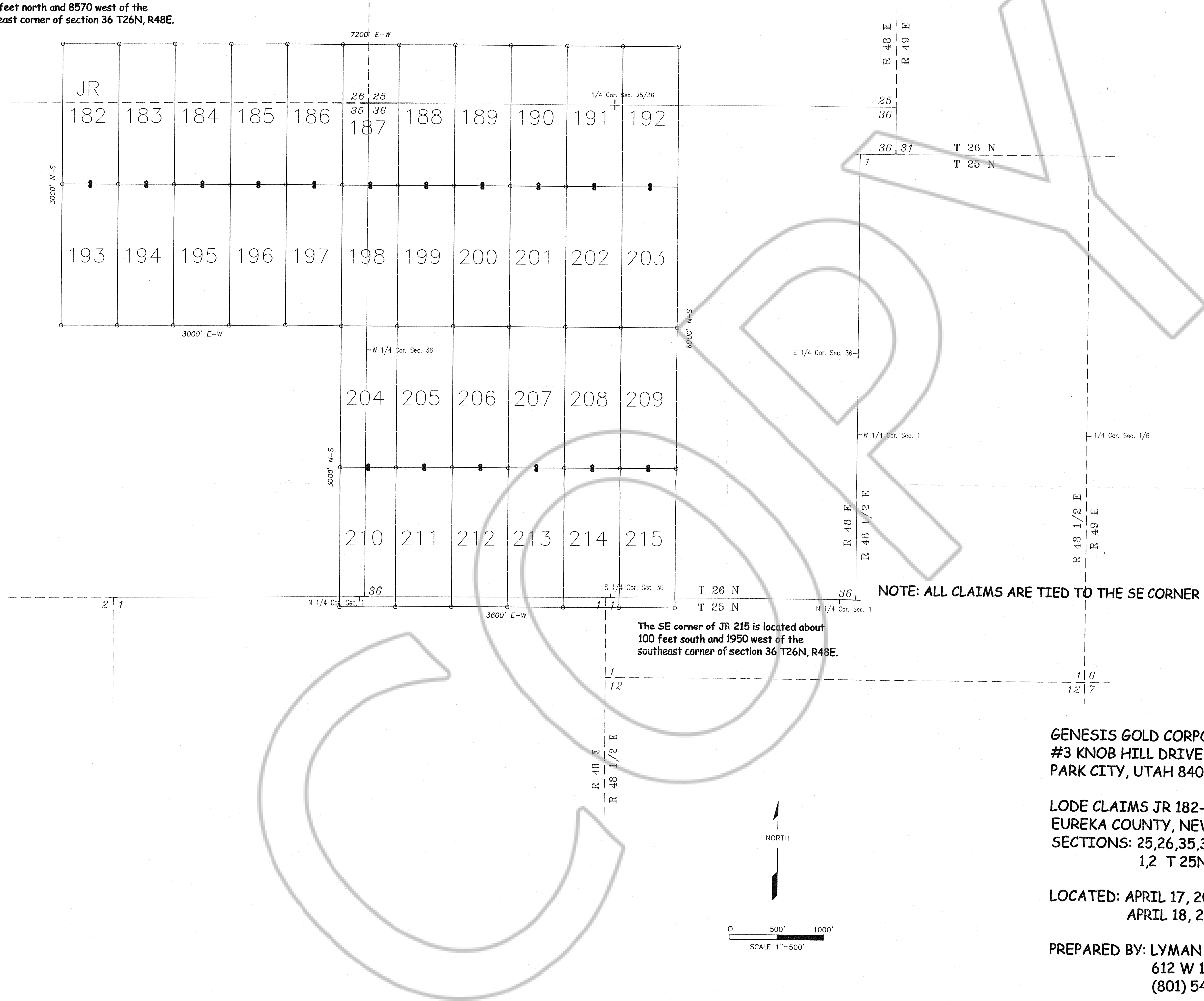


The NW corner of JR 182 is located about 5900 feet north and 8570 west of the southeast corner of section 36 T26N, R48E.



ALL CLAIMS ARE 1500' x 600' UNLESS OTHERWISE NOTED.

NOTE: ALL CLAIMS ARE TIED TO THE SE CORNER OF SECTION 36 T26N R48E

The SE corner of JR 215 is located about 100 feet south and 1950 west of the southeast corner of section 36 T26N, R48E.

GENESIS GOLD CORPORATION
#3 KNOB HILL DRIVE
PARK CITY, UTAH 84098

LODE CLAIMS JR 182-215
EUREKA COUNTY, NEVADA
SECTIONS: 25,26,35,36 T26N, R48E
1,2 T 25N, R48E

LOCATED: APRIL 17, 2001 JR 182-186, 193-197
APRIL 18, 2001 JR 187-192, 198-215

PREPARED BY: LYMAN EXPLORATION & SURVEYING OUTFIT
612 W 1635 N, SUITE 101, CLINTON, UTAH 84015
(801) 540-0317

FILED AT THE REQUEST OF *Genesis Gold Corp*
on *July 16 20 01* at *11* mins past *24* M.
RECORDS OF EUREKA COUNTY, NEVADA M. N. REBALEATI, Recorder
File No. *176745* Fee \$ *510.00*