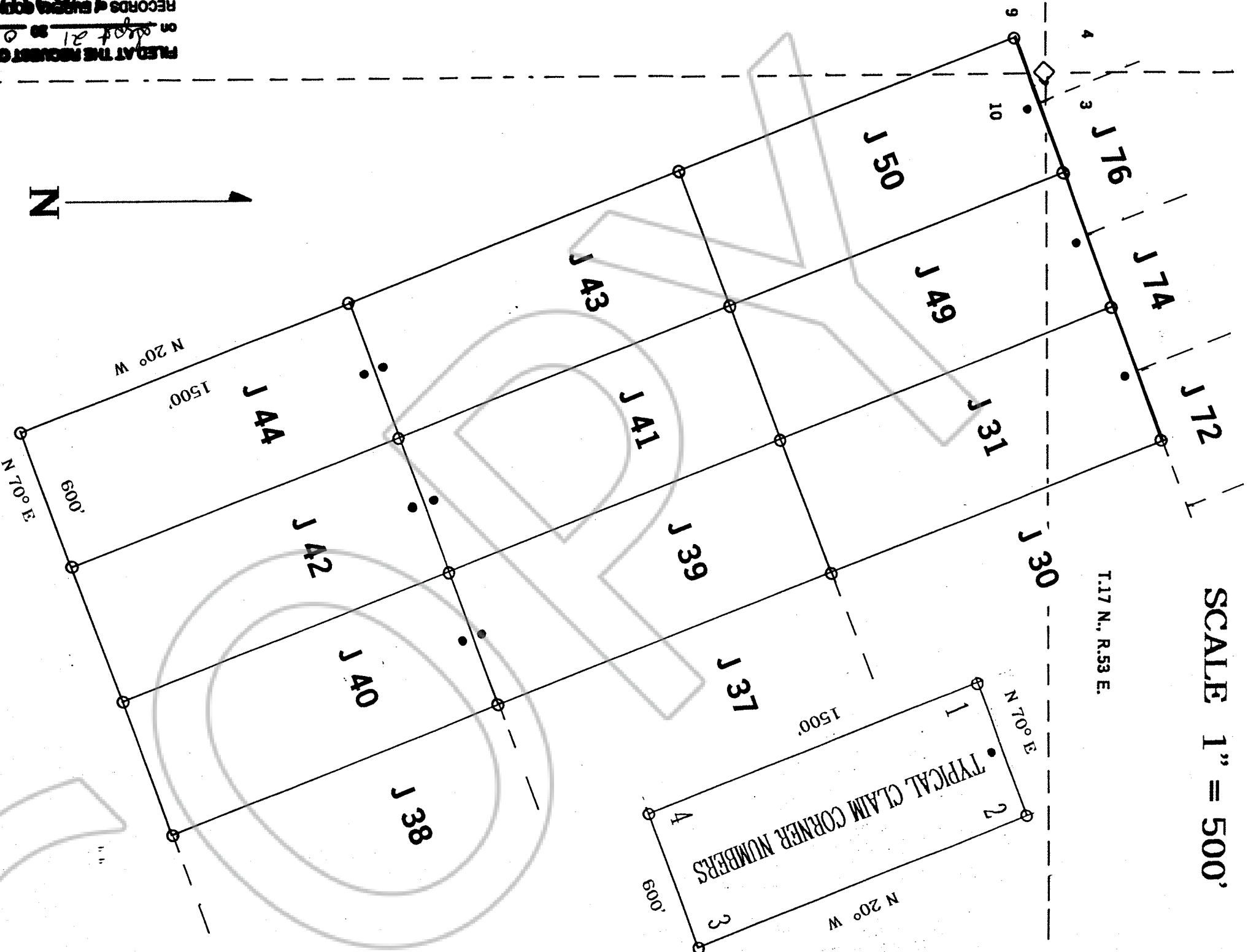


SCALE 1" = 500'

T.17 N., R.53 E.



MAP SHOWING LOCATION OF J 31, J 49, J 50, AND J 39 THROUGH J 44, LOCATED BY WINDFALL VENTURE ON JUNE 26, 2001. THESE CLAIMS ARE SITUATE IN SECTIONS 3, 9 AND 10 OF T. 17 N., R. 53 E., MDB&M, EUREKA COUNTY, NEVADA. THE TIE IS TO THE NORTHWEST CORNER OF THE J 31 CLAIM, WHICH IS SITUATE APPROXIMATELY 5,050 FEET SOUTH AND 14,501 FEET WEST OF THE NORTHWEST CORNER OF SECTION 6, T. 17 N., R. 54 E., MDB&M. THE CLAIMS ARE 600' WIDE AND 1,500' LONG.

FILED AT THE REQUEST OF *Windfall Venture*
 on *August 21* 2001 at *47* *135-00*
 RECORDS & EUREKA COUNTY, NEVADA M. H. REBECK, Recorder
 File No. *176910* Fee \$ *176910*