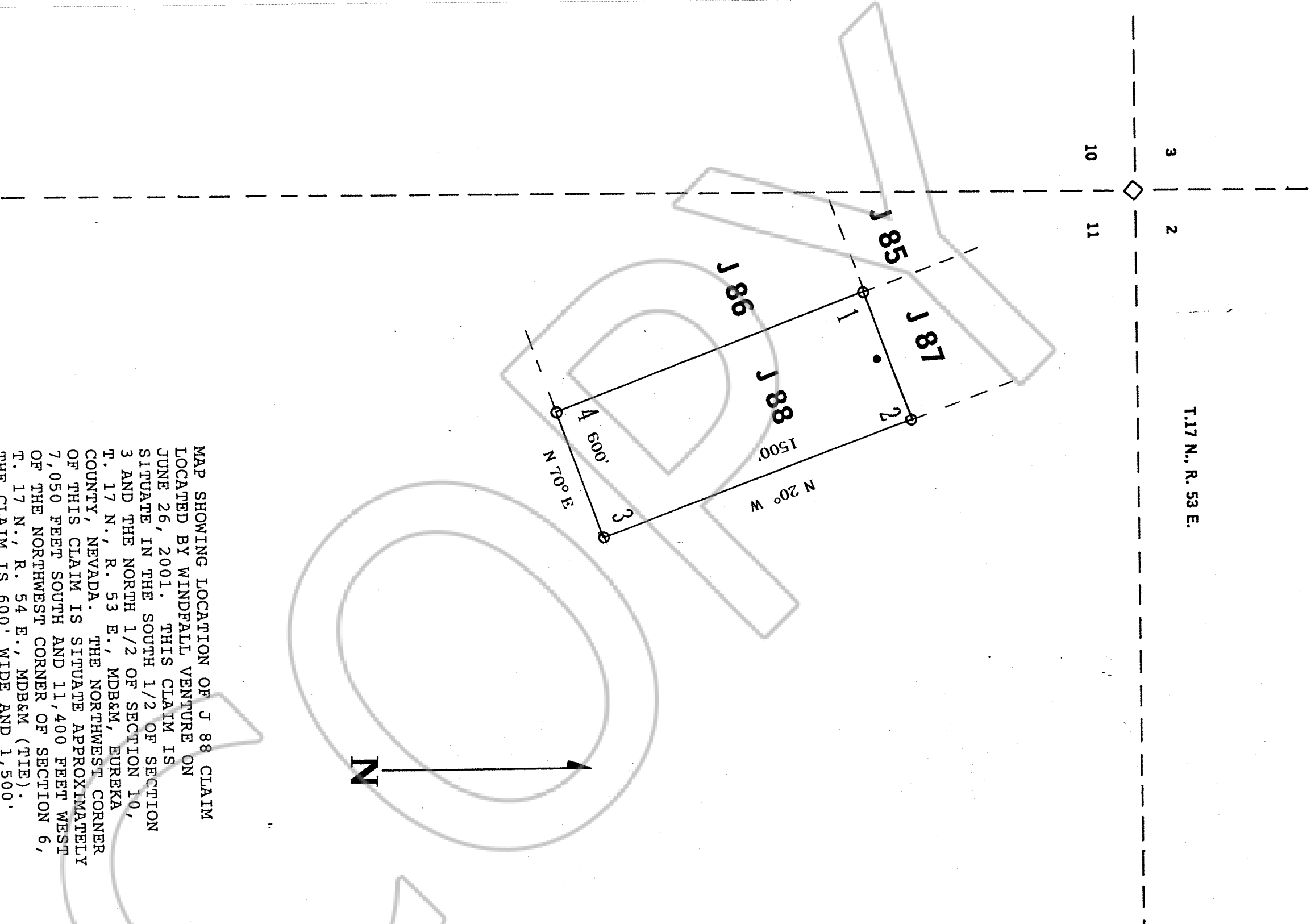


T.17 N., R. 53 E.



MAP SHOWING LOCATION OF J 88 CLAIM
LOCATED BY WINDFALL VENTURE ON
JUNE 26, 2001. THIS CLAIM IS
SITUATE IN THE SOUTH 1/2 OF SECTION
3 AND THE NORTH 1/2 OF SECTION 10,
T. 17 N., R. 53 E., MDB&M, EUREKA
COUNTY, NEVADA. THE NORTHWEST CORNER
OF THIS CLAIM IS SITUATE APPROXIMATELY
7,050 FEET SOUTH AND 11,400 FEET WEST
OF THE NORTHWEST CORNER OF SECTION 6,
T. 17 N., R. 54 E., MDB&M (TIE).
THE CLAIM IS 600' WIDE AND 1,500'
LONG.

FILED AT THE REQUEST OF Windfall Venture
on Sept 21 01 at 11 mins. past 2PM
RECORDS OF EUREKA COUNTY, NEVADA M. N. REBALEATI, Recorder
File No. 176923 Fee \$ 15.00

SCALE 1" = 500'