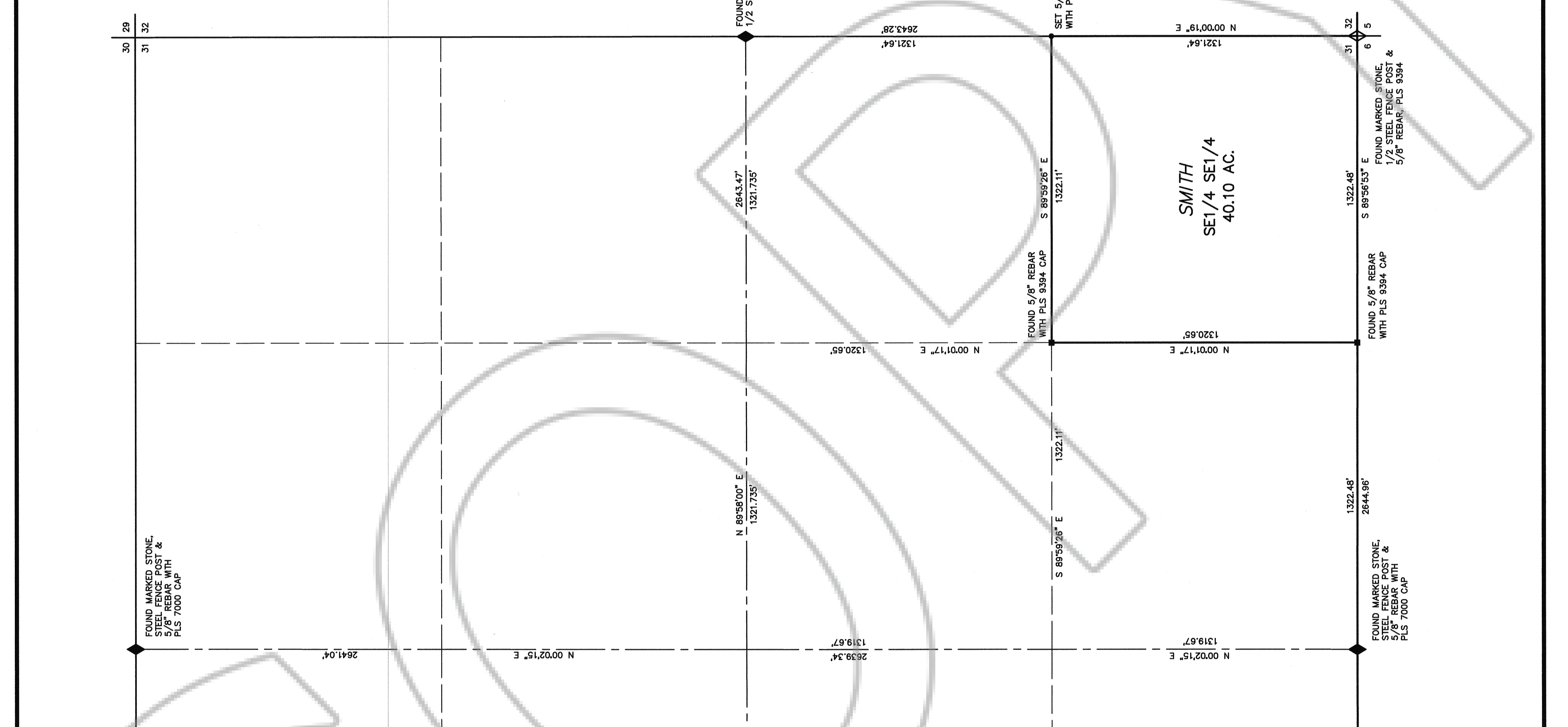
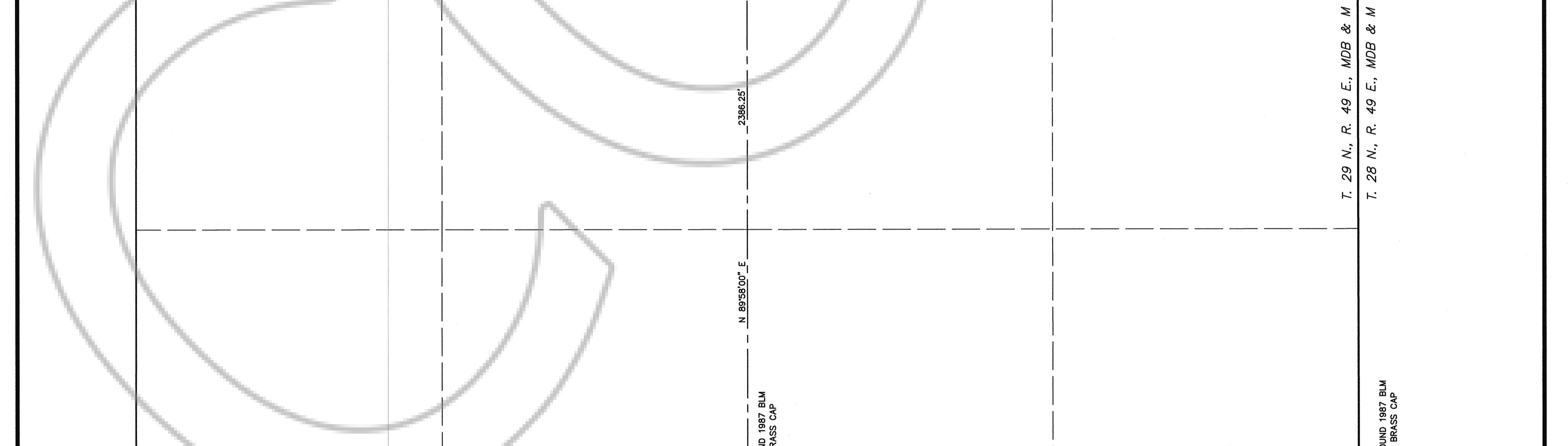


T. 29 N., R. 48 E., MDB & M
 T. 29 N., R. 49 E., MDB & M



SURVEYOR'S CERTIFICATE
 I, DUANE V. MERRILL, A PROFESSIONAL LAND SURVEYOR LICENSED IN THE STATE OF NEVADA, CERTIFY THAT:
 1. THIS PLAT REPRESENTS THE RESULTS OF A SURVEY CONDUCTED UNDER MY DIRECT SUPERVISION AT THE INSTANCE OF LINDA S. SMITH.
 2. THE LANDS SURVEYED LIE WITHIN SECTION 31, TOWNSHIP 29 NORTH, RANGE 49 EAST, MDB & M., AND THE SURVEY WAS COMPLETED ON JULY 19, 2001.
 3. THIS PLAT COMPLES WITH THE APPLICABLE STATE STATUTES AND ANY LOCAL ORDINANCES IN EFFECT ON THE DATE THAT THE GOVERNING BODY GAVE ITS FINAL APPROVAL.
 4. THE MONUMENTS DEPICTED ON THE PLAT ARE OF THE CHARACTER SHOWN, OCCUPY THE POSITIONS INDICATED AND ARE OF SUFFICIENT NUMBER AND DURABILITY.

DUANE V. MERRILL, P.L.S. 7000

NOTES
 1) BASIS OF BEARINGS: THE LINE BETWEEN THE FOUND SOUTHWEST CORNER AND THE FOUND WEST 1/4 CORNER OF SECTION 31, TAKEN AS N 0° 04' 00\"/>

LEGEND
 ◊ = FOUND SECTION CORNER AS NOTED
 ◆ = FOUND 1/4 CORNER AS NOTED
 ● = SET 5/8\"/>

FILE NO. 176928
 FILED AT THE REQUEST OF
 HIGH DESERT ENGINEERING.
 DATE Sept 24, 2001
 TIME 10:00 A.M.
 M.N. Rebaleath
 EUREKA COUNTY RECORDER
Merrill

RECORD OF SURVEY
 FOR
LINDA S. SMITH
 IN
 SECTION 31, T. 29 N., R. 49 E., M.D.B. & M.
 EUREKA COUNTY, NEVADA

201041
 HIGH DESERT ENGINEERING
 640. IDAHO STREET
 ELKO, NEVADA, 89801
 (775) 738-4053