



**MAP OF THE OLUM GROUP
OF LODE CLAIMS
(South Block)**

Located in sec. 25-26, 35-36 T22N, R49E
& sec. 1-2 T21N, R49E

Unknown mining district, Eureka County, Nevada

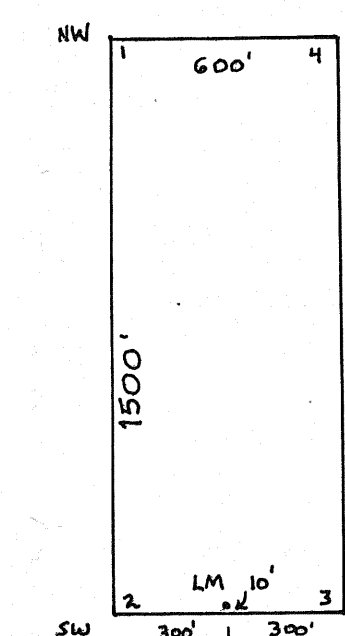
Located by: White Knight Gold (U.S.), Inc.
4790 Caughlin Parkway #137
Reno, NV 89509-0907

Location Dates:
OLUM 41-52, 54, 57-70, 92-94 9/18/2001
OLUM 96-111, 113, 71, 73, 75, 77 9/19/2001
OLUM 72, 74, 76 9/20/2001

Corner monumentation and marking completed by 11/02/2001

Tie: The NE corner of Olum 106 is approximately 207' at a bearing of S2E' from the 1/4 corner of sec. 1 T21N R49E

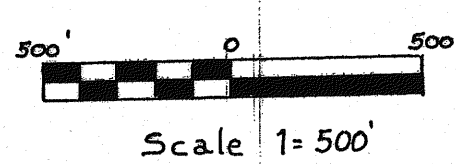
Typical claim:



All claims are 1500' x 600'

Location Monuments are set in 10' from end lines, except where noted (Olum 92-94 LM's are set in 20' from end lines)

All monuments are 1 1/2" x 1 1/2" wooden posts marked with metal tags



• = Location Monument

FILED AT THE REQUEST OF *White Knight Gold*
on *Dec 13* 20 *01* at *27* mins past *2* P.M.
RECORDS OF EUREKA COUNTY, NEVADA M. H. FERRANTE, Recorder
File No. *177481* Fee \$ *814.00*

OLUM 41-52, 54, 57-77, 92-94, 96-112, 113 Eureka County, Nevada		
SCALE: 1" = 500'	APPROVED BY R. G. Cuffney	DRAWN BY R. G. Cuffney
White Knight Gold (U.S.), Inc.		
		DRAWING NUMBER 704127-68.dwg