

MAP OF THE TOAST GROUP OF LODE CLAIMS

Located in sec. 5, 8, 9, T22N, R50E

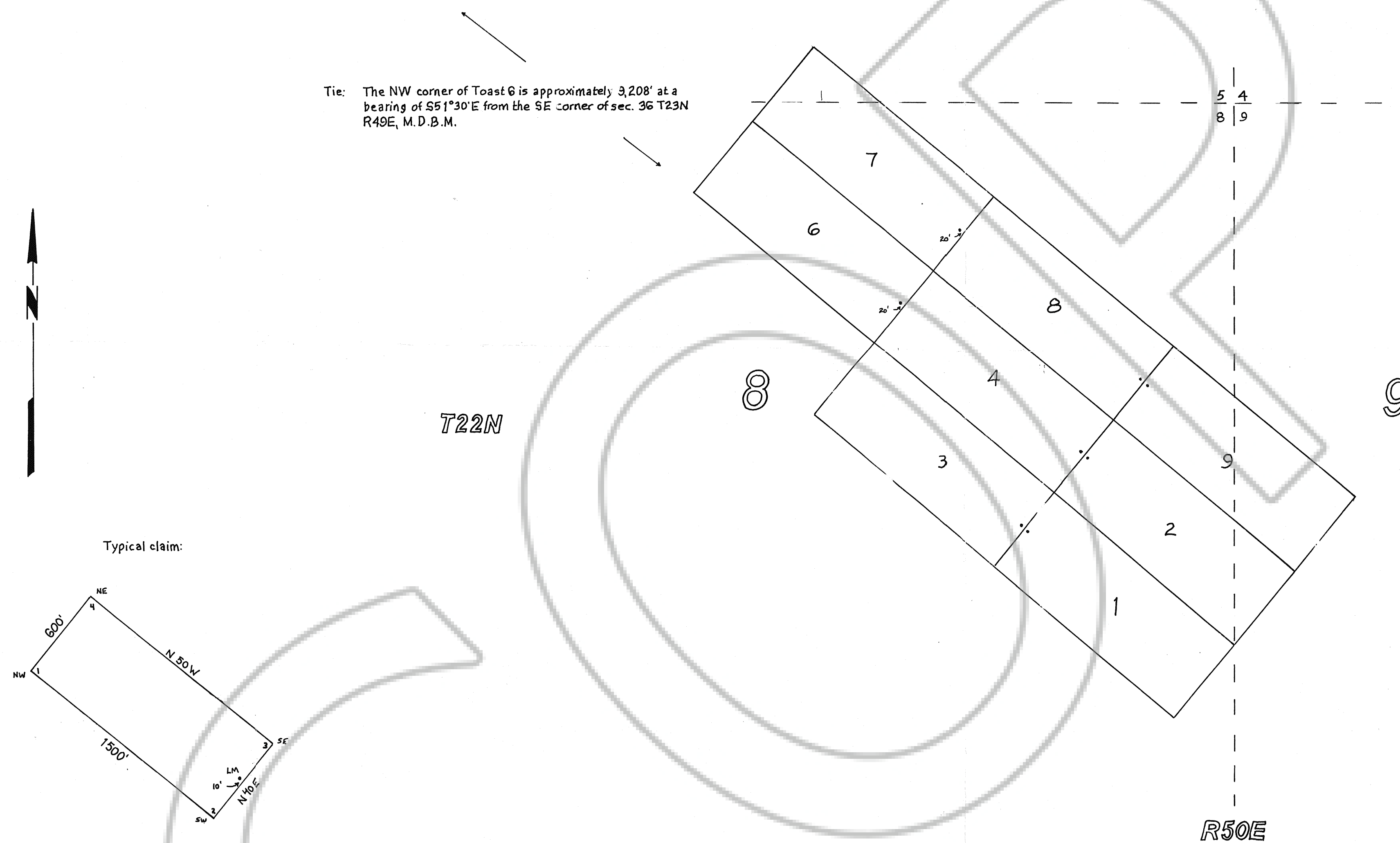
Unknown mining district, Eureka County, Nevada

Tie: The NW corner of Toast 6 is approximately 3,208' at a bearing of S51°30'E from the SE corner of sec. 36 T23N R49E, M.D.B.M.

Located by: White Knight Gold (U.S.), Inc.
4790 Caughlin Parkway #137
Reno, NV 89509-0907

Location Date: TOAST 1-4, 6-9 11/08/2001

Corner monumentation and marking completed 11/08/2001



All claims are 1500' long x 600' wide

Location Monuments are set in 10' from end lines, except as noted
(Toast 6 & 7 are set in 20' from end lines)

All monuments are 1 1/2" x 1 1/2" wooden posts marked with metal tags

EXPLANATION

- Location Monument
- section line (projected)

Scale: 1" = 500'

FILED AT THE REQUEST OF White Knight Gold
on 11-24-01 at 4:42 min. past 10 M.
RECORDS OF EUREKA COUNTY, NEVADA M. N. REBALEATI, Recorder
File No. 177518 Fee \$ 124.00

TOAST 1-4, 6-9 Lode Claims
Eureka Co., NV

SCALE: 1" = 500'	APPROVED BY R.G. Cuffney	DRAWN BY RGC
DATE: 12/23/2001	White Knight Gold (U.S.), Inc.	
		DRAWING NUMBER