

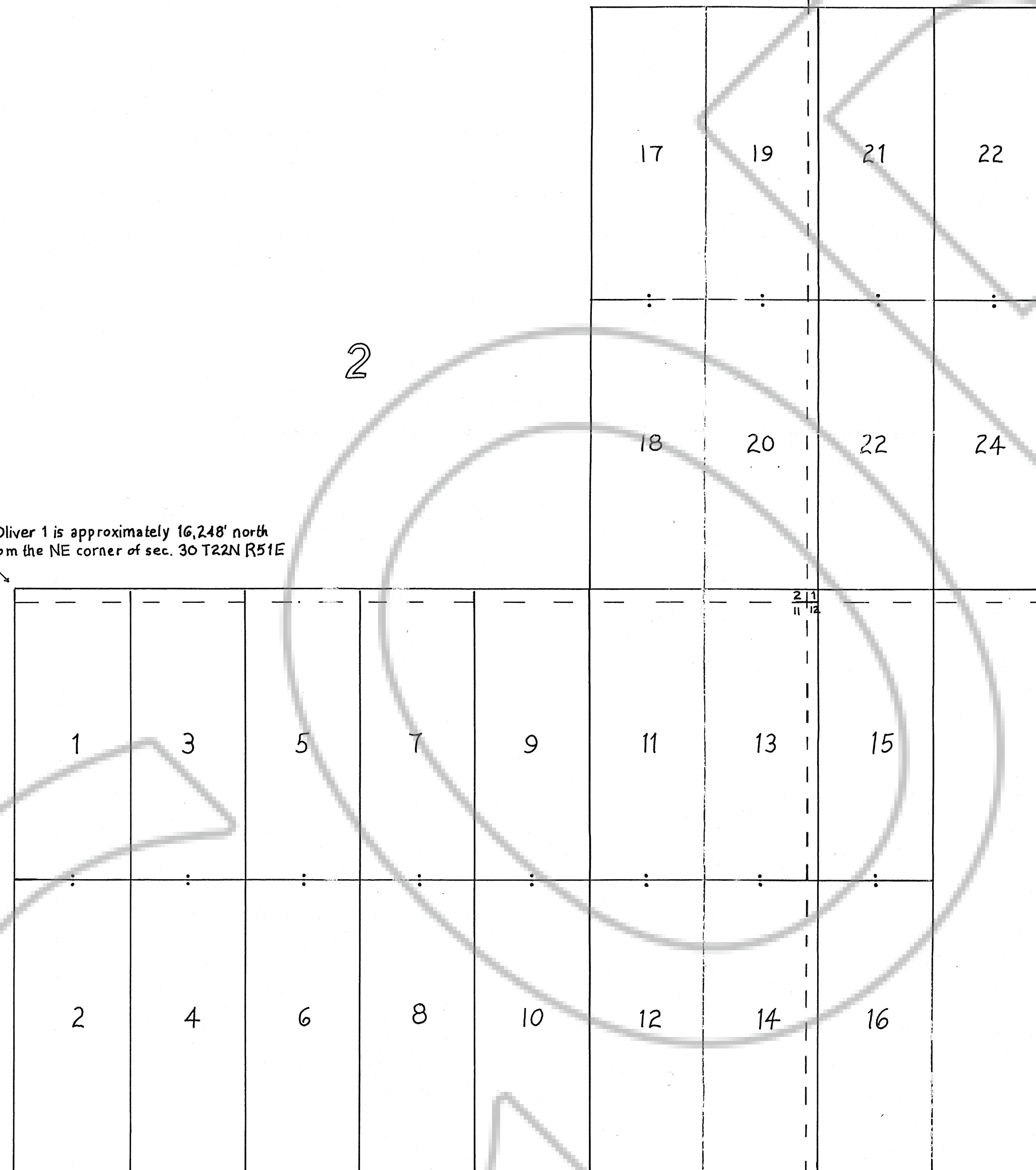
MAP OF THE OLIVER GROUP
OF LODE CLAIMS

Located in sec. 1, 2, 11, 12 T22N, R51E

Unknown mining district, Eureka County, Nevada

T22N

Tie: The NW corner of Oliver 1 is approximately 16,248' north and 14,667' west from the NE corner of sec. 30 T22N R51E



11

12

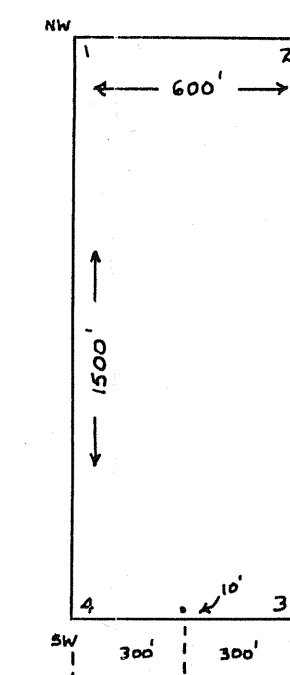
R51E

Located by: White Knight Gold (U.S.), Inc.
4790 Caughlin Parkway #137
Reno, NV 89509-0907

Location Date: OLIVER 1-24 10/5/2001

Corner monumentation and marking completed by 10/28/2001

Typical claim:

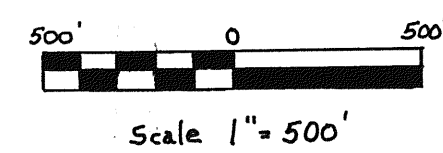


All claims are 1500' long x 600' wide

Location Monuments are set in 10' from end lines

All monuments are 1 1/2" x 1 1/2" wooden posts marked with metal tags

- Location Monument
- - - section line (projected)



FILED AT THE REQUEST OF *White Knight Gold*
on *Dec 21 20 01*, at *52* *pm*, page *10*
RECORDS OF EUREKA COUNTY, NEVADA H. H. REBELENTI, Recorder
File No. *177543* Fee \$ *364.00*

Oliver 1-24 Eureka County, Nevada		
SCALE: 1" = 500'	APPROVED BY R. G. Cuffrey	DRAWN BY RGC
DATE: 12/22/2001	White Knight Gold (U.S.), Inc.	
		DRAWING NUMBER