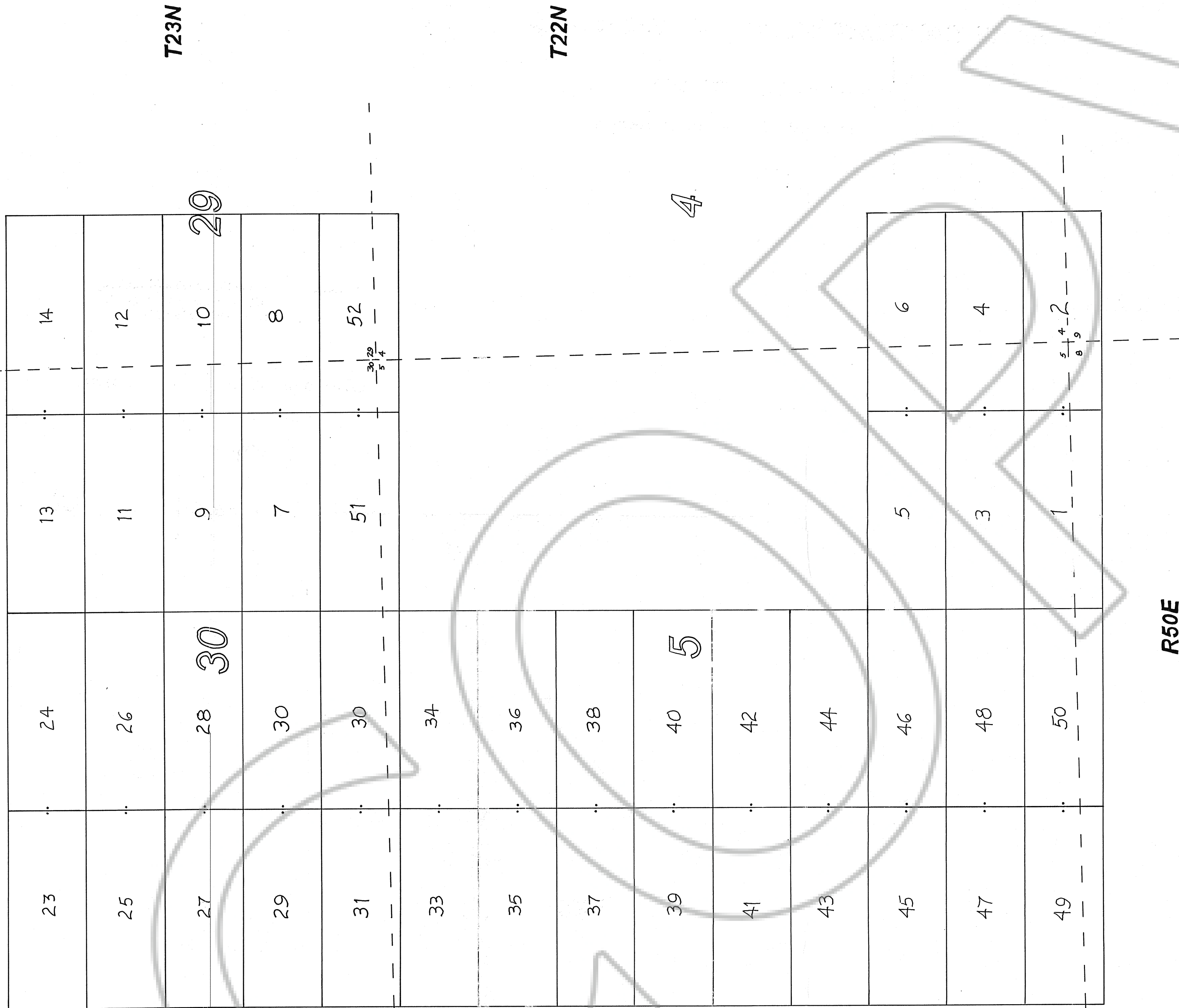


MAP OF THE GIN GROUP  
OF LODE CLAIMS

Located in sec. 29 - 30 T23N, R60E  
& sec. 4 - 5, 8 - 9 T22N, R 50E

Unknown mining district, Eureka County, Nevada



SE corner  
sec. 36  
T23N R49E

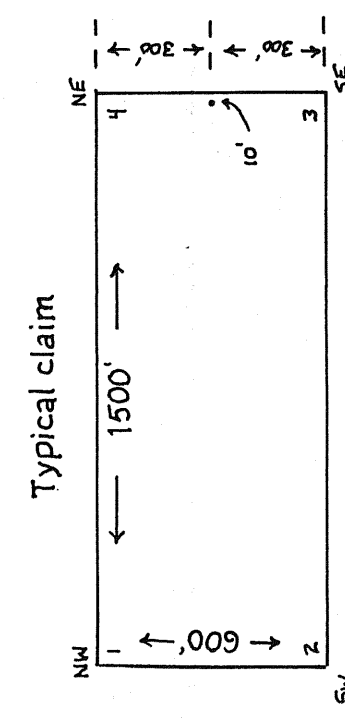
6397' N 67°E

Locator: White Knight Gold (U.S.), Inc.  
4790 Caughlin Parkway #137  
Reno, NV 89509-0907

Location Dates:  
GIN 29-42 9/26/2001  
GIN 1-14, 23-28 10/4/2001  
GIN 43 - 60 10/27/2001  
GIN 51 - 52 10/28/2001

Corner monumentation and marking completed by 10/28/2001

R50E



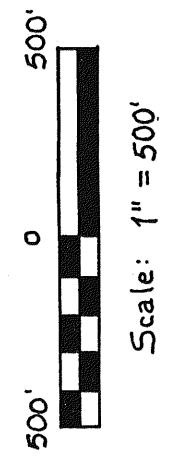
All claims are 1500' long x 600' wide

Location Monuments are set in 10' from end lines

All monuments are 1 1/2" x 1 1/2" wooden posts marked with metal tags

Note: The NW corner of GIN 23 is approximately 6397' at a bearing of N 67° E from the SE corner of sec. 36 T23N R49E

--- = Section Line (projected)  
• = Location Monument



FILED AT THE REQUEST OF White Knight Gold  
on Dec 24 2001 at 16 3:00 PM  
RECORDS OF EUREKA COUNTY, NEVADA IN THE MINERAL CLERK'S  
OFFICE  
File No. 177588 Page 664

GIN 1-14, 23-52 Eureka County, Nevada		
SCALE: 1" = 500'	APPROVED BY: R. G. Cuffney	DRAWN BY: R. G. Cuffney
DATE: 12/22/01	White Knight Gold (U.S.), Inc.	
		DRAWING NUMBER

177588