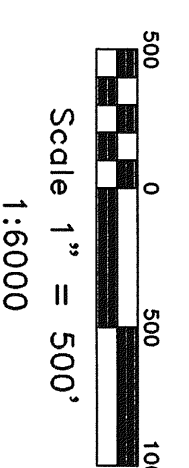
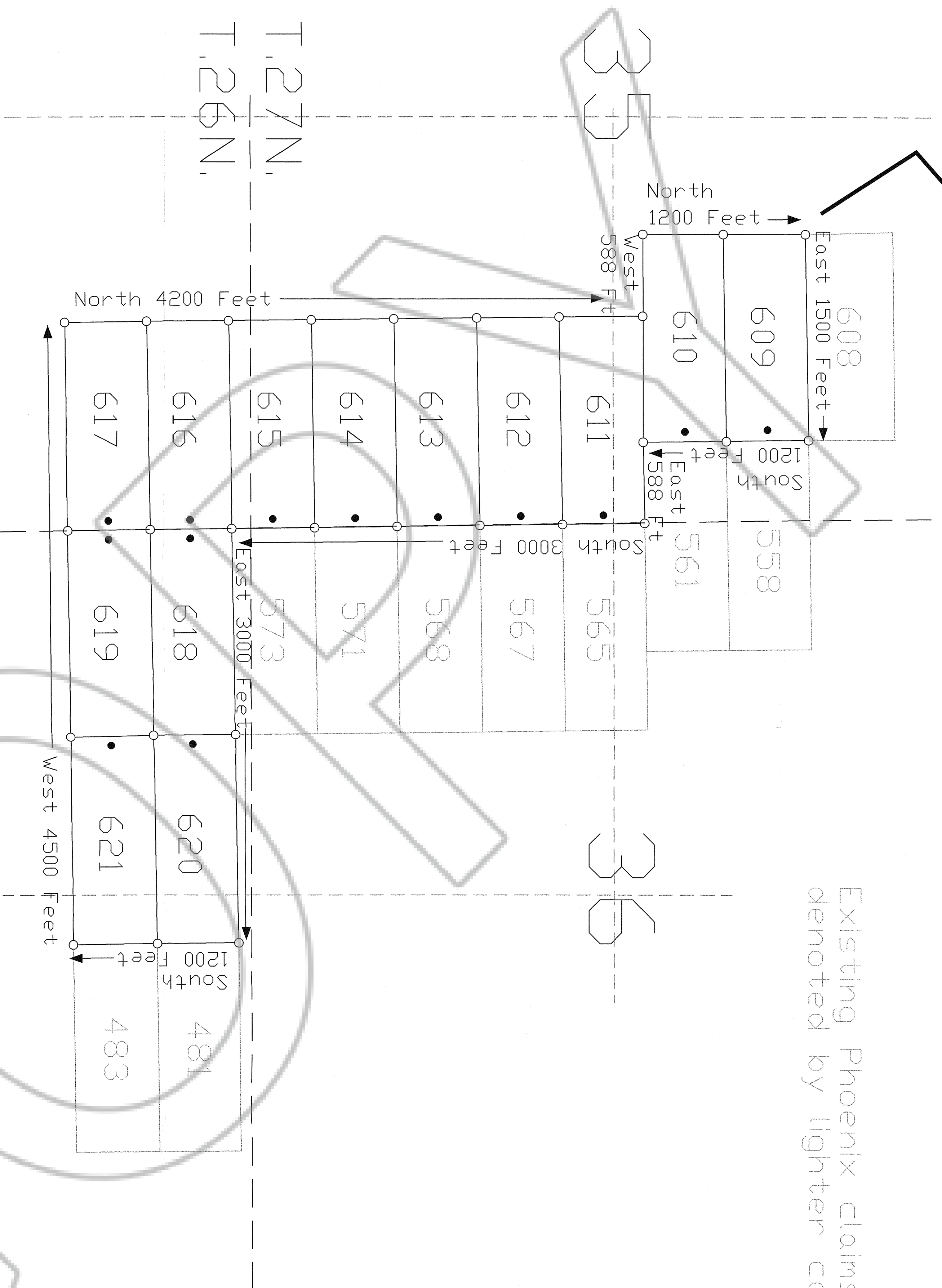


TIE POINT DATA:
 THE NW CORNER OF PHOENIX 609 IS
 APPROXIMATELY 1158 FEET SOUTH AND
 3041 FEET EAST OF THE NW CORNER
 OF SECTION 35, T.27N., R.52E., M.D.P.M.



Existing Phoenix claims
 denoted by lighter coloring.



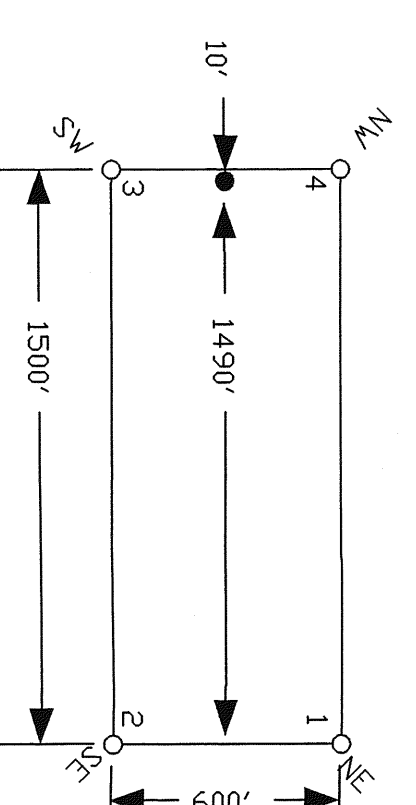
02

01

LOCATION DATES:
 10/21/01 - Phoenix 609-621

LOCATION MONUMENTS SET 10' FROM CLAIM END
 CENTERLINES. ALL LOCATION MONUMENTS AND CLAIM
 POSTS ARE 2"X2"X4' WOODEN STAKES.

DASHED SECTION LINES INDICATE PROJECTED SECTIONS.



TYPICAL CLAIM

FILED AT THE REQUEST OF *Golden Gryphon USA Inc.*
 on *10/20/01* at *5:11* P.M. *11/4* M.
 RECORDS OF *609*, NEVADA, N. REBALANCE, Recorder
 Fee \$ *152.00*

	310 SILVER STREET ELKO, NV 89801 FAX: (775) 778-0687	Golden Gryphon USA Inc. 1400 Tanager Place RR21, Roberts Creek, BC, VON 2W1 Phoenix Claims 609-621 T.26&27N., R.52E., Eureka County, Nevada
	DATE: October 2001 PRINTED AT: PHOENIX, ARIZONA PLOT SCALE: 1" = 500'	DRAWN BY: