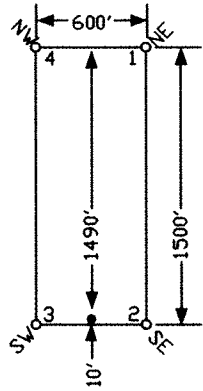
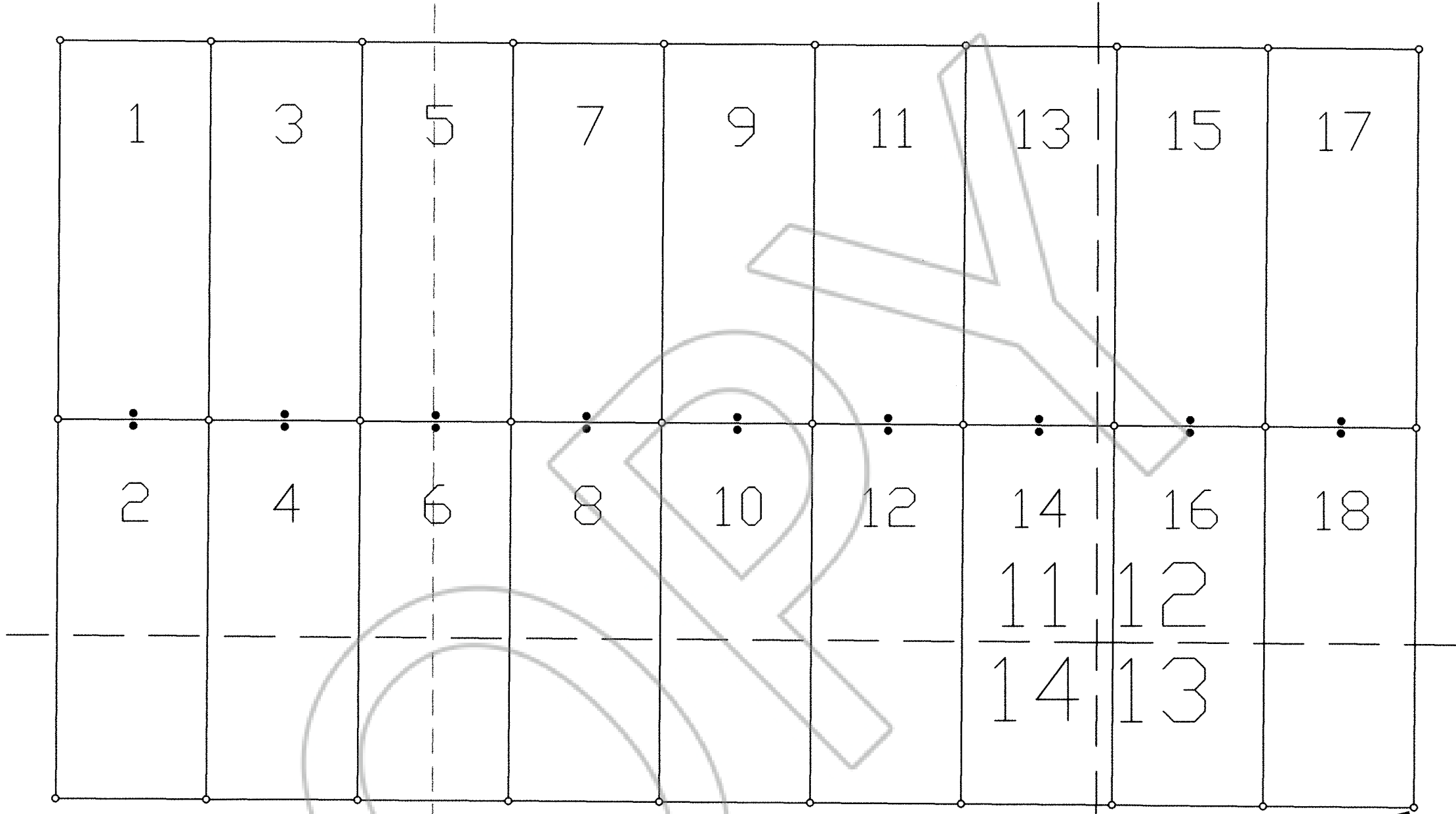


TYPICAL CLAIM



LOCATION DATES:  
10/30/01 - CCS 1-18




TIE POINT DATA:  
THE SE CORNER OF CCS 18 IS APPROXIMATELY  
9,340 FEET WEST AND 10,205 FEET NORTH OF THE  
NE CORNER OF SECTION 30, T.22N., R.51E., M.D.B.M.

NOTES:  
LOCATION MONUMENTS SET 10' FROM CLAIM END  
CENTERLINES. ALL LOCATION MONUMENTS AND  
CLAIM POSTS ARE 2"x2"x4' WOODEN STAKES.

DASHED SECTION LINES INDICATE PROJECTED SECTIONS.

FILED AT THE REQUEST OF KM Exploration  
on Jan 23 20 01 at 4:22 mins. past 1 p.m.  
RECORDS of EUREKA COUNTY, NEVADA M. H. REBALEATI, Recorder  
File No. 177682 Fee \$ 274.00

 310 SILVER STREET PH: (775) 778-0668 ELKO, NV 89801 FAX: (775) 778-0667	<b>KM Exploration</b> 310 Silver Street Elko, NV 89801 CCS Claims 1-18 T.22N., R.50E.; Eureka County, Nevada	
	DATE: December 2001	DRAWN BY: javis