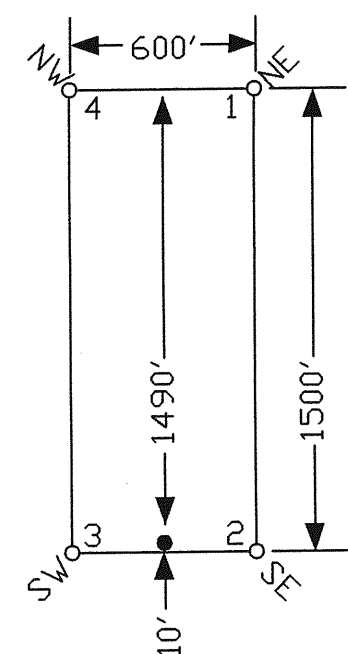
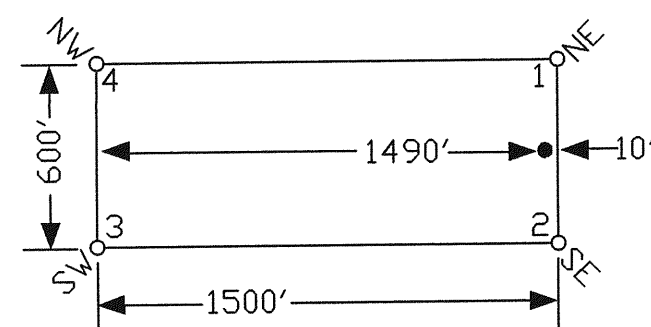
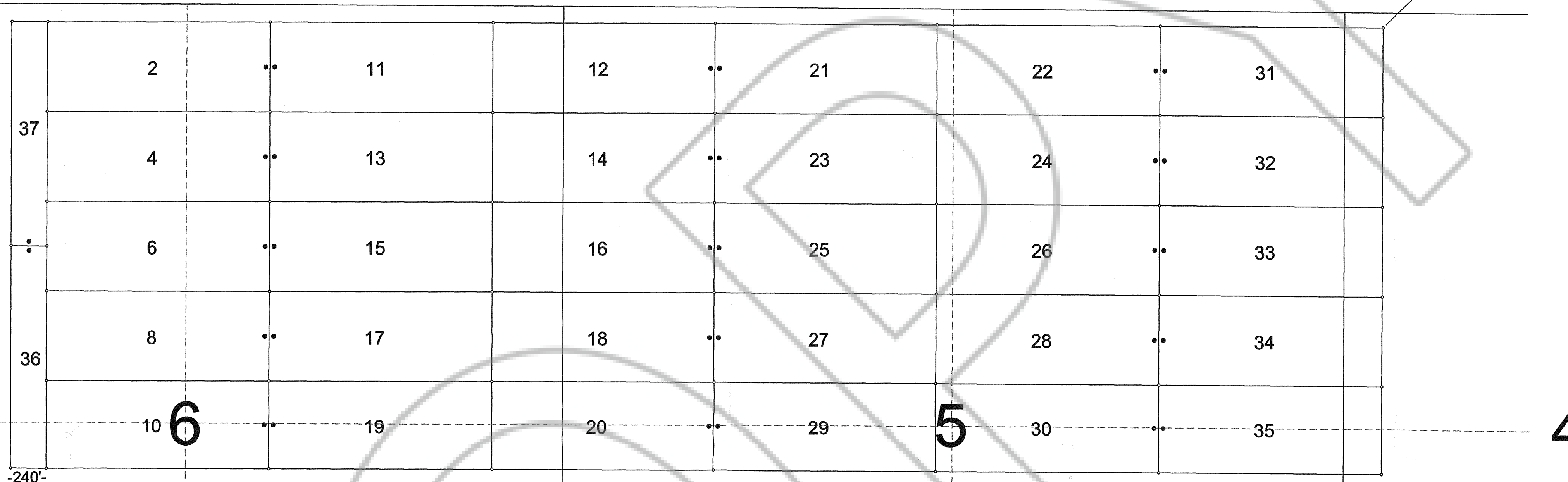
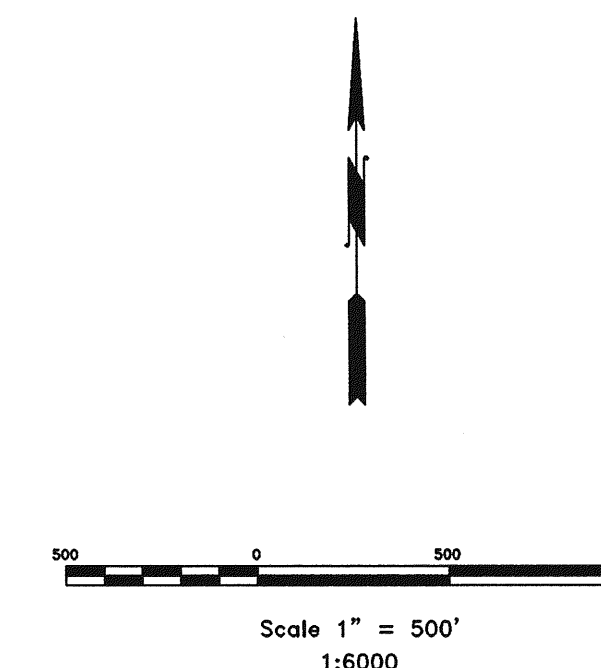


TYPICAL CLAIMS



TIE POINT DATA:
 THE NE CORNER OF BLUE SOUTH 31 LIES APPROXIMATELY
 108.5 FEET SOUTH AND 1585 FEET EAST OF THE SE CORNER
 OF SECTION 32, T.26N., R.49E., M.D.B.M.



NOTES:
 LOCATION MONUMENTS SET 10' FROM CLAIM END
 CENTERLINES. ALL LOCATION MONUMENTS AND
 CLAIM POSTS ARE 2"x2"x4' WOODEN STAKES.

LOCATION DATES:
 01/13/02 - Blue South 22,24,26,28,30-35
 01/17/02 - Blue South 2,4,6,8,10-21,23,25,27,29
 01/21/02 - Blue South 36-37

FILED AT THE REQUEST OF *Cortez Joint Venture*
 on *Feb 19 02* at *3:41* mins. past *2 P.M.*
 RECORDS OF EUREKA COUNTY, NEVADA (S. N. REBA) (S. N. REBA) Recorder
 File No. **177809** File S. *484.00*



310 SILVER STREET
 PH: (775) 778-0668 ELKO, NV 89801 FAX: (775) 778-0687

Cortez Joint Venture
 HC Box 1250, Crescent Valley, NV 89821
 Blue South Claims 2,4,6,8,10-37
 T.25N.,R.49E.; Eureka County, Nevada

DATE: January 2002	ACAD FILE NAME blue_so.dwg	DRAWN BY sms
PLOT SCALE 1"=500'		