

**SURVEYOR'S CERTIFICATE:**

1. Wm. Michael Donovan, Jr., a Professional Land Surveyor licensed in the State of Nevada, certify that:

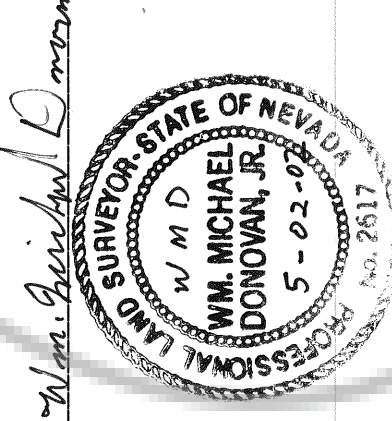
1. This plat represents the results of a survey conducted under the authority of the State of Nevada, and the plat is a true and correct copy of the original as filed in the office of the Surveyor General of the State of Nevada.

2. The lands surveyed lie within portions of Sections 28 AND 33, T20N R53E M88M, Eureka County, Nevada, and the survey was completed in JULY, 2001.

3. This plat complies with the applicable state statutes and any local ordinances in effect on the date that the governing body gave its approval.

4. The monuments depicted on the plat are of the character shown, occupy the positions indicated and are of sufficient number and durability.

Wm. Michael Donovan, Jr.  
Professional Land Surveyor  
# 2817



SEE SECTION CORNER DETAIL FOR REFERENCE

SECTION CORNER DETAIL  
SEE PARCEL MAP #17296

SEE MINING CLAIM MAP #135095  
LH 138

U.S.D.A. / B.L.M.  
07-340-08

**LEGEND:**

- O = Set 5/8 rebar with plastic cap PLS #2617
- - - = Claim lines
- - - = Parcel lines
- - - = Section lines
- ⊙ = Calculated position, nothing set
- ⊕ = Ground control station

**RECORDER'S CERTIFICATE:**

Filed for record this 3rd day of May, 2002, at 12 minutes past 11 o'clock AM, at the request of:

*Sierra Pacific Communications*

File number: 178085

Official Records of Eureka County, Nevada  
County Recorder  
*M.A. Rebeleak*  
Deputy

**NOTE:**

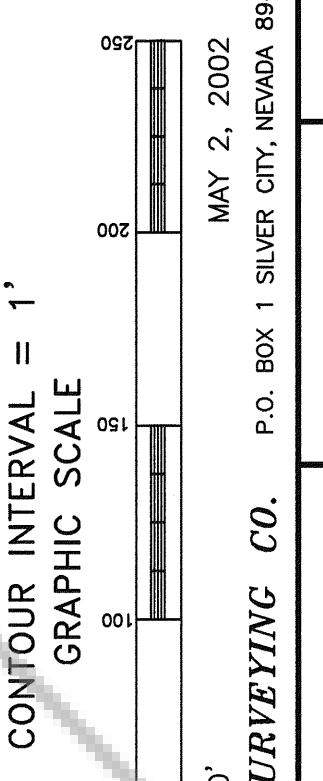
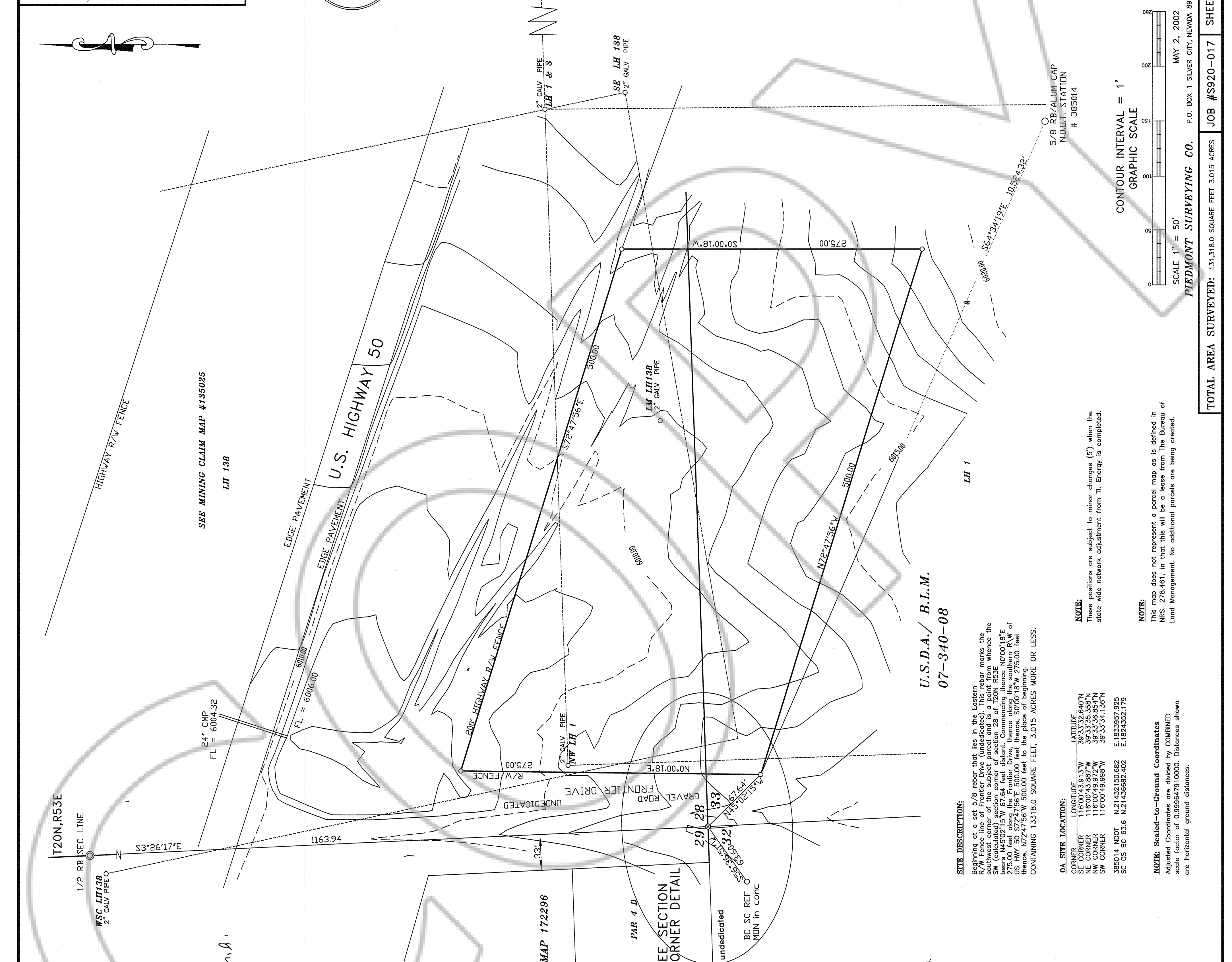
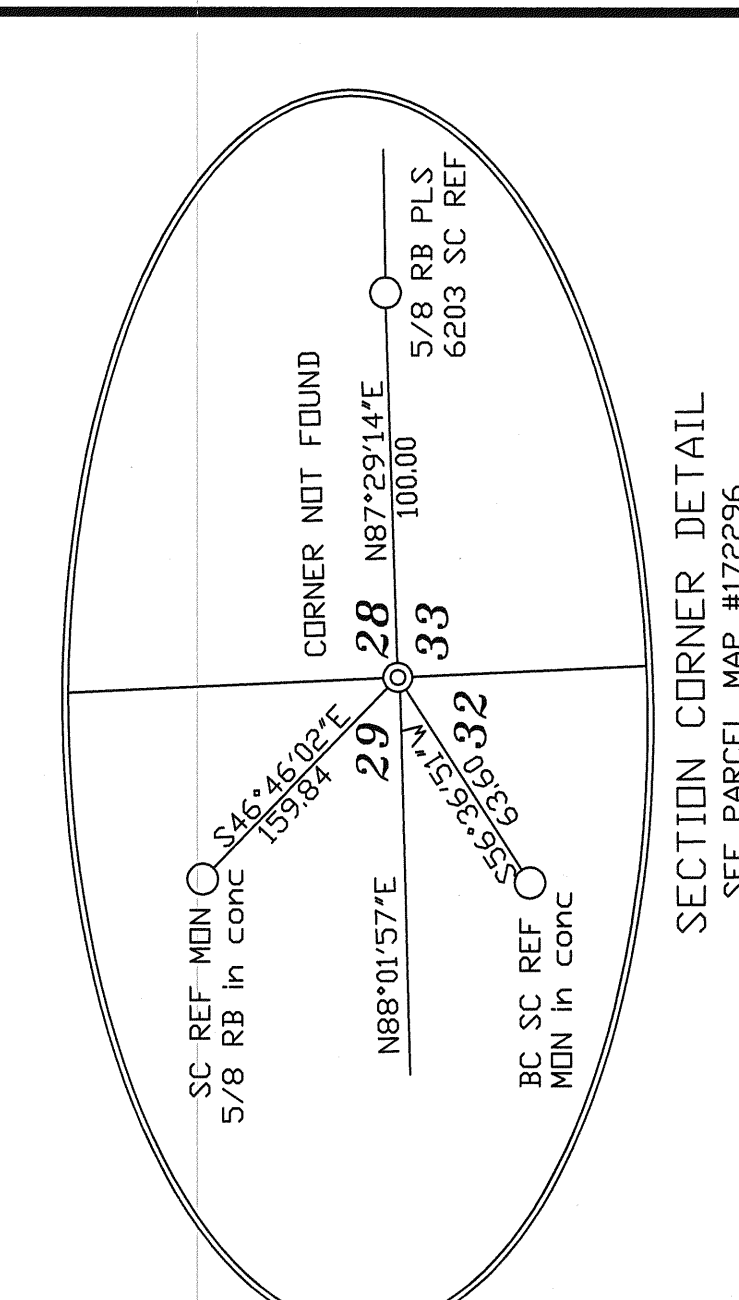
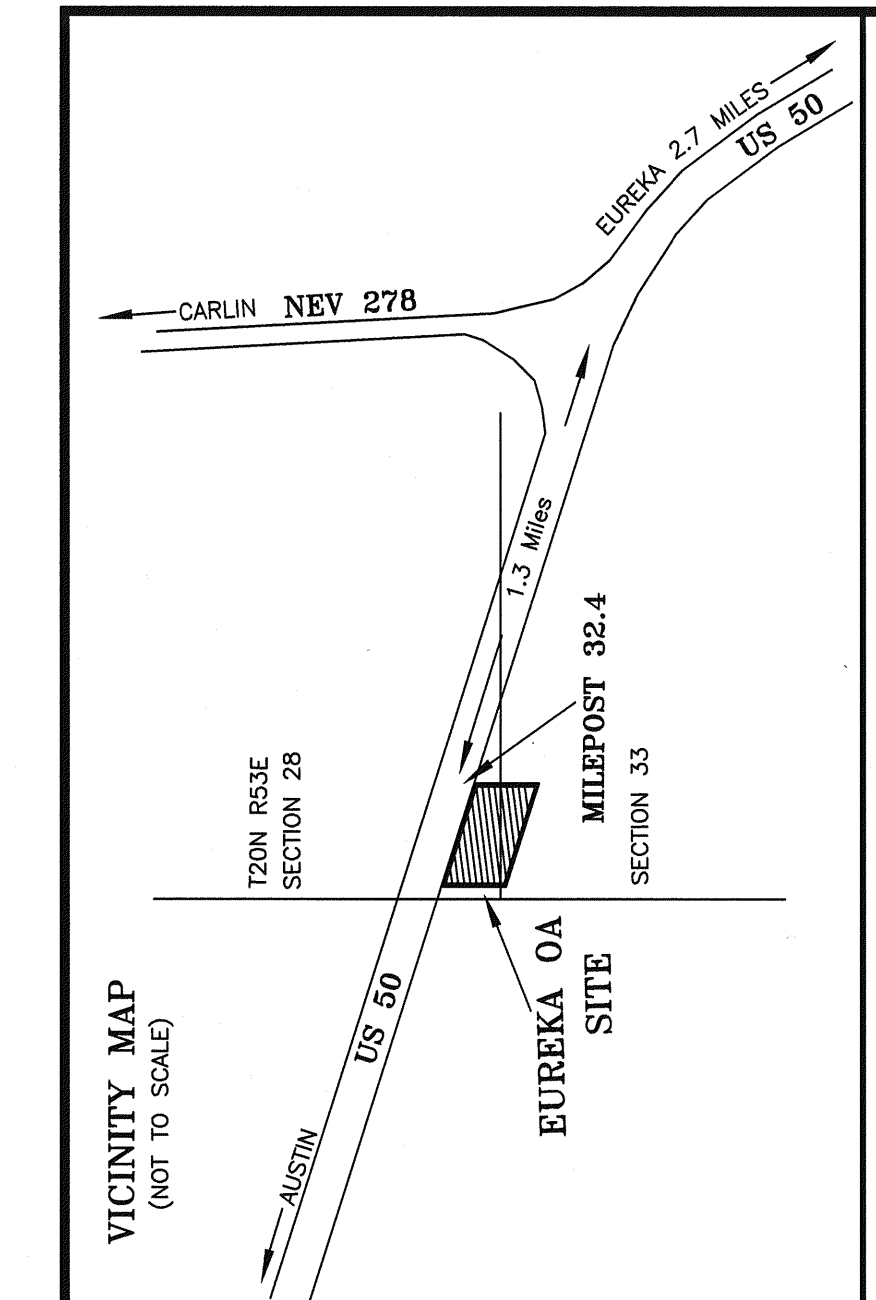
These positions are subject to minor changes (5') when the state wide network adjustment from Tl. Energy is completed.

**NOTE:**

This map does not represent a parcel map as defined in NRS 278.461, in that this will be a lease from the Bureau of Land Management. No additional parcels are being created.

**NOTE: Scaled-to-Ground Coordinates**

Adjusted coordinates are divided by COMBINED scale factor of 0.999647910000. Distances shown are horizontal ground distances.



TOTAL AREA SURVEYED: 131,318.0 SQUARE FEET 3.015 ACRES

JOB #S920-017 SHEET 1 OF 1

RECORD OF SURVEY AND TOPOGRAPHIC MAP OF EUREKA OPTICAL AMPLIFIER SITE FOR SIERRA PACIFIC COMMUNICATIONS WITHIN THE SW1/4 SW1/4 OF SECTION 28 AND THE NW1/4NW1/4 SECTION 33, T20N R53E M88&M EUREKA COUNTY, NEVADA

TI ENERGY SERVICES, INC.