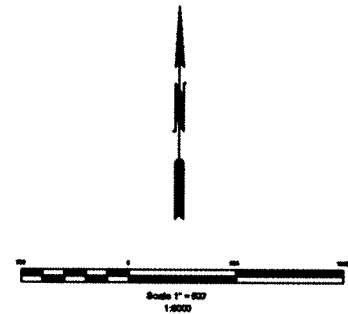
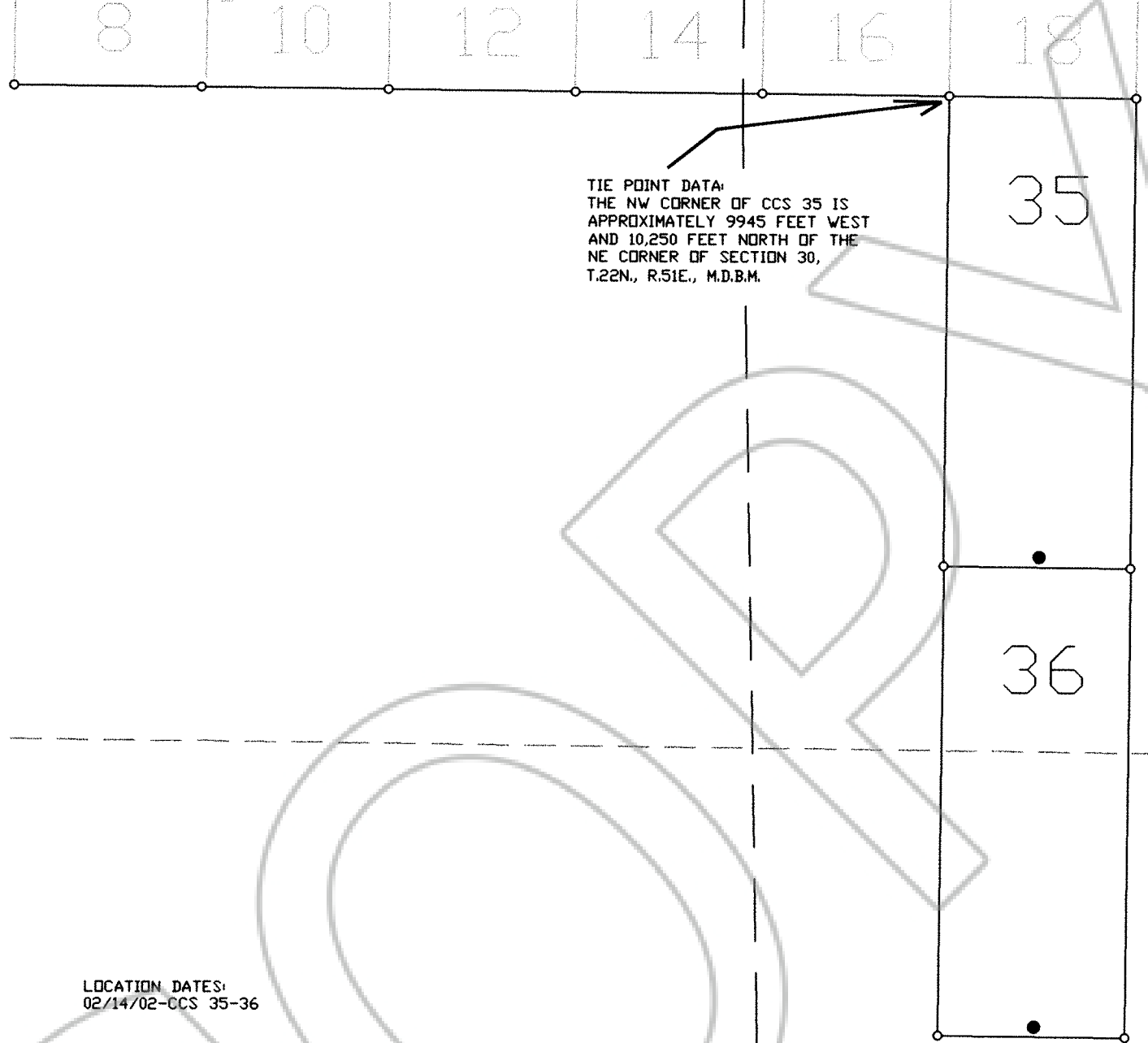


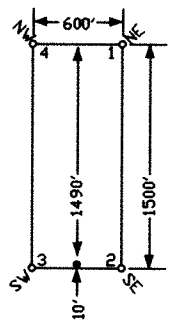
Existing CCS Claims



14

13

TYPICAL CLAIM



LOCATION DATES:
02/14/02-CCS 35-36

NOTES:
LOCATION MONUMENTS SET 10' FROM CLAIM END CENTERLINES. ALL
LOCATION MONUMENTS AND CLAIM POSTS ARE 2"x2"x4' WOODEN STAKES.
DASHED SECTION LINES INDICATE PROJECTED SECTIONS.

FILED AT THE REQUEST OF *KM Exploration Ltd*
on *May 14* 20 *02* . at *1:3* mins. past *8 A.M.*
RECORDS OF **EUREKA COUNTY, NEVADA** M. N. REBALEATI, Recorder
File No. **198100**
Fee \$ *34.07*

	KM Exploration Ltd. 310 Silver Street Elko, NV 89801 CCS Claims 35-36 T.22N., R.50E.; Eureka County, Nevada	
	310 SILVER STREET PH: (775) 778-0668 ELKO, NV 89801 FAX: (775) 778-0887	DATE: February 2002 TIME: 1:30 PM BY: MNR