

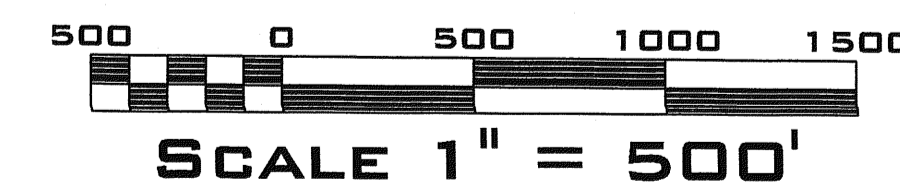
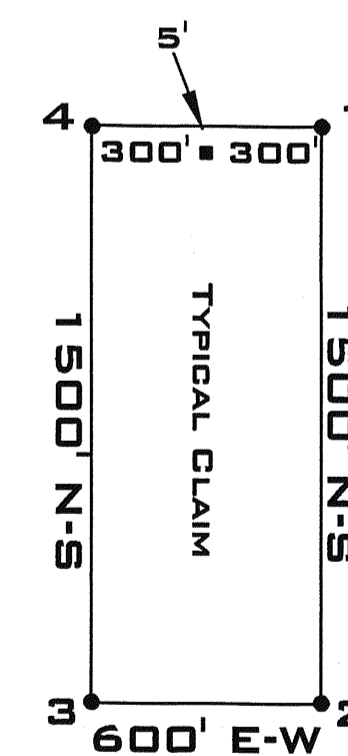
LOCATION:
 SECTIONS 27,28,33 AND 34
 T24N, R48E, MDM
 EUREKA COUNTY, NEVADA

TIE POINT:
 THE NE CORNER OF AU 11 IS S 11°55'15" E 4599.18' FROM THE
 NE CORNER OF SECTION 28.

LOCATION DATES:
 4/2/02 AU 1-12

NOTES:
 ALL CLAIMS ARE 1500' X 600'
 ALL MONUMENTS ARE 2" X 2" X 4' WOODEN POSTS WITH METAL TAGS.
 THE LOCATION MONUMENTS ARE TYPICALLY 5' FROM THE ENDLINES.

- LEGEND:**
- LOCATION MONUMENT
 - CLAIM CORNER
 - ✦ FOUND SECTION CORNER



FILED AT THE OFFICE OF Nevada Pacific Gold
 on 7/16/02
 178194

PROJECT	AU LODE MINING CLAIMS
Locator:	NEVADA PACIFIC GOLD (US), INC. A NEVADA CORPORATION P.O. BOX 548 ELKO, NEVADA, 89803