

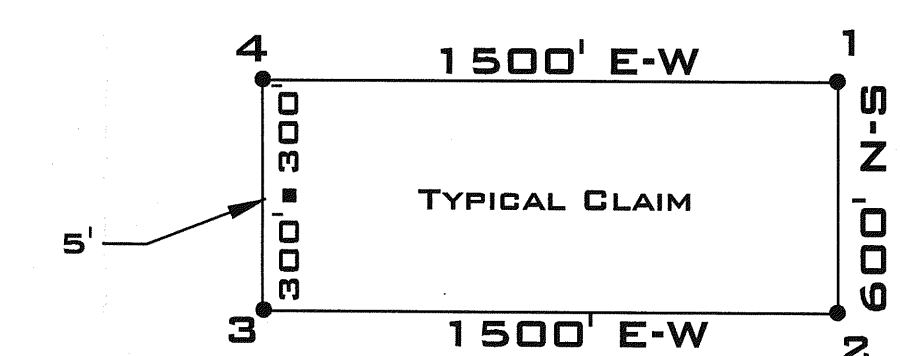
LOCATION:
SECTIONS 13, 14, 22, 23, AND 24
T24N, R48E, MDM
EUREKA COUNTY, NEVADA

TIE POINT:
THE SE CORNER OF SB 2 IS N 00°12' 00" W 3022.68' FROM THE 1/4
SECTION CORNER COMMON TO SECTIONS 23 AND 26.

LOCATION DATES:
4/2/02 SB 1, 2, 3, 5, AND 9-16

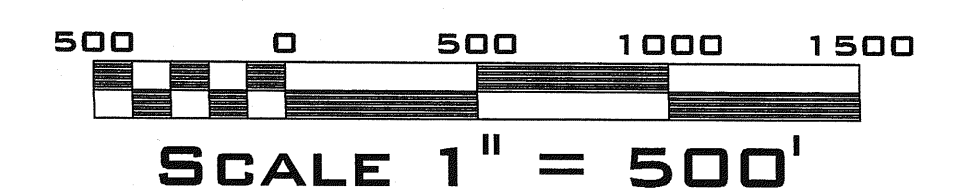
NOTES:

ALL CLAIMS ARE 1500' X 600'
ALL MONUMENTS ARE 2" X 2" X 4' WOODEN POSTS WITH METAL TAGS.
THE LOCATION MONUMENTS ARE TYPICALLY 5' FROM THE ENDLINES,
UNLESS OTHERWISE NOTED.



LEGEND:

- LOCATION MONUMENT
- CLAIM CORNER
- ◻◻◻ FOUND 1/4 SECTION CORNER



FILED AT THE REQUEST OF *Nevada Pacific Gold*
June 20, 2002 3:35 PM
RECORDS OF EUREKA COUNTY, NEVADA
FILE NO. 178207

PROJECT	SB LODE MINING CLAIMS
Locator:	NEVADA PACIFIC GOLD (US), INC. A NEVADA CORPORATION P.O. BOX 548 ELKO, NEVADA, 89803