

8

9

9

10

17

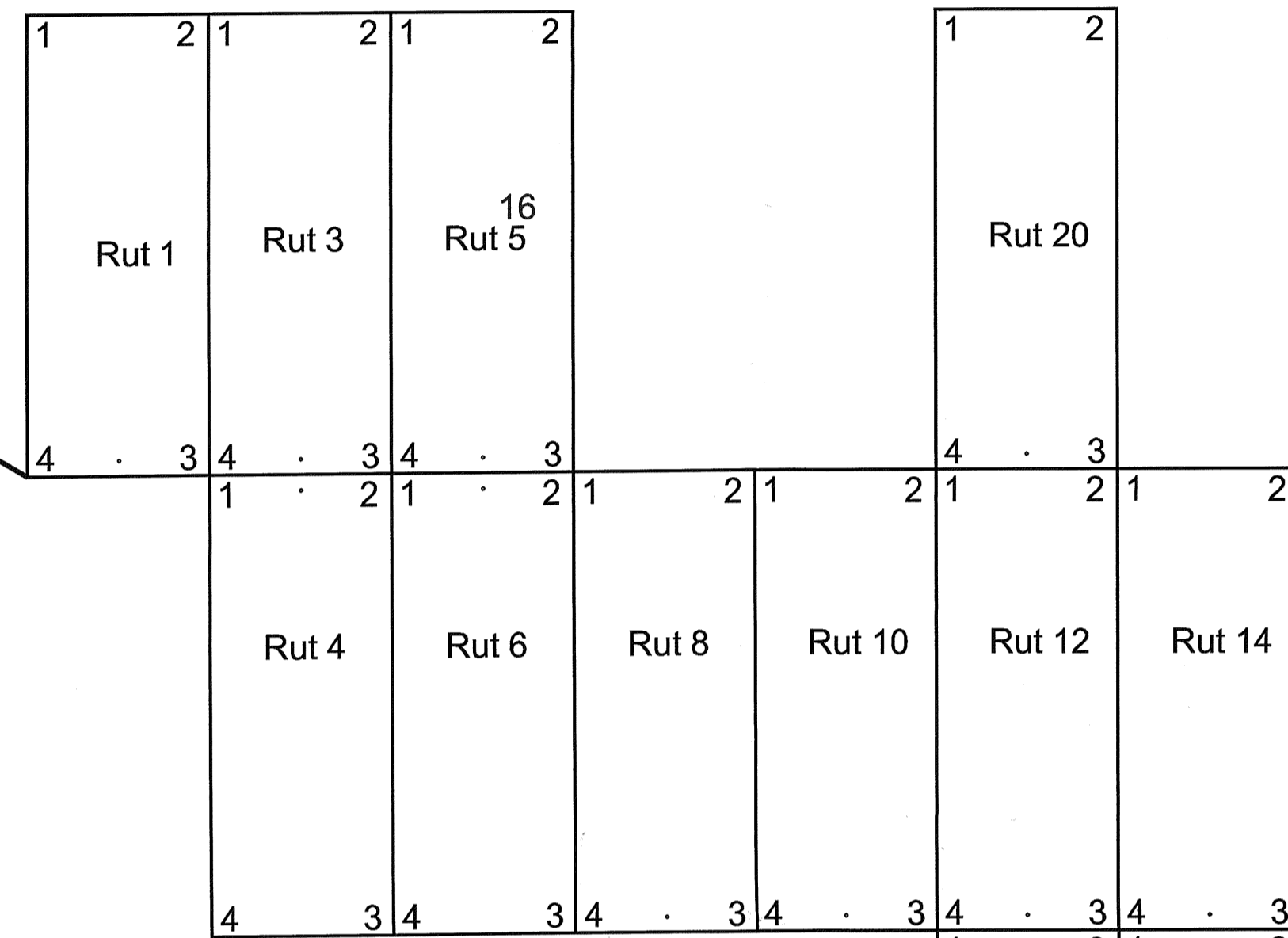
16

16

15

T22N R50E

From Hilltop 7173T in unsurveyed section 17 T22N
R50E the SW Corner of Rut 1 is 1680' S59°40'10"E



15

14

17

16

21

20

Rut 11

Rut 13

Rut 15

21

22

23

From surveyed section corner 19/20/29/30 T22N
R51E the SE Corner of Rut 15 is 21,105' N78°56'W

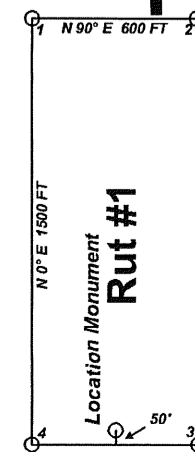
"Rut" lode claims 1, 3-6, were located on May 22, 2002
"Rut" lode claims 8, 10-12, were located on May 24, 2002
"Rut" lode claims 13 and 14 were located on June 5, 2002
"Rut" lode claims 15 and 20 were located on June 6, 2002

Owner/Locator:
Arc Geoscience, L.L.C.
Agent: David C. Flint
955 West Moana Lane
Reno Nv.
89509

In Sections 15, 16, 21 and 22
Township 22 North
Range 50 East

M.D.B. & M.
Unknown Mining District
Eureka County, Nevada

Notes:
Location Monuments are set as
shown from claim end lines
except where noted otherwise.
All location and corner
monuments are 2" X 2" X 4"
wooden posts.

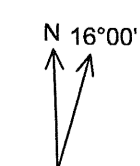


Typical Claim
Bearing and Distance

Tie Point Data:
From surveyed section common corner 19/20/29/30 T22N,
R51E the SE Corner of Rut 15 is 21,105' N78°56'W.
Other ties as noted.

FILED AT THE REQUEST OF Arc Geoscience LLC
on 25 June 02, at 4 mins. past 8 A. M.
RECORDS OF EUREKA COUNTY, NEVADA M. N. REBALEATI, Recorder
File No. 178228 Fee \$ 149.00

Coordinates and bearings are based
on UTM coordinates, NAD 27, UTM
Zone 11.
Scale 1:6000
1" = 500'
0 500' 1000'
FEET



MINING CLAIM LOCATION MAP
RUT Lode Mining Claims

Arc Geoscience, L.L.C.
Reno, Nevada

Rut_Claim_Map.dwg
June 21, 2002
Drawn By: Greg Elkins