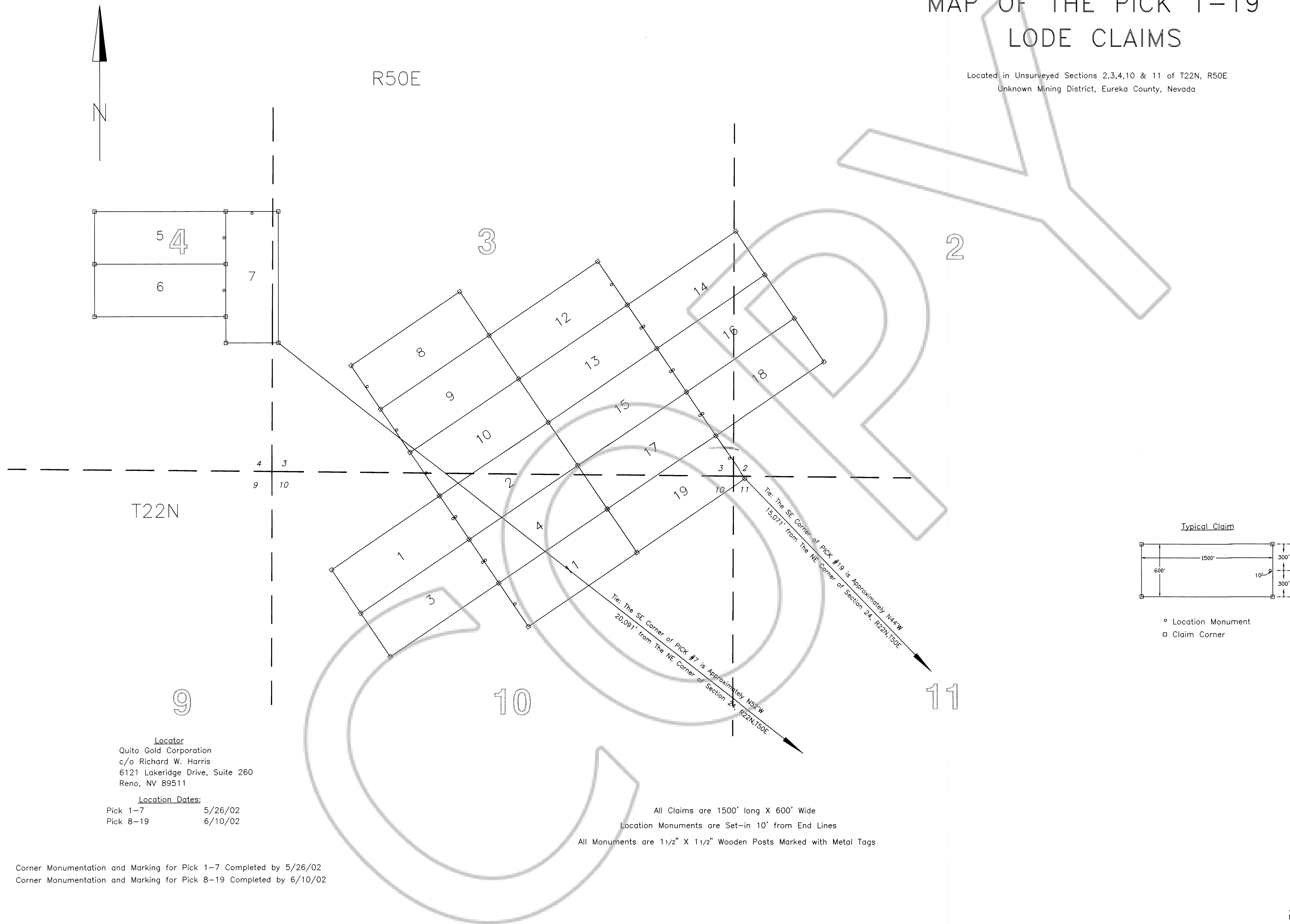
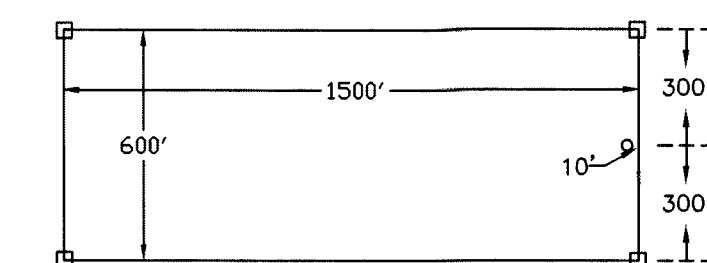


# MAP OF THE PICK 1-19 LODE CLAIMS

Located in Unsurveyed Sections 2,3,4,10 & 11 of T22N, R50E  
Unknown Mining District, Eureka County, Nevada



Typical Claim



- Location Monument
- Claim Corner

Locator  
Quito Gold Corporation  
c/o Richard W. Harris  
6121 Lakeridge Drive, Suite 260  
Reno, NV 89511

Location Dates:  
Pick 1-7 5/26/02  
Pick 8-19 6/10/02

All Claims are 1500' long X 600' Wide  
Location Monuments are Set-in 10' from End Lines  
All Monuments are 1 1/2" X 1 1/2" Wooden Posts Marked with Metal Tags

Corner Monumentation and Marking for Pick 1-7 Completed by 5/26/02  
Corner Monumentation and Marking for Pick 8-19 Completed by 6/10/02