

MAP OF THE OLUM 161 - 176 LODE CLAIMS

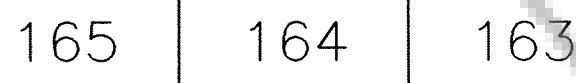
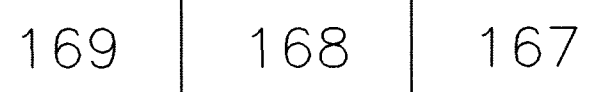
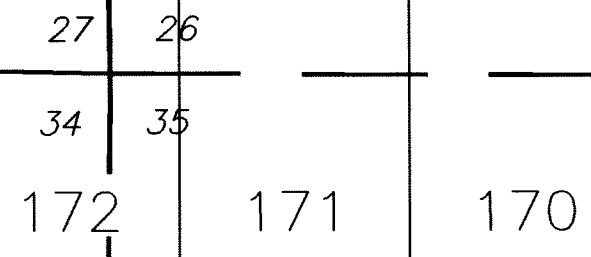
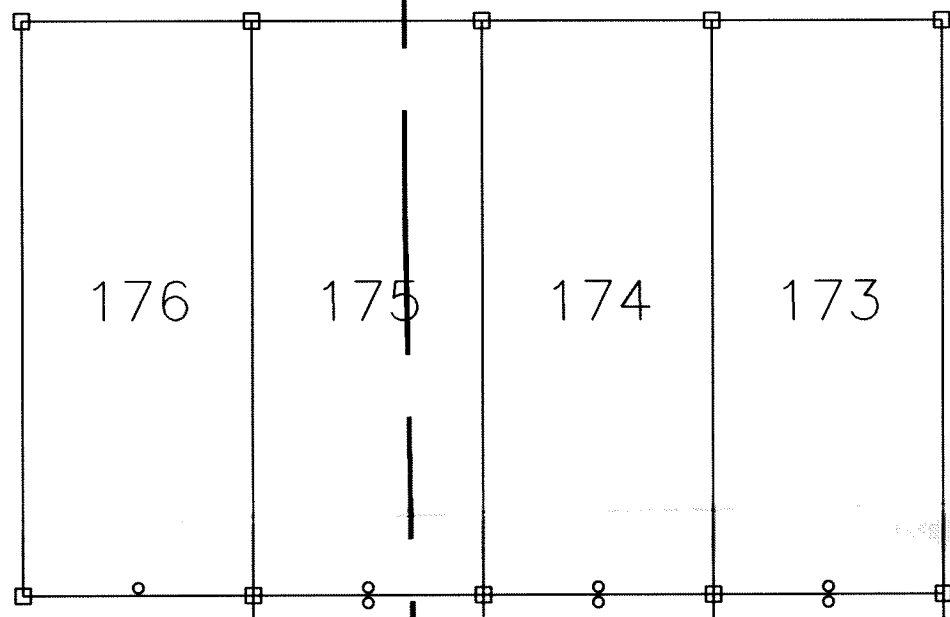
Located in Sections 26, 27, 34 & 35 of T22N, R49E

And Section 3 of T21N, R49E

Unknown Mining District, Eureka County, Nevada

27

26



Tie: The SW Corner of OLUM 165 is Approximately
S79.5°E 2,005' from the NW Corner of Section 2, T21N, R49E

T22N

T21N

34

35

36

3

2

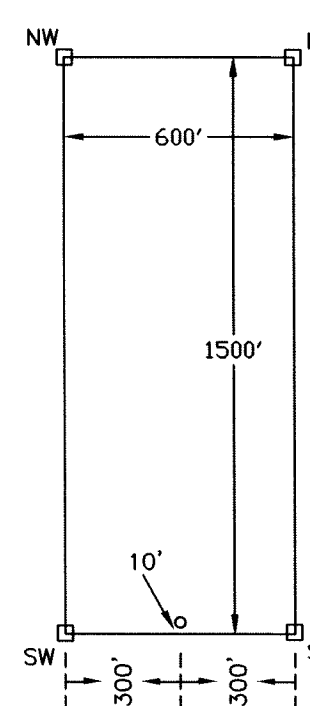
1

Locator
White Knight Gold (U.S.), Inc.
4790 Caughlin Parkway #137
Reno, NV 89509-0907

Location Date:
OLUM 161-176 4/25/02

Corner Monumentation and Marking Completed by 4/25/02

Typical Claim



○ Location Monument
□ Claim Corner

All Claims are 1500' long X 600' Wide

Location Monuments are Set-in 10' from End Lines

All Monuments are 1 1/2" X 1 1/2" Wooden Posts Marked with Metal Tags

FILED AT THE REQUEST OF White Knight Gold
on July 19 02 at 11 min. page 33
RECORDS OF EUREKA COUNTY, NEVADA M. N. REBALENTI, Recorder
File No. 1-93388 Fee \$ 244.00

