

AMENDED  
MAP OF THE OLIVER GROUP  
OF LODE CLAIMS

Located in Unsurveyed Sections 1, 2, 11 & 12 of T22N, R50E  
Unknown Mining District, Eureka County, Nevada



2

1

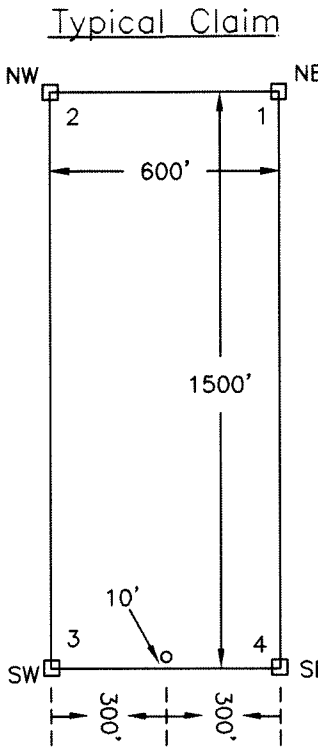
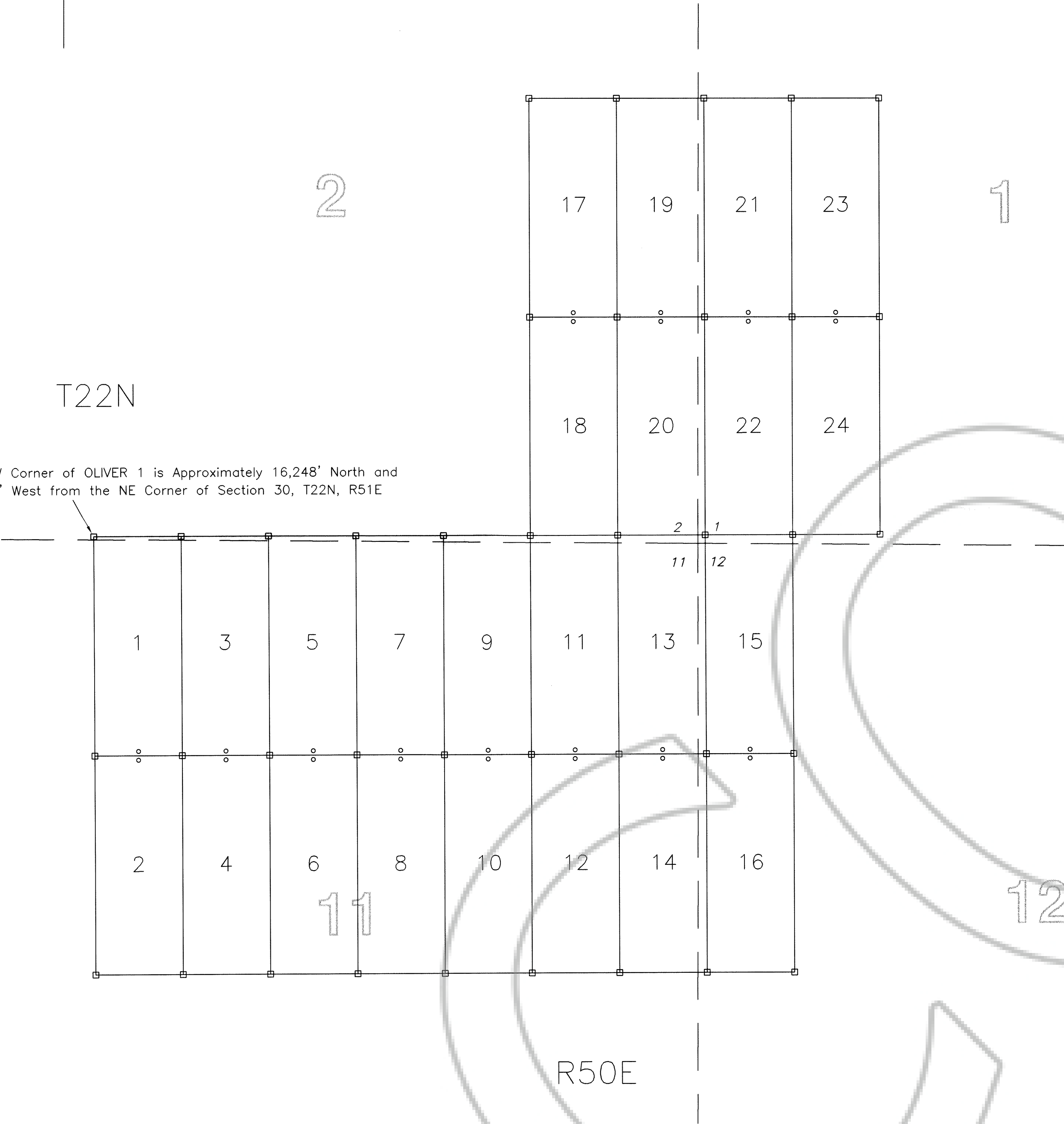
Locator  
White Knight Gold (U.S.), Inc.  
4790 Caughlin Parkway #137  
Reno, NV 89509-0907

Location Date:  
OLIVER 1 - 24 10/5/01

Corner Monumentation and Marking Completed by 10/28/01

T22N

Tie: The NW Corner of OLIVER 1 is Approximately 16,248' North and  
14,667' West from the NE Corner of Section 30, T22N, R51E



• Location Monument

All Claims are 1500' long X 600' Wide  
Location Monuments are Set-in 10' from End Lines  
All Monuments are 1 1/2" X 1 1/2" Wooden Posts Marked with Metal Tags