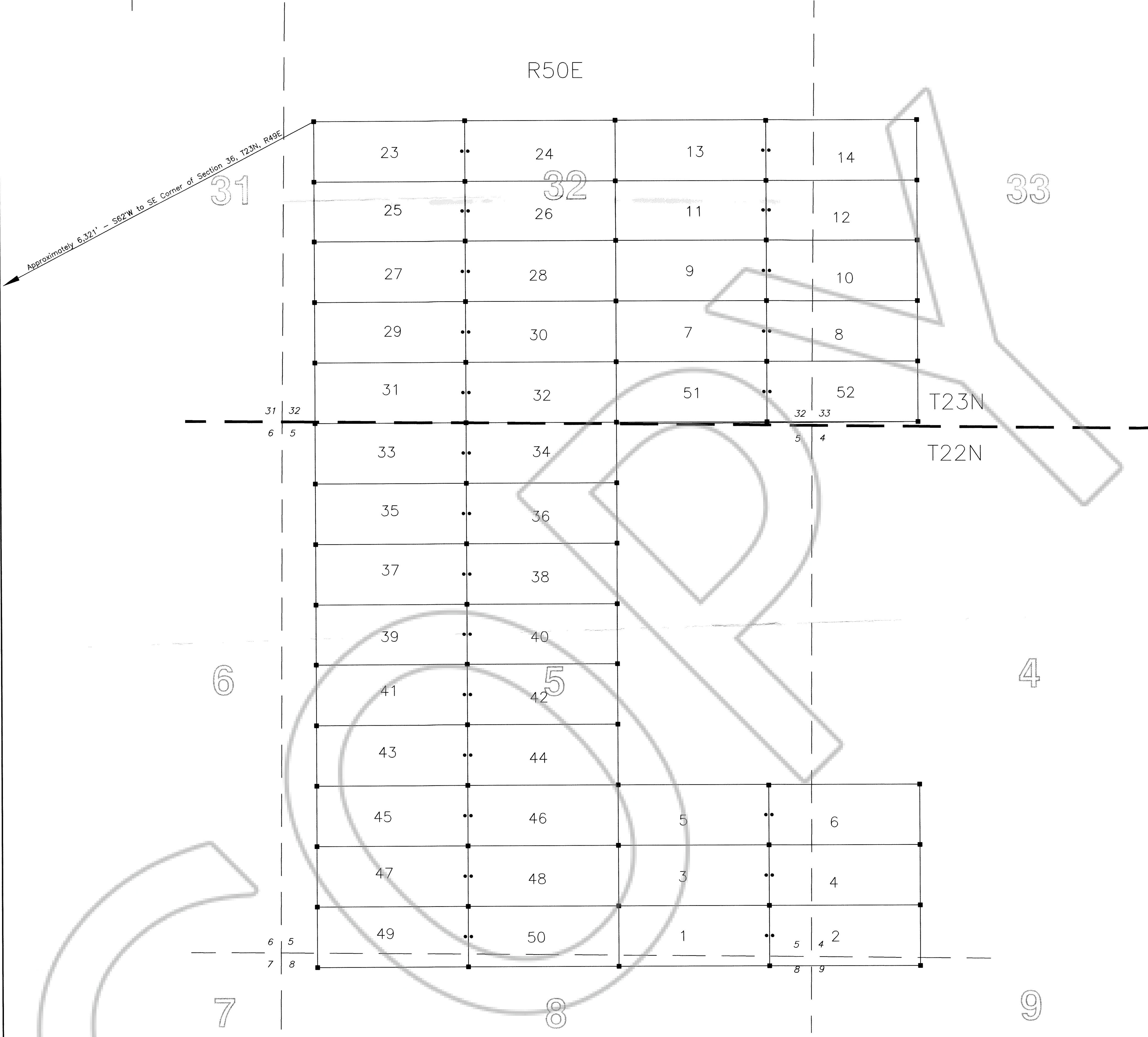


AMENDED MAP OF THE GIN GROUP OF LODE CLAIMS

Located in Unsurveyed Sections 32 & 33 of T23N, R50E
&
Unsurveyed Sections 4, 5, 8 & 9 of T22N, R50E - MDB&M
Unknown Mining District, Eureka County, Nevada

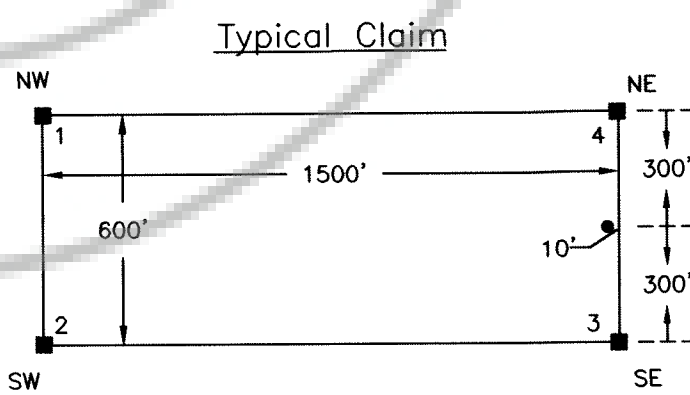


Approximately 6,321' - S62°W to SE Corner of Section 36, T23N, R49E

Locator
White Knight Gold (U.S.), Inc.
4790 Coughlin Parkway #137
Reno, NV 89509-0907

Location Dates:	
GIN 29-42	9/26/01
GIN 1-14, 23-28	10/4/01
GIN 43-50	10/27/01
GIN 51-52	10/28/01

Corner Monumentation and Marking Completed by 10/28/01



• Location Monument

All Claims are 1500' long X 600' Wide
Location Monuments are Set-in 10' from End Lines
All Monuments are 1 1/2" X 1 1/2" Wooden Posts Marked with Metal Tags

Tie: The NW Corner of GIN 23 is Approximately 6,321' at a Bearing of N62°E from the SE Corner of Section 36, T23N, R49E

