

DRAWING NUMBER

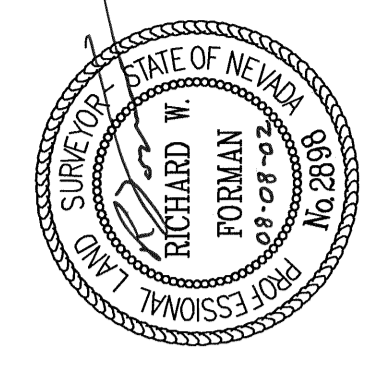
DRAWING NUMBER

DRAWING NUMBER
178479

DRAWING NUMBER
R85
T18 N R49 E
Luther K. Wise
See 35, 30

SURVEYOR'S CERTIFICATE

I, Richard W. Forman, a Professional Land Surveyor registered in the State of Nevada, certify that:
 1. This plat represents the results of a survey conducted under my supervision at the instance of Luther K. Wise.
 2. The lands surveyed lie within Section 25, T.18 N., R.49 E. and Section 30, T.18 N. R.50 E., Eureka County, Nevada and the survey was completed on the 4th day of August, 2002.
 3. This plat, like with applicable statutes of this state and any local ordinances in effect on the date the survey was completed, and the survey was conducted in accordance with Chapter 625 of the Nevada Administrative Code.
 4. The monuments depicted on the plat are of the character shown, occupy the positions indicated, and are of sufficient durability.
 Date August 8, 2002
 Richard W. Forman, P.E., P.L.S.
 Nevada No. 2898



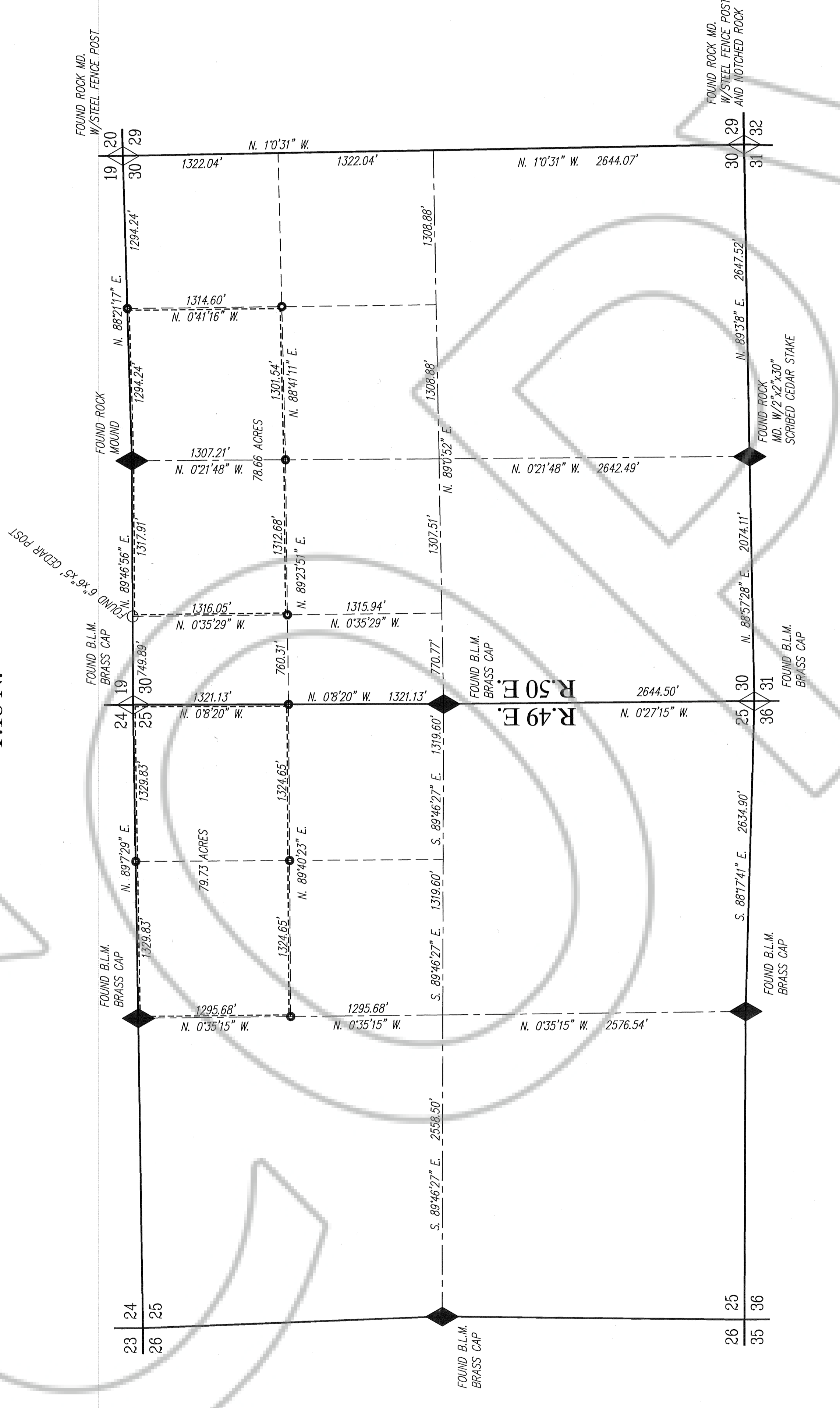
JOB #0201004S

BFI
 BOUNDY & FORMAN, INC.
 CIVIL ENGINEERS, LAND & WATER RIGHT SURVEYORS
 ELY, NEVADA
 AUGUST, 2002

RECORD OF SURVEY
 SHOWING
 SECTION 25, T.18 N. R.49 E. AND
 SECTION 30, T.18 N. R.50 E., M.D.B. & M.
 FOR
 LUTHER K. WISE
 EUREKA COUNTY, NEVADA

FILED AT THE REQUEST OF
Luther K. Wise
 Aug 13, 2002
 AT 3 MIN PAST 11 AM
 0'CLOCK
 FILES OF EUREKA
 COUNTY, NEVADA
 M.D. Rebeleati
 Recorder
 Hanser Stewart
 Deputy
 File No. 178479

T.18 N.



● = SET STEEL FENCE POST WITH P.L.S. TAG #2888

TRUE
 BASIS OF BEARING
 GPS ± 2cm
 AT V. 1/4 COR. SEC. 30