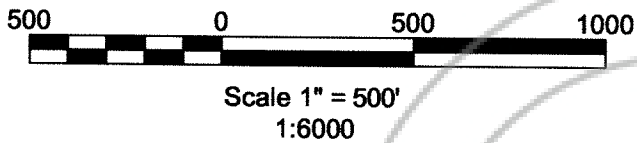
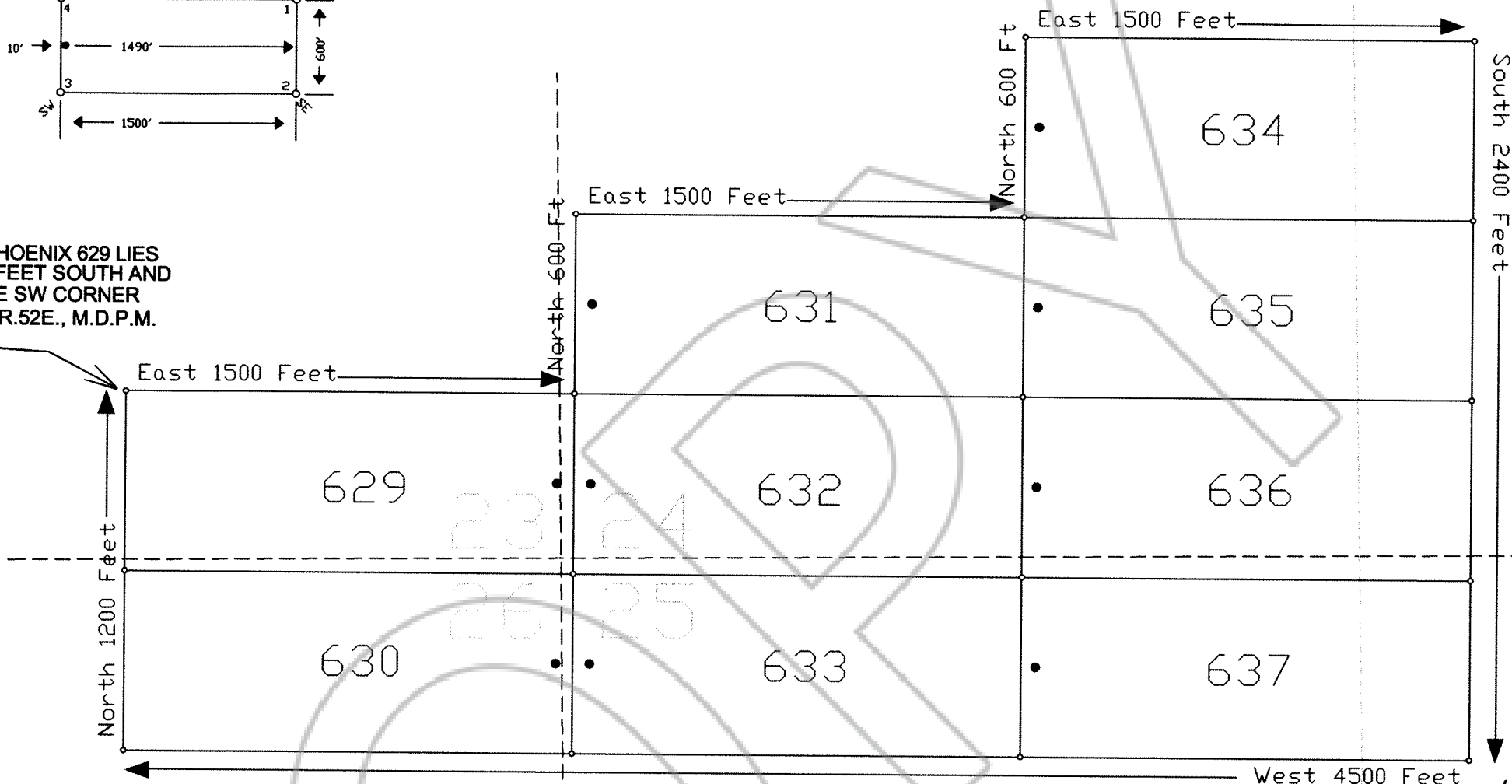


TIE POINT DATA:
 THE NW CORNER OF PHOENIX 629 LIES
 APPROXIMATELY 4723 FEET SOUTH AND
 3904 FEET EAST OF THE SW CORNER
 OF SECTION 14, T.26N., R.52E., M.D.P.M.

LOCATION DATES:
 06/02/02 - Phoenix 629-637



NOTES:
 LOCATION MONUMENTS SET 10' FROM CLAIM END
 CENTERLINES. ALL LOCATION MONUMENTS AND
 CLAIM POSTS ARE 2"X2"X4' WOODEN STAKES.
 DASHED SECTION LINES INDICATE PROJECTED SECTIONS.

FILED AT THE REQUEST OF Golden Gryphon
 on Aug 28 20 02, at 15 mins. past 11 a.m.
 RECORDS of EUREKA COUNTY, NEVADA M. N. REBALEATI, Recorder
 File No. 178539 Fee \$ 139.00

	Golden Gryphon USA Inc. 1400 Tanager Place RR21, Roberts Creek, BC V0N 2W1 Phoenix Claims 629-637 T.26N.,R.52E.; Eureka County, Nevada	
	310 SILVER STREET PH: (775) 778-0668 ELKO, NV 89801 FAX: (775) 778-0687	DATE: August 2002

