

128873

Homestake Mining Company of California
c/o Barrick Management Corp.
136 E. South Temple, Suite 1050
Salt Lake City, Utah 84111

Lode Claims LH 137R, LH 138R
Eureka County, Nevada
Section 28 & 29, T20N, R53E, MDB&M

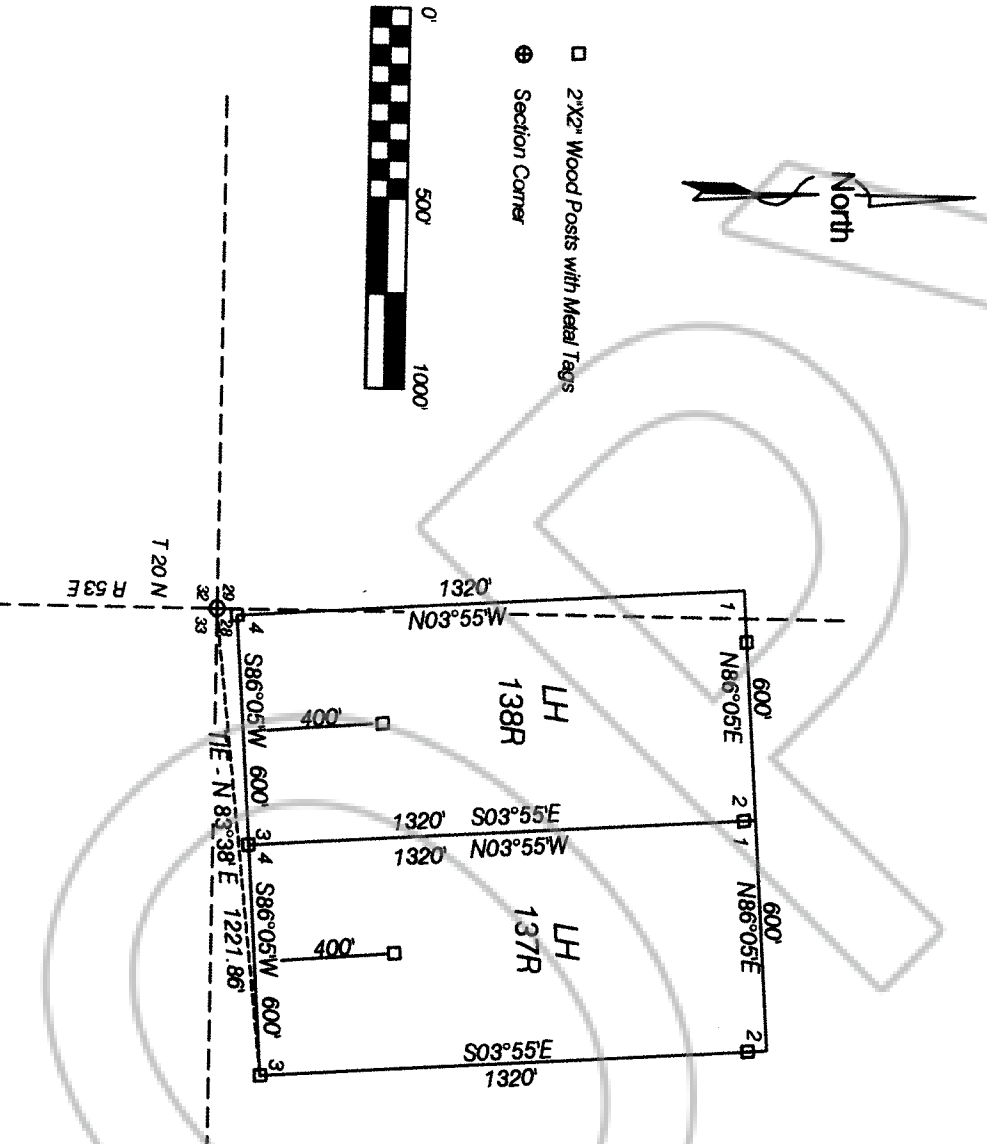
Location Date: September 1, 2002

All claim monuments are 2" x 2" wood posts with metal tags.

The monument for the NW Corner of LH 138R is a witness post located 125', N86°05E of the true location.

The monument for the NE Corner of LH 138R and the NW Corner of LH 137R is a witness post located 30', S03°55E of the true location.

The monument for the NE Corner of LH 137R is a witness post located 50', S03°55'E of the true location.



Tie: SE Corner of LH 137R is located 1221.86', N83°38'E from the SE Corner of Section 28, Township 20 North, Range 53 East, MDB&M, Eureka County, Nevada.

Prepared By: Homestake Mining Company of California
c/o Barrick Management Corp.
136 E. South Temple, Suite 1050
Salt Lake City, Utah 84111
(801) 297-4724

FILED AT THE REQUEST OF Homestate Bank
on Oct 8 20 12 at 26 mins. past 3 P M
RECORDS OF EUREKA COUNTY, NEVADA M. N. REBELENT, Recorder
File No. 128873 Fee \$ 34.00