

3

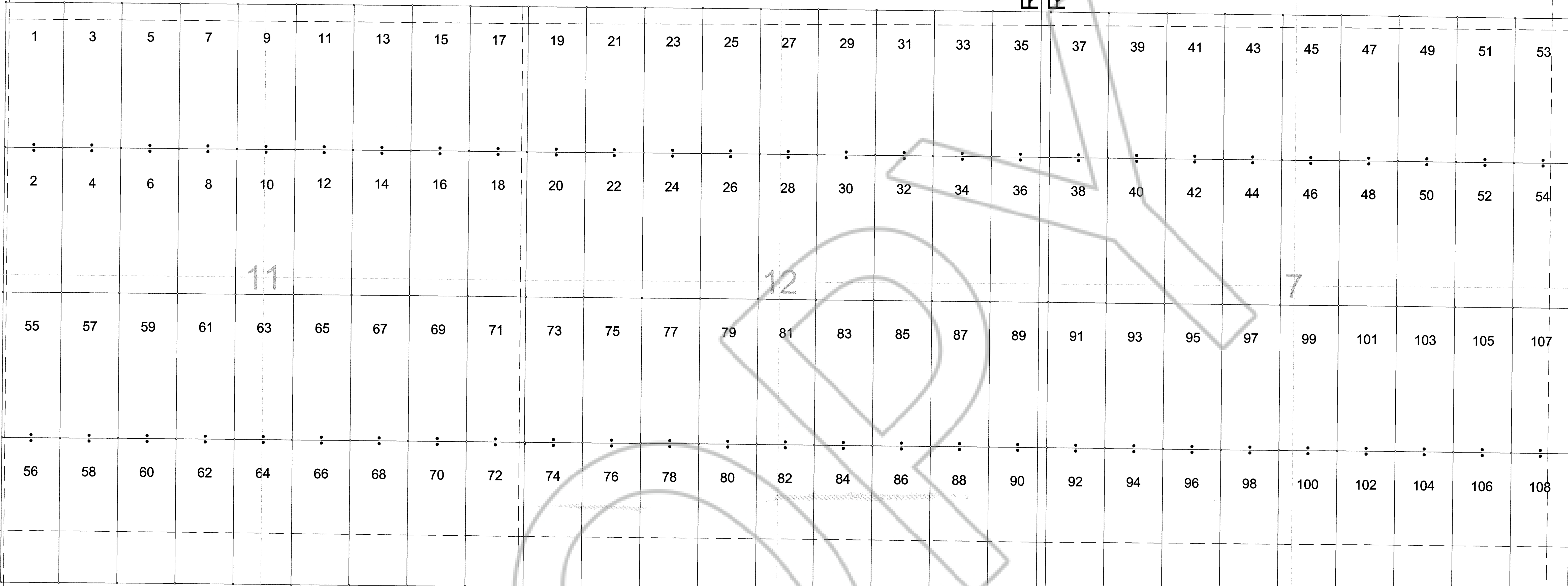
2

1

R.49E.
R.50E.

6

5



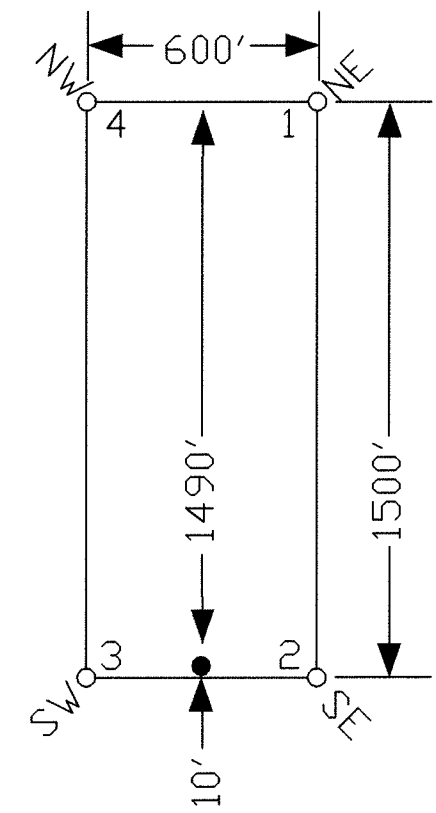
10

8

15

17

TYPICAL CLAIM



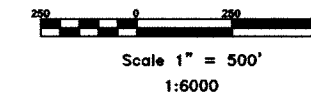
TIE POINT DATA:
 THE SOUTHWEST CORNER OF BOC 109
 LIES APPROXIMATELY 5,925 FEET WEST
 AND 1,973 FEET SOUTH OF THE SOUTHWEST
 CORNER OF SECTION 7, T.26N., R.50E., M.D.B.M.

NOTES:
 LOCATION MONUMENTS SET 10' FROM CLAIM
 END CENTERLINES. ALL LOCATION MONUMENTS
 AND CLAIM POSTS ARE 2"x2"x4' WOODEN STAKES.
 DASHED SECTION LINES INDICATE PROJECTED SECTIONS.

BOC Claims continued on Sheet 2

LOCATION DATES:

- 09/26/02 - BOC 1-54
- 09/27/02 - BOC 55-108
- 09/28/02 - BOC 109,111,113,115,
117,119,121,123,125,
127,129,131,133,135
137,139,141,143,145



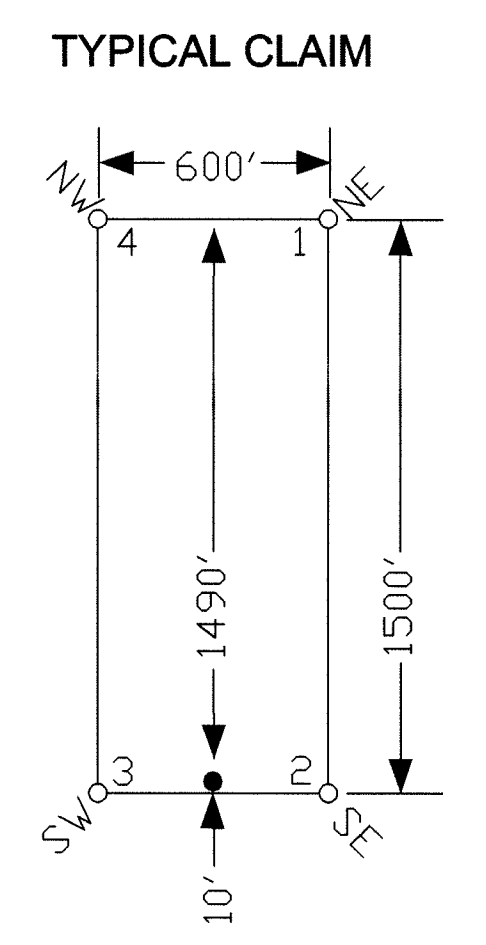
FILED AT THE REQUEST OF *Placer Dome*
 on *Nov 6* 20*02*, at *3:32* mins. past *1 P.* M.
 RECORDS OF EUREKA COUNTY, NEVADA M. N. REBALEATI, Registrar
 File No. **179380** Fee \$ *262.30*

	Placer Dome U.S. Inc. HC 66 Box 1250, Crescent Valley, NV 89821-1250 BOC 1-241 Lode Claims T.26N., R.49&50E.; Eureka County, Nevada	
	DATE: October 2002 PH: (775) 778-0668 ELKO, NV 89801 FAX: (775) 778-0687	ASAD FILE NAME: BOC_1.dwg PLOT SCALE: 1"=500' DRAWN BY: ems

BOC Claims continued on Sheet 1

TIE POINT DATA:
THE NORTHEAST CORNER OF BOC 146 LIES APPROXIMATELY
5,482 FEET EAST AND 2,095 FEET SOUTH OF THE SOUTHWEST
CORNER OF SECTION 7, T.26N., R.50E., M.D.B.M.

NOTES:
LOCATION MONUMENTS SET 10' FROM CLAIM END
CENTERLINES, UNLESS OTHERWISE NOTED ON MAP.
ALL LOCATION MONUMENTS AND CLAIM POSTS ARE 2"x2"x4'
WOODEN STAKES.
DASHED SECTION LINES INDICATE PROJECTED SECTIONS.



LOCATION DATES:
09/28/02 - BOC 110,112,114,116,118,120,122,124,126,128,
130,132,134,136,138,140,142,144,146-184
09/29/02 - BOC 185-214
10/02/02 - BOC 215-241

14

17

23

20

26

25

30

29

R.49E.
R.50E.

FILED AT THE REQUEST OF Placer Dome
on Nov 6 2002, at 3.2 mins. past 1 P.M.
RECORDS OF EUREKA COUNTY, NEVADA M. N. REBALEATI, Recorder
File No. 129380 Fee \$ 3623.00

	Placer Dome U.S. Inc. HC 66 Box 1250, Crescent Valley, NV 89821-1250 BOC 1-241 Lode Claims T.26N., R.49&50E.; Eureka County, Nevada	
	DATE: October 2002 ACAD FILE NAME: boc-2.dwg PLOT SCALE: 1"=500'	DRAWN BY: bms SHEET 2 OF 2