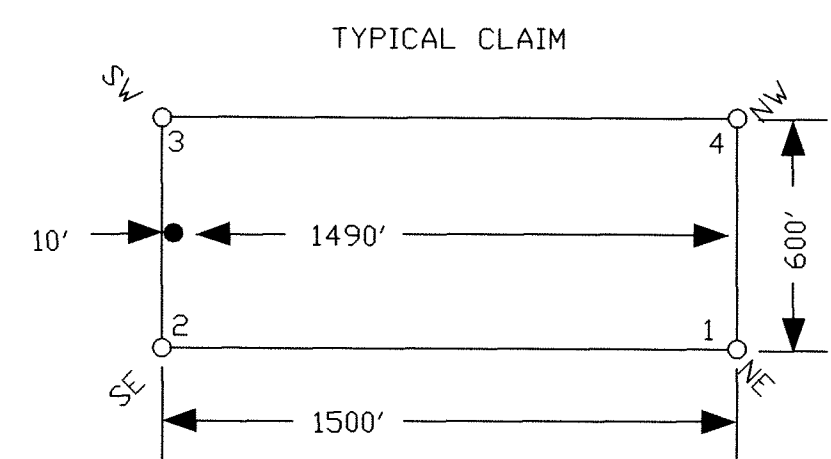


TIE POINT DATA:
 THE NORTHWEST CORNER OF NK 1 LIES APPROXIMATELY
 2,701 FEET EAST AND 3,929 FEET NORTH OF THE NORTHWEST
 CORNER OF SECTION 3, T.21N.,R.50E., M.D.B.M.

EXISTING NK CLAIMS

TIE POINT DATA:
 THE NORTHEAST CORNER OF NK 53 LIES APPROXIMATELY
 8,037 FEET EAST AND 905 FEET SOUTH OF THE NORTHWEST
 CORNER OF SECTION 3, T.21N.,R.50E., M.D.B.M.

LOCATION DATES:
 09/06/02 - NK 41-54
 09/17/02 - NK 21-27,55
 09/18/02 - NK 1,2,4



NOTES:
 LOCATION MONUMENTS SET 10' FROM CLAIM END
 CENTERLINES. ALL LOCATION MONUMENTS AND
 AND CLAIM POSTS ARE 2"x2"x4' WOODEN STAKES.
 DASHED SECTION LINES INDICATE PROJECTED SECTIONS.

FILED AT THE REQUEST OF Nevada Gold Ventures
 on 10/14/02 at 2:00 p.m. per L.P.M.
 RECORDS OF EUREKA COUNTY, NEVADA M. H. REBALEATI, Recorder
 File No. 179438 Fee \$ 374.00



310 SILVER STREET
 PH: (775) 778-0668 ELKO, NV 89801 FAX: (775) 778-0687

Nevada Gold Ventures
 310 Silver Street, Elko, NV 89801
 NK Lode Claims
 T.21,22N., R.50E.; Eureka County, Nevada

DATE: November 2002
 ACAD FILE NAME: nk2_claims.dwg
 PLOT SCALE: 1" = 500'
 DRAWN BY: rms