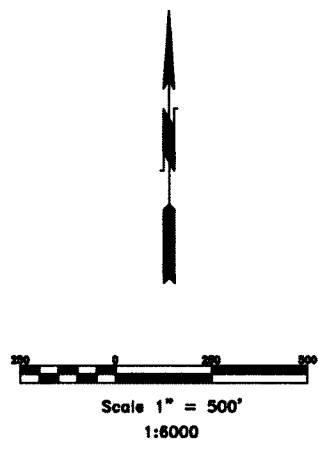
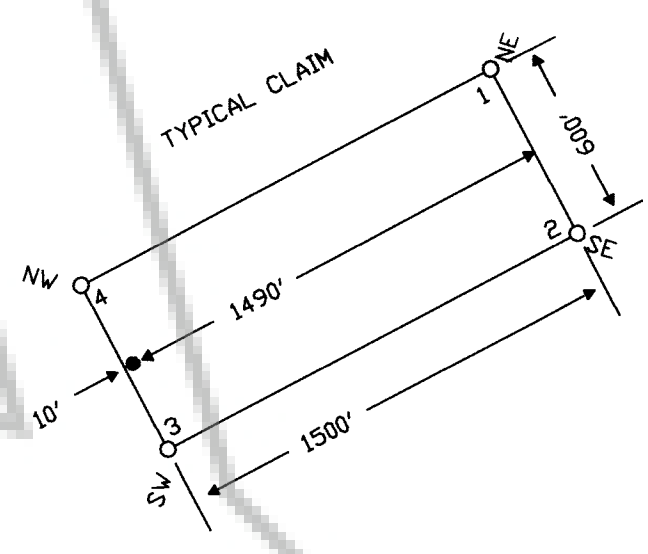


TIE POINT DATA:
THE NORTHWEST CORNER OF HC 26 IS APPROXIMATELY
2,090 FEET SOUTH AND 10,277 FEET WEST OF THE NORTHEAST
CORNER OF SECTION 30, T.27N., R.50E., M.D.B.M.



EXISTING HC CLAIMS

EXISTING HC CLAIMS



25

36

31

1

6

7

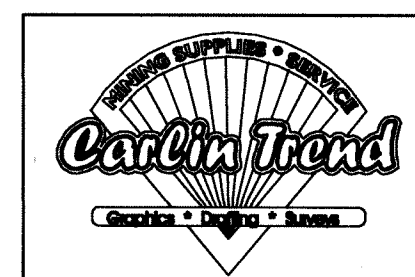
LOCATION DATES:
HC-26 TO HC-43 OCT. 13, 2002
HC-44 TO HC-50 NOV. 18, 2002
HC-21 TO HC-25 NOV. 18, 2002

NOTES:
LOCATION MONUMENTS SET 10' FROM CLAIM END
CENTERLINES, UNLESS OTHERWISE NOTED ON MAP.
ALL LOCATION MONUMENTS AND CLAIM POSTS ARE 2"x2"x4'
WOODEN STAKES.

DASHED SECTION LINES INDICATE PROJECTED SECTIONS.

R.49E. R.50E.

FILED AT THE REQUEST OF *Golden Trend Resources*
on *10-18-02* at *48* mins. past *3:00* P.M.
RECORDS OF EUREKA COUNTY, NEVADA M. N. REBALEATI, Recorder
179484



Golden Trend Resources Inc.
PO Box 40817, Reno, NV 89504
HC Claims 21-50
T.26&27N., R.49&50E.; Eureka County, Nevada

310 SILVER STREET
PH: (775) 778-0668 ELKO, NV 89801 FAX: (775) 778-0687

ACAD FILE NAME
HC2-claims.dwg
PLOT SCALE
1"=500'

DRAWN BY
BMS