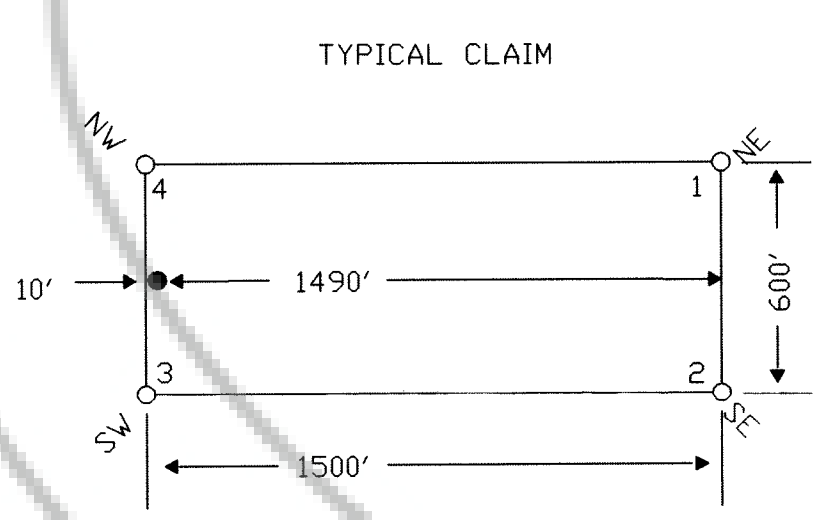
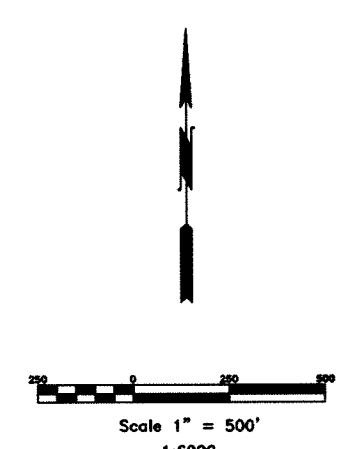


TIE POINT DATA:  
 THE SOUTHWEST CORNER OF CO 23 LIES APPROXIMATELY  
 4,675 FEET EAST AND 662 FEET NORTH OF THE SOUTHEAST  
 CORNER OF SECTION 13, T.25N., R.49E., M.D.B.M.



LOCATION DATES:  
 08/30/02 - CO 23 - CO 29  
 CP 23 - CP 29, CP 29A, CP 30  
 CQ 23 - CQ 29, CQ 29A, CQ 30  
 10/08/02 - CO 30

NOTES:  
 LOCATION MONUMENTS SET 10' FROM CLAIM END  
 CENTERLINES. ALL LOCATION MONUMENTS AND CLAIM  
 POSTS ARE 2"x2"x4" WOODEN STAKES  
 DASHED SECTION LINES INDICATE PROJECTED SECTIONS.



FILED AT THE REQUEST OF Idaho Resources  
 on Nov 26 2002, at 7 mins. past 2 P.M.  
 RECORDS OF EUREKA COUNTY, NEVADA M. N. REBALEATI, Recorder  
 File No. 179882 Fee \$ 394.00

	Idaho Resources Corporation P.O. Box 2183, Grand Junction, CO 81502 CO, CP, CQ LODE CLAIMS T.25N., R.50E.; Eureka County, Nevada	
	310 SILVER STREET PH: (775) 778-0668 ELKO, NV 89801 FAX: (775) 778-0687	DATE: November 2002 CLIENT: Idaho Resources PLOT SCALE: 1"=500'