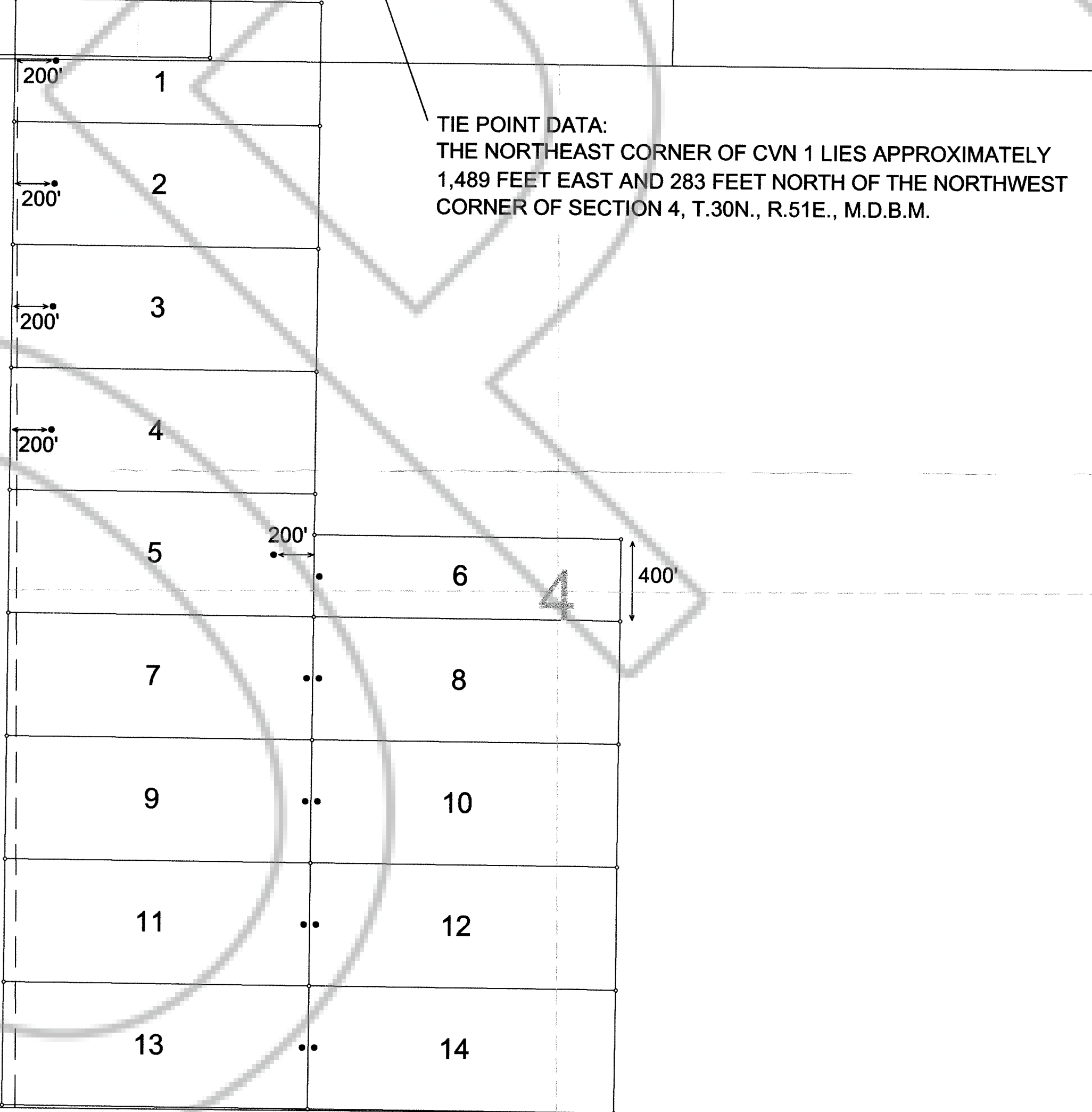


TIE POINT DATA:
THE NORTHEAST CORNER OF CVN 20 LIES APPROXIMATELY
977 FEET EAST AND 4,211 FEET NORTH OF THE NORTHWEST
CORNER OF SECTION 4, T.30N., R.51E., M.D.B.M.

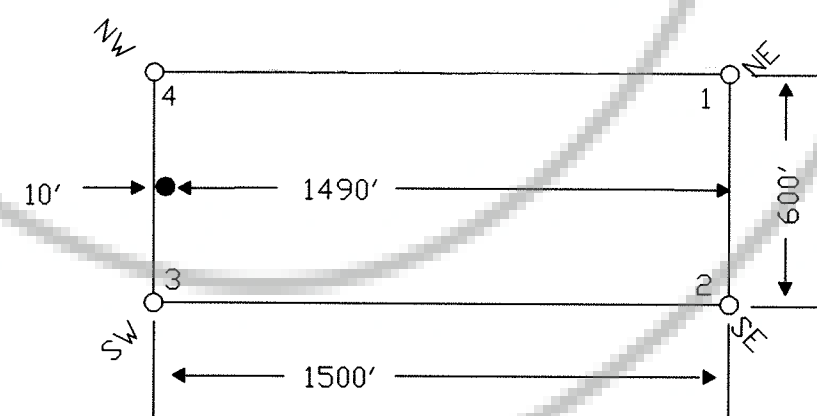
T.31N.
T.30N.



TIE POINT DATA:
THE NORTHEAST CORNER OF CVN 1 LIES APPROXIMATELY
1,489 FEET EAST AND 283 FEET NORTH OF THE NORTHWEST
CORNER OF SECTION 4, T.30N., R.51E., M.D.B.M.

5

TYPICAL CLAIM



LOCATION DATES:
10/14/02 - CVN 1-14, 19-32

NOTES:
LOCATION MONUMENTS SET 10' FROM CLAIM END
CENTERLINES, UNLESS OTHERWISE NOTED ON MAP.
ALL LOCATION MONUMENTS AND CLAIM POSTS ARE 2"x2"x4'
WOODEN STAKES.

DASHED SECTION LINES INDICATE PROJECTED SECTIONS.

FILED AT THE REQUEST OF *Nevada Gold Ventures*
on *Dec 5* 20 *02*, at *31* mins past *10* M.
RECORDS OF EUREKA COUNTY, NEVADA M. N. REBELETTI, Recorder
File No. **180279** Fee \$ *244.00*

310 SILVER STREET
PH: (775) 778-6668 ELKO, NV 89801 FAX: (775) 778-9687

NEVADA GOLD VENTURES
310 Silver Street, Elko, NV 89801
CVN Lode Claims 1-14, 19-32
T.30, 31N., R.51E.; Eureka County, Nevada

DATE: October 2002
ACAD FILE NAME: cvn_claims.dwg
PLOT SCALE: 1" = 500'
DRAWN BY: sms