

180624

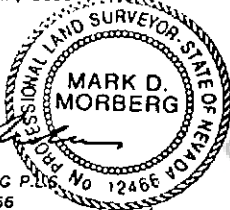
CORNER RECORD

EUREKA COUNTY, NEVADA

SURVEYOR'S CERTIFICATE

I, MARK D. MORBERG, A PROFESSIONAL LAND SURVEYOR LICENSED IN THE STATE OF NEVADA, CERTIFY THAT:

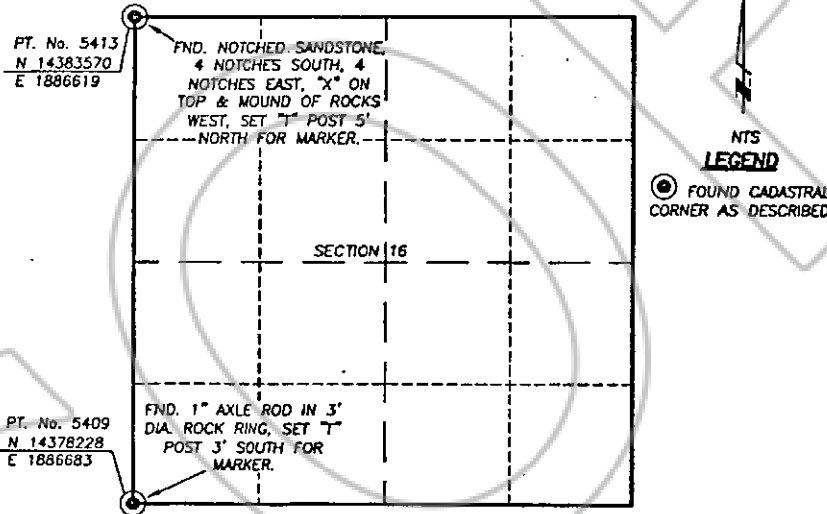
1. THIS CORNER RECORD REPRESENTS THE ESTABLISHMENT, RESTORATION, OR RECOVERY OF A CORNER OR ACCESSORY TO A CORNER CONDUCTED UNDER MY DIRECT SUPERVISION.
2. THE MONUMENT OR ACCESSORIES PERPETUATED LIE WITHIN SECTION 16, T.20 NORTH, R.52 EAST, M.D.M. EUREKA COUNTY, NEVADA AND THE ESTABLISHMENT OR RESTORATION WAS COMPLETED ON JULY 6, 2001.
3. THIS CORNER RECORD HAS BEEN FILED PURSUANT TO NRS 329.140 OR 329.150 AND COMPLIES WITH THE PROVISIONS OF NAC 329.010 AND ANY LOCAL ORDINANCES IN EFFECT ON THE DATE THAT THE ESTABLISHMENT OR RESTORATION WAS COMPLETED.
4. THE MONUMENT OR WITNESS MONUMENT AND ACCESSORIES FOUND ARE OF THE CHARACTER SHOWN, OCCUPY THE POSITIONS INDICATED, AND ARE OF SUFFICIENT DURABILITY.



MARK D. MORBERG P.L.S.
NEVADA NO. 12466

3/20/02

Section 16, Township 20 North, Range 52 East, MDW



BASIS OF COORDINATES

NAD 1983 (94 HARN ADJUSTMENT)
UTM, ZONE 11, US SURVEY FEET

NOTES:

1. THE ABOVE REFERENCED CORNER(S) WERE RECOVERED AS PART OF THE SIERRA PACIFIC POWER COMPANY FALCON PROJECT.

RECORDER'S INFORMATION

BOOK 357 PAGE 048
OFFICIAL RECORDS
Starlec Consulting Inc
02 DEC 23 PM 4:27

NEVADA
COUNTY CLERK/RECORDER
FILE NO. FEES 14.00

180624



Starlec Consulting Inc.
200 West Lake Street, Suite 100
Brea, California 92623
Tel: (714) 990-9223
Fax: (714) 990-9223
www.starlec.com

JOB No. B0400400
JANUARY 2002
SHEET 1 OF 1