

180626

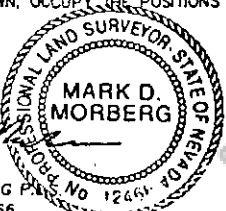
CORNER RECORD

EUREKA COUNTY, NEVADA

SURVEYOR'S CERTIFICATE

I, MARK D. MORBERG, A PROFESSIONAL LAND SURVEYOR LICENSED IN THE STATE OF NEVADA, CERTIFY THAT:

1. THIS CORNER RECORD REPRESENTS THE ESTABLISHMENT, RESTORATION, OR RECOVERY OF A CORNER OR ACCESSORY TO A CORNER CONDUCTED UNDER MY DIRECT SUPERVISION.
2. THE MONUMENT OR ACCESSORIES PERPETUATED LIE WITHIN SECTION 27, T.20 NORTH, R.53 EAST, M.D.M. EUREKA COUNTY, NEVADA AND THE ESTABLISHMENT OR RESTORATION WAS COMPLETED ON NOVEMBER 5, 2001.
3. THIS CORNER RECORD HAS BEEN FILED PURSUANT TO NRS 329.140 OR 329.150 AND COMPLIES WITH THE PROVISIONS OF NAC 329.010 AND ANY LOCAL ORDINANCES IN EFFECT ON THE DATE THAT THE ESTABLISHMENT OR RESTORATION WAS COMPLETED.
4. THE MONUMENT OR WITNESS MONUMENT AND ACCESSORIES FOUND ARE OF THE CHARACTER SHOWN, OCCUPY THE POSITIONS INDICATED, AND ARE OF SUFFICIENT DURABILITY.

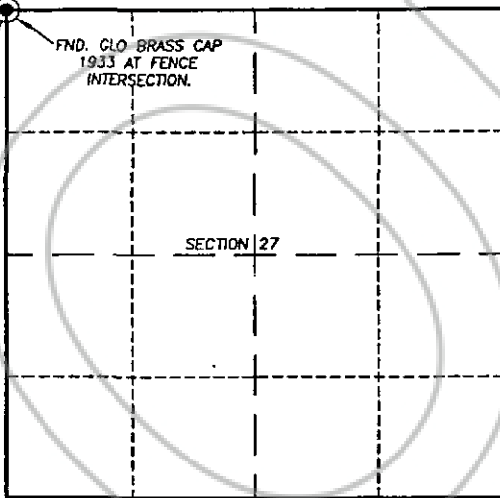


MARK D. MORBERG
NEVADA NO. 12466

Section 27, Township 20 North, Range 53 East, MDM

PT. No. 5715
N 14373182
E 1923537

FND. GLO BRASS CAP
1933 AT FENCE
INTERSECTION.



NTS
LEGEND

● FOUND CADASTRAL
CORNER AS DESCRIBED

RECORDER'S INFORMATION

BOOK 357 PAGE 050

OFFICIAL RECORDS

Stantec Consulting Inc.
02 DEC 23 P11 4-27

RECORDS NEVADA
FILE NO. FEES 1400

180626

BASIS OF COORDINATES

NAD 1983 (94 HARN ADJUSTMENT)
UTM, ZONE 11, US SURVEY FEET

NOTES:

1. THE ABOVE REFERENCED CORNER(S) WERE RECOVERED AS PART OF THE SIERRA PACIFIC POWER COMPANY FALCON PROJECT.



Stantec Consulting Inc.
400 West Lake Street, Suite 200
Spokane, Nevada 89411 USA
Tel: 775 433-0000
Fax: 775 433-0000
www.stantec.com

JOB No. 80400400

JANUARY 2002

SHEET 1 OF 1