

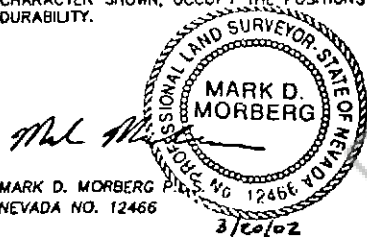
180627

**CORNER RECORD**

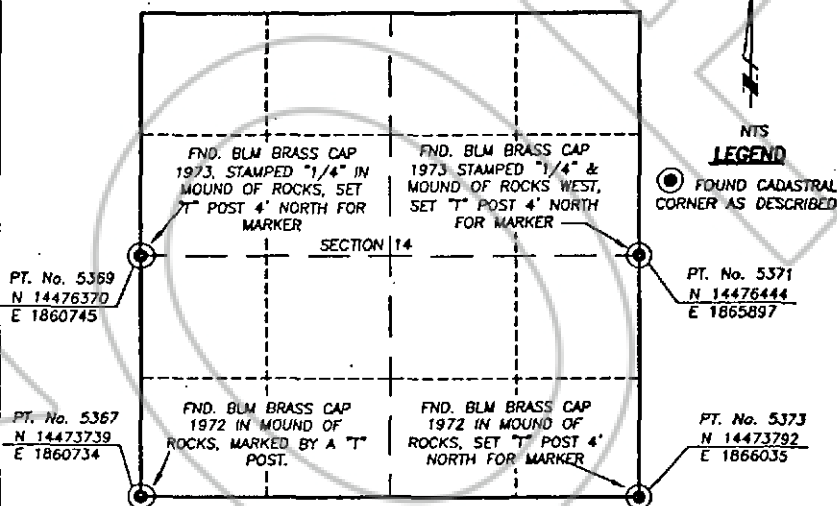
EUREKA COUNTY, NEVADA

**SURVEYOR'S CERTIFICATE**

- I, MARK D. MORBERG, A PROFESSIONAL LAND SURVEYOR LICENSED IN THE STATE OF NEVADA, CERTIFY THAT:
1. THIS CORNER RECORD REPRESENTS THE ESTABLISHMENT, RESTORATION, OR RECOVERY OF A CORNER OR ACCESSORY TO A CORNER CONDUCTED UNDER MY DIRECT SUPERVISION.
  2. THE MONUMENT OR ACCESSORIES PERPETUATED LIE WITHIN SECTION 14, T.23 NORTH, R.51 EAST, M.D.M. EUREKA COUNTY, NEVADA AND THE ESTABLISHMENT OR RESTORATION WAS COMPLETED ON JULY 6, 2001.
  3. THIS CORNER RECORD HAS BEEN FILED PURSUANT TO NRS 329.140 OR 329.150 AND COMPLIES WITH THE PROVISIONS OF NAC 329.010 AND ANY LOCAL ORDINANCES IN EFFECT ON THE DATE THAT THE ESTABLISHMENT OR RESTORATION WAS COMPLETED.
  4. THE MONUMENT OR WITNESS MONUMENT AND ACCESSORIES FOUND ARE OF THE CHARACTER SHOWN, OCCUPY THE POSITIONS INDICATED, AND ARE OF SUFFICIENT DURABILITY.



Section 14, Township 23 North, Range 51 East, MDM

**BASIS OF COORDINATES**

NAD 1983 (94 HARN ADJUSTMENT)  
UTM, ZONE 11, US SURVEY FEET

**NOTES:**

1. THE ABOVE REFERENCED CORNER(S) WERE RECOVERED AS PART OF THE SIERRA PACIFIC POWER COMPANY FALCON PROJECT.

**RECORDER'S INFORMATION**

BOOK 357 PAGE 051

OFFICIAL RECORDS

Stantec Consulting Inc  
02 DEC 23 PM 4: 27

NEVADA  
RECORDING  
FILE NO.  
FEES \$4.00

180627



Stantec Consulting Inc.  
2000 North Central Expressway, Suite 200  
Bloomington, Minnesota 55425-5000  
TEL: (763) 880-0111  
FAX: (763) 880-0111  
www.stantec.com

JOB No. 80400400

JANUARY 2002

SHEET 1 OF 1

BOOK 357 PAGE 051