

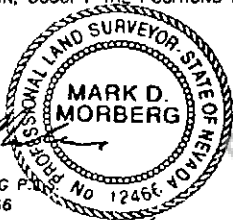
180631

CORNER RECORD
EUREKA COUNTY, NEVADA

SURVEYOR'S CERTIFICATE

I, MARK D. MORBERG, A PROFESSIONAL LAND SURVEYOR LICENSED IN THE STATE OF NEVADA, CERTIFY THAT:

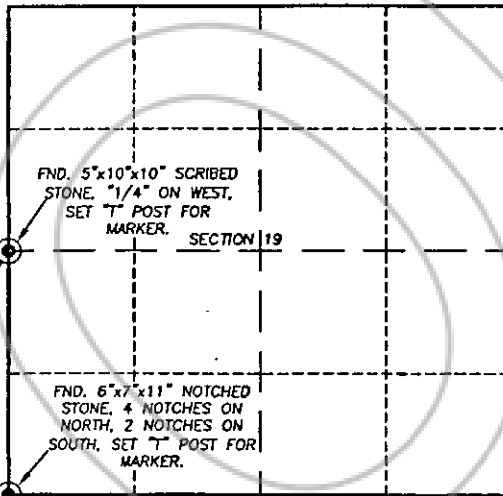
1. THIS CORNER RECORD REPRESENTS THE ESTABLISHMENT, RESTORATION, OR RECOVERY OF A CORNER OR ACCESSORY TO A CORNER CONDUCTED UNDER MY DIRECT SUPERVISION.
2. THE MONUMENT OR ACCESSORIES PERPETUATED LIE WITHIN SECTION 19, T.29 NORTH, R.52 EAST, M.O.M. EUREKA COUNTY, NEVADA AND THE ESTABLISHMENT OR RESTORATION WAS COMPLETED ON MARCH 7, 2001.
3. THIS CORNER RECORD HAS BEEN FILED PURSUANT TO NRS 329.140 OR 329.150 AND COMPLIES WITH THE PROVISIONS OF NAC 329.010 AND ANY LOCAL ORDINANCES IN EFFECT ON THE DATE THAT THE ESTABLISHMENT OR RESTORATION WAS COMPLETED.
4. THE MONUMENT OR WITNESS MONUMENT AND ACCESSORIES FOUND ARE OF THE CHARACTER SHOWN, OCCUPY THE POSITIONS INDICATED, AND ARE OF SUFFICIENT DURABILITY.



MARK D. MORBERG P.L.S.
NEVADA NO. 12466

3/20/02

Section 19, Township 29 North, Range 52 East, MDM



PT. No. 5319
N 14666449
E 1873984

PT. No. 5318
N 14663833
E 1874020

NTS

LEGEND

⊙ FOUND CADASTRAL CORNER AS DESCRIBED

BASIS OF COORDINATES

NAD 1983 (94 HARN ADJUSTMENT)
UTM, ZONE 11, US SURVEY FEET

NOTES:

1. THE ABOVE REFERENCED CORNER(S) WERE RECOVERED AS PART OF THE SIERRA PACIFIC POWER COMPANY FALCON PROJECT.

RECORDER'S INFORMATION

BOOK 357 PAGE 055

OFFICIAL RECORDS

Stantec Consulting Inc
02 DEC 23 PM 4: 27

TRADA
OFFICIAL RECORDER
FILE NO. FEES 14.00

180631



Stantec Consulting Inc.
200 Lakeside Drive, Suite 100
Eureka, NV 89001-1000
Tel: (775) 864-0177
www.stantec.com

JOB No. 80400400

JANUARY 2002

SHEET 1 OF 1