

180632

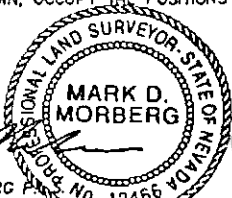
**CORNER RECORD**

EUREKA COUNTY, NEVADA

**SURVEYOR'S CERTIFICATE**

I, MARK D. MORBERG, A PROFESSIONAL LAND SURVEYOR LICENSED IN THE STATE OF NEVADA, CERTIFY THAT:

1. THIS CORNER RECORD REPRESENTS THE ESTABLISHMENT, RESTORATION, OR RECOVERY OF A CORNER OR ACCESSORY TO A CORNER CONDUCTED UNDER MY DIRECT SUPERVISION.
2. THE MONUMENT OR ACCESSORIES PERPETUATED LIE WITHIN SECTION 31, T.29 NORTH, R.52 EAST, M.D.M. EUREKA COUNTY, NEVADA AND THE ESTABLISHMENT OR RESTORATION WAS COMPLETED ON MARCH 7, 2001.
3. THIS CORNER RECORD HAS BEEN FILED PURSUANT TO NRS 329.140 OR 329.150 AND COMPLIES WITH THE PROVISIONS OF NAC 329.010 AND ANY LOCAL ORDINANCES IN EFFECT ON THE DATE THAT THE ESTABLISHMENT OR RESTORATION WAS COMPLETED.
4. THE MONUMENT OR WITNESS, MONUMENT AND ACCESSORIES FOUND ARE OF THE CHARACTER SHOWN, OCCUPY THE POSITIONS INDICATED, AND ARE OF SUFFICIENT DURABILITY.



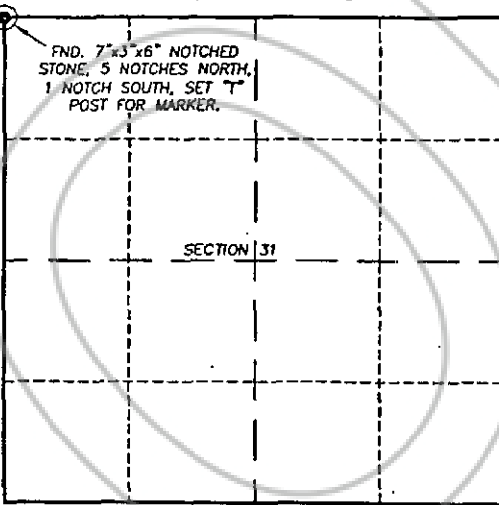
MARK D. MORBERG  
NEVADA NO. 12466

3/20/02

Section 31, Township 29 North, Range 52 East, MDM

PT. No. 5317  
N 14658577  
E 1874080

FND. 7"x3"x6" NOTCHED  
STONE, 5 NOTCHES NORTH,  
1 NOTCH SOUTH, SET "T"  
POST FOR MARKER.



NTS

**LEGEND**

● FOUND CADASTRAL  
CORNER AS DESCRIBED

**BASIS OF COORDINATES**

NAD 1983 (94 HARN ADJUSTMENT)  
UTM, ZONE 11, US SURVEY FEET

**NOTES:**

1. THE ABOVE REFERENCED CORNER(S) WERE RECOVERED AS PART OF THE SIERRA PACIFIC POWER COMPANY FALCON PROJECT.

**RECORDER'S INFORMATION**

BOOK 357 PAGE 056

OFFICIAL RECORD

Sierra Consulting Inc.  
02 DEC 23 Pm 4:28

RECORDING RECORDER  
FILE NO. FEES \$4.00

180632



Sierra Consulting Inc.  
948 North Linn Road, Suite 200  
Eureka, Nevada 89001  
Tel: (775) 861-8773  
Fax: (775) 861-8774  
www.sierrac.com

JOB No. 80400400

JANUARY 2002

SHEET 1 OF 1