

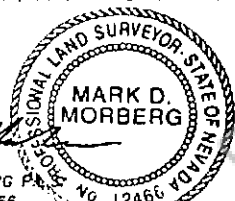
180633

CORNER RECORD

EUREKA COUNTY, NEVADA

SURVEYOR'S CERTIFICATE

- I, MARK D. MORBERG, A PROFESSIONAL LAND SURVEYOR LICENSED IN THE STATE OF NEVADA, CERTIFY THAT:
1. THIS CORNER RECORD REPRESENTS THE ESTABLISHMENT, RESTORATION, OR RECOVERY OF A CORNER OR ACCESSORY TO A CORNER CONDUCTED UNDER MY DIRECT SUPERVISION.
 2. THE MONUMENT OR ACCESSORIES PERPETUATED LIE WITHIN SECTION 18, T.29 NORTH, R.52 EAST, M.D.M. EUREKA COUNTY, NEVADA AND THE ESTABLISHMENT OR RESTORATION WAS COMPLETED ON MARCH 7, 2001.
 3. THIS CORNER RECORD HAS BEEN FILED PURSUANT TO NRS 329.140 OR 329.150 AND COMPLIES WITH THE PROVISIONS OF NAC 329.010 AND ANY LOCAL ORDINANCES IN EFFECT ON THE DATE THAT THE ESTABLISHMENT OR RESTORATION WAS COMPLETED.
 4. THE MONUMENT OR WITNESS MONUMENT AND ACCESSORIES FOUND ARE OF THE CHARACTER SHOWN, OCCUPY THE POSITIONS INDICATED, AND ARE OF SUFFICIENT DURABILITY.



Mark D. Morberg
 MARK D. MORBERG
 NEVADA NO. 12466

3/20/02

Section 18, Township 29 North, Range 52 East, MDM

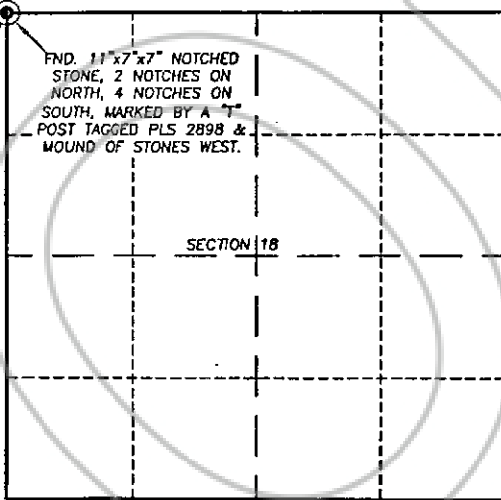
PT. No. 5300
 N 14674313
 E 1873910

FND. 11"x7"x7" NOTCHED
 STONE, 2 NOTCHES ON
 NORTH, 4 NOTCHES ON
 SOUTH, MARKED BY A "T"
 POST TAGGED PLS 2898 &
 MOUND OF STONES WEST.

NTS

LEGEND

⊙ FOUND CADASTRAL
 CORNER AS DESCRIBED



BASIS OF COORDINATES

NAD 1983 (84 HARN ADJUSTMENT)
 UTM, ZONE 11, US SURVEY FEET

NOTES:

1. THE ABOVE REFERENCED CORNER(S) WERE RECOVERED AS PART OF THE SIERRA PACIFIC POWER COMPANY FALCON PROJECT.

RECORDER'S INFORMATION

BOOK 357 PAGE 057
 OFFICIAL RECORDS
 REGISTERED AT THE OFFICE OF THE
Stanlec Consulting Inc
 02 DEC 23 PM 4:28

STATE OF NEVADA
 COUNTY CLERK
 FILE NO. FEES 14.00

180633



Stanlec Consulting Inc
 4800 West Center Parkway, Suite 100
 Reno, Nevada 89512-1000
 Tel: (775) 850-0177
 Fax: (775) 850-0178
 www.stanlec.com

JOB No. 80400400

JANUARY 2002

SHEET 1 OF 1