

180634

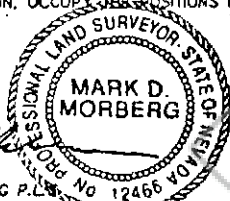
# CORNER RECORD

EUREKA COUNTY, NEVADA

## SURVEYOR'S CERTIFICATE

I, MARK D. MORBERG, A PROFESSIONAL LAND SURVEYOR LICENSED IN THE STATE OF NEVADA, CERTIFY THAT:

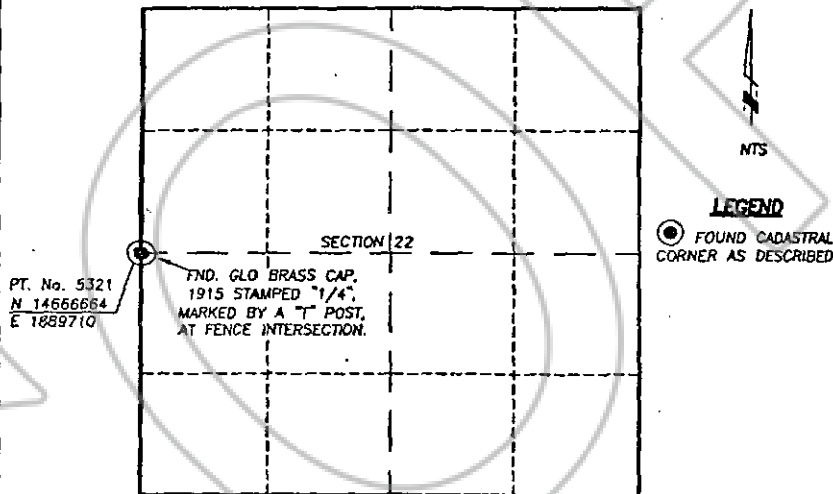
1. THIS CORNER RECORD REPRESENTS THE ESTABLISHMENT, RESTORATION, OR RECOVERY OF A CORNER OR ACCESSORY TO A CORNER CONDUCTED UNDER MY DIRECT SUPERVISION.
2. THE MONUMENT OR ACCESSORIES PERPETUATED LIE WITHIN SECTION 22, T.29 NORTH, R.52 EAST, M.D.M. EUREKA COUNTY, NEVADA AND THE ESTABLISHMENT OR RESTORATION WAS COMPLETED ON MARCH 7, 2001.
3. THIS CORNER RECORD HAS BEEN FILED PURSUANT TO NRS 329.140 OR 329.150 AND COMPLIES WITH THE PROVISIONS OF NAC 329.010 AND ANY LOCAL ORDINANCES IN EFFECT ON THE DATE THAT THE ESTABLISHMENT OR RESTORATION WAS COMPLETED.
4. THE MONUMENT OR WITNESS MONUMENT AND ACCESSORIES FOUND ARE OF THE CHARACTER SHOWN, OCCUPY THE POSITIONS INDICATED, AND ARE OF SUFFICIENT DURABILITY.



MARK D. MORBERG P.L.S.  
NEVADA NO. 12466

3/24/02

Section 22, Township 29 North, Range 52 East, MDM



## BASIS OF COORDINATES

NAD 1983 (94 HARN ADJUSTMENT)  
UTM, ZONE 11, US SURVEY FEET

## NOTES:

1. THE ABOVE REFERENCED CORNER(S) WERE RECOVERED AS PART OF THE SIERRA PACIFIC POWER COMPANY FALCON PROJECT.

## RECORDER'S INFORMATION

BOOK 357 PAGE 058

OFFICIAL RECORD

Atlantic Consulting Inc  
02 DEC 23 PM 4:28

RECORDED IN NEVADA  
FILE NO. 180634  
FEE \$14.00

180634



Atlantic Consulting Inc  
800 South County Parkway Suite 200  
Bismarck, ND 58102-9911 USA  
TEL: (701) 785-6111  
FAX: (701) 785-6117  
WWW.ATLANTIC-CONSULTING.COM

JOB No. 80400400

JANUARY 2002

SHEET 1 OF 1