

180639

**CORNER RECORD**

EUREKA COUNTY, NEVADA

**SURVEYOR'S CERTIFICATE**

I, MARK D. MORBERG, A PROFESSIONAL LAND SURVEYOR LICENSED IN THE STATE OF NEVADA, CERTIFY THAT:

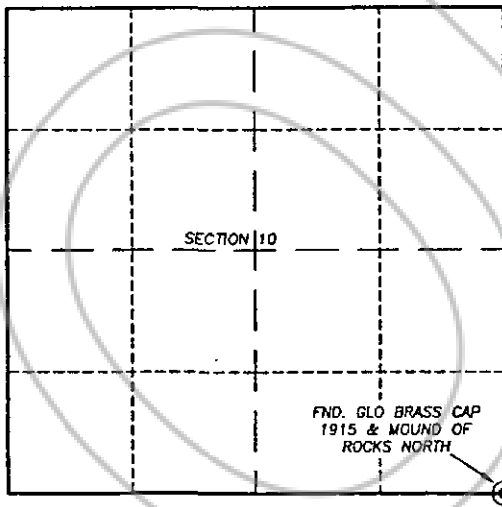
1. THIS CORNER RECORD REPRESENTS THE ESTABLISHMENT, RESTORATION, OR RECOVERY OF A CORNER OR ACCESSORY TO A CORNER CONDUCTED UNDER MY DIRECT SUPERVISION.
2. THE MONUMENT OR ACCESSORIES PERPETUATED LIE WITHIN SECTION 10, T.30 NORTH, R.51 EAST, M.D.M. EUREKA COUNTY, NEVADA AND THE ESTABLISHMENT OR RESTORATION WAS COMPLETED ON OCTOBER 18, 2000.
3. THIS CORNER RECORD HAS BEEN FILED PURSUANT TO NRS 329.140 OR 329.150 AND COMPLES WITH THE PROVISIONS OF NAC 329.010 AND ANY LOCAL ORDINANCES IN EFFECT ON THE DATE THAT THE ESTABLISHMENT OR RESTORATION WAS COMPLETED.
4. THE MONUMENT OR WITNESS MONUMENT AND ACCESSORIES FOUND ARE OF THE CHARACTER SHOWN, OCCUR AT THE POSITIONS INDICATED, AND ARE OF SUFFICIENT DURABILITY.



MARK D. MORBERG P.L.S.  
NEVADA NO. 12466

3/20/02

Section 10, Township 30 North, Range 51 East, MDM



NTS

**LEGEND**

● FOUND CADASTRAL  
CORNER AS DESCRIBED

PT. No. 5162  
N 14701585  
E 1859983

**RECORDER'S INFORMATION**

BOOK 357 PAGE 063  
OFFICIAL RECORDS  
Siatic Consulting done  
02 DEC 23 P11 4:29

NEVADA  
PUBLIC RECORDS  
FILE NO. FEES \$9.00

180639

**BASIS OF COORDINATES**

NAC 1983 (94 HARN ADJUSTMENT)  
UTM, ZONE 11, US SURVEY FEET

**NOTES:**

1. THE ABOVE REFERENCED CORNER(S) WERE RECOVERED AS PART OF THE SIERRA PACIFIC POWER COMPANY FALCON PROJECT.



Siatic Consulting Inc.  
1000 South Linn Road, Suite 100  
Reno, NV 89502  
Tel: (775) 844-4777  
Fax: (775) 844-4781  
www.siatic.com

JOB No. 80400400

JANUARY 2002

SHEET 1 OF 1