

180640

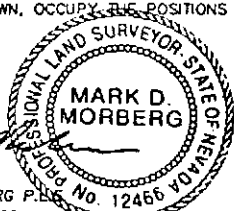
CORNER RECORD

EUREKA COUNTY, NEVADA

SURVEYOR'S CERTIFICATE

I, MARK D. MORBERG, A PROFESSIONAL LAND SURVEYOR LICENSED IN THE STATE OF NEVADA, CERTIFY THAT:

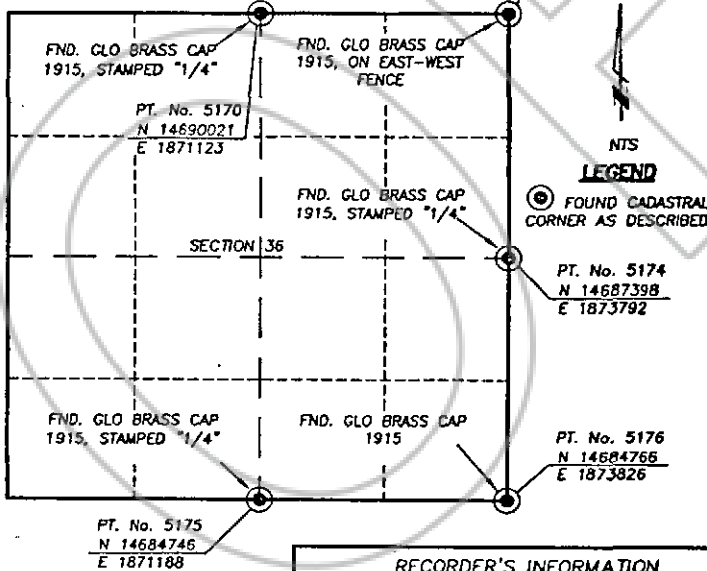
1. THIS CORNER RECORD REPRESENTS THE ESTABLISHMENT, RESTORATION, OR RECOVERY OF A CORNER OR ACCESSORY TO A CORNER CONDUCTED UNDER MY DIRECT SUPERVISION.
2. THE MONUMENT OR ACCESSORIES PERPETUATED LIE WITHIN SECTION 36, T.30 NORTH, R.51 EAST, M.D.M. EUREKA COUNTY, NEVADA AND THE ESTABLISHMENT OR RESTORATION WAS COMPLETED ON OCTOBER 18, 2000.
3. THIS CORNER RECORD HAS BEEN FILED PURSUANT TO NRS 329.140 OR 329.150 AND COMPLIES WITH THE PROVISIONS OF NAC 329.010 AND ANY LOCAL ORDINANCES IN EFFECT ON THE DATE THAT THE ESTABLISHMENT OR RESTORATION WAS COMPLETED.
4. THE MONUMENT OR WITNESS MONUMENT AND ACCESSORIES FOUND ARE OF THE CHARACTER SHOWN, OCCUPY THE POSITIONS INDICATED, AND ARE OF SUFFICIENT DURABILITY.



MARK D. MORBERG P.L.S.
NEVADA NO. 12466

PT. No. 5169
N 14690043
E 1873765

Section 36, Township 30 North, Range 51 East, MDM



NTS
LEGEND
⊙ FOUND CADASTRAL CORNER AS DESCRIBED

PT. No. 5174
N 14687398
E 1873792

PT. No. 5176
N 14684766
E 1873826

PT. No. 5175
N 14684746
E 1871188

RECORDER'S INFORMATION

BOOK 357 PAGE 064
OFFICIAL RECORDS
RECORDED & INDEXED
Startec Consulting Inc
02 DEC 23 PM 4:29

RECORDED IN NEVADA
BY RECORDER
FILE NO. FEES 14.00

180640

BASIS OF COORDINATES

NAD 1983 (94 HARN ADJUSTMENT)
UTM, ZONE 11, US SURVEY FEET

NOTES:

1. THE ABOVE REFERENCED CORNER(S) WERE RECOVERED AS PART OF THE SIERRA PACIFIC POWER COMPANY FALCON PROJECT.



Startec Consulting Inc.
2000 South Loop West, Suite 200
Bloomington, Nevada 89002
Tel: 775-430-6177
Fax: 775-430-6187
www.startec.com

JOB No. 80400400

JANUARY 2002

SHEET 1 OF 1