

180642

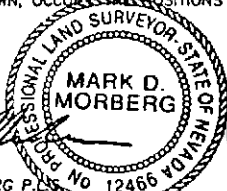
CORNER RECORD

EUREKA COUNTY, NEVADA

SURVEYOR'S CERTIFICATE

I, MARK D. MORBERG, A PROFESSIONAL LAND SURVEYOR LICENSED IN THE STATE OF NEVADA, CERTIFY THAT:

1. THIS CORNER RECORD REPRESENTS THE ESTABLISHMENT, RESTORATION, OR RECOVERY OF A CORNER OR ACCESSORY TO A CORNER CONDUCTED UNDER MY DIRECT SUPERVISION.
2. THE MONUMENT OR ACCESSORIES PERPETUATED LIE WITHIN SECTION 24, T.30 NORTH, R.51 EAST, M.D.M. EUREKA COUNTY, NEVADA AND THE ESTABLISHMENT OR RESTORATION WAS COMPLETED ON OCTOBER 18, 2000.
3. THIS CORNER RECORD HAS BEEN FILED PURSUANT TO NRS 329.140 OR 329.150 AND COMPLIES WITH THE PROVISIONS OF NAC 329.010 AND ANY LOCAL ORDINANCES IN EFFECT ON THE DATE THAT THE ESTABLISHMENT OR RESTORATION WAS COMPLETED.
4. THE MONUMENT OR WITNESS MONUMENT AND ACCESSORIES FOUND ARE OF THE CHARACTER SHOWN, OCCUR IN THE POSITIONS INDICATED, AND ARE OF SUFFICIENT DURABILITY.

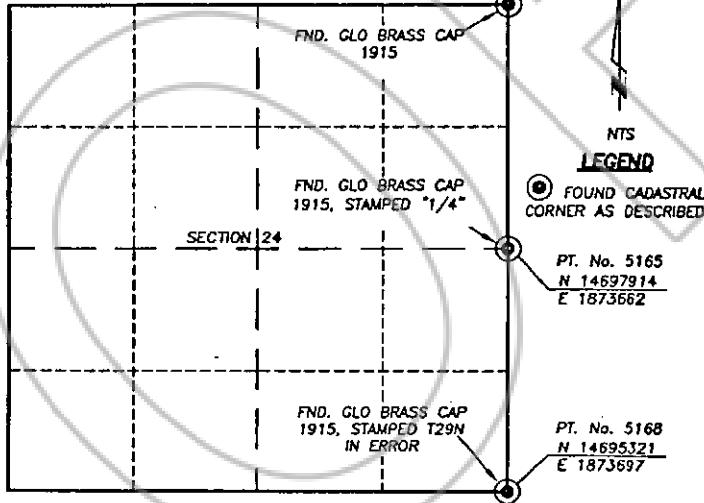


MARK D. MORBERG P.L.S.
NEVADA NO. 12466

3/10/02

PT. No. 5166
N 14700588
E 1873636

Section 24, Township 30 North, Range 51 East, MDM



NTS
LEGEND

● FOUND CADASTRAL
CORNER AS DESCRIBED

PT. No. 5165
N 14697914
E 1873662

PT. No. 5168
N 14695321
E 1873697

RECORDER'S INFORMATION

BOOK 357 PAGE 066

OFFICIAL RECORDS

Stantec Consulting Inc

02 DEC 23 PM 4:29

NEVADA
PUBLIC RECORDS RECORDER
FILE NO. FEES 14.00

180642

BASIS OF COORDINATES

NAD 1983 (94 HARN ADJUSTMENT)
UTM, ZONE 11, US SURVEY FEET

NOTES:

1. THE ABOVE REFERENCED CORNER(S) WERE RECOVERED AS PART OF THE SIERRA PACIFIC POWER COMPANY FALCON PROJECT.



Stantec Consulting Inc.
900 North Carson Parkway, Suite 200
Reno, Nevada 89511-1102
Tel: (775) 966-5777
Fax: (775) 400-8787
www.stantec.com

JOB No. 80400400

JANUARY 2002

SHEET 1 OF 1

BOOK 357 PAGE 066