

180643

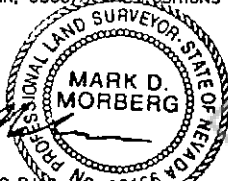
CORNER RECORD

EUREKA COUNTY, NEVADA

SURVEYOR'S CERTIFICATE

I, MARK D. MORBERG, A PROFESSIONAL LAND SURVEYOR LICENSED IN THE STATE OF NEVADA, CERTIFY THAT:

1. THIS CORNER RECORD REPRESENTS THE ESTABLISHMENT, RESTORATION, OR RECOVERY OF A CORNER OR ACCESSORY TO A CORNER CONDUCTED UNDER MY DIRECT SUPERVISION.
2. THE MONUMENT OR ACCESSORIES PERPETUATED LIE WITHIN SECTION 32, T.30 NORTH, R.52 EAST, M.D.M. EUREKA COUNTY, NEVADA AND THE ESTABLISHMENT OR RESTORATION WAS COMPLETED ON MARCH 7, 2001.
3. THIS CORNER RECORD HAS BEEN FILED PURSUANT TO NRS 329.140 OR 329.150 AND COMPLIES WITH THE PROVISIONS OF NAC 329.010 AND ANY LOCAL ORDINANCES IN EFFECT ON THE DATE THAT THE ESTABLISHMENT OR RESTORATION WAS COMPLETED.
4. THE MONUMENT OR WITNESS MONUMENT AND ACCESSORIES FOUND ARE OF THE CHARACTER SHOWN, OCCUPY THE POSITIONS INDICATED, AND ARE OF SUFFICIENT DURABILITY.

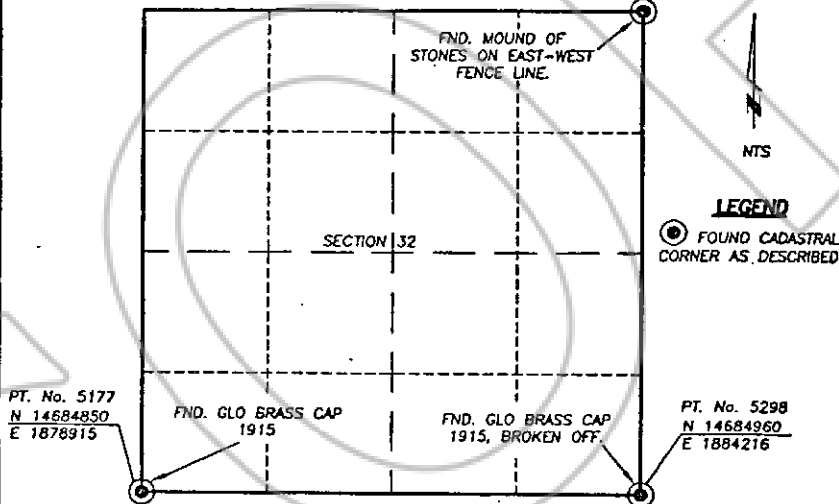


MARK D. MORBERG P.L.S.
NEVADA NO. 12466

3/20/02

PT. No. 5173
N 14690256
E 1884173

Section 32, Township 30 North, Range 52 East, MDM



BASIS OF COORDINATES

NAD 1983 (94 HARN ADJUSTMENT)
UTM, ZONE 11, US SURVEY FEET

NOTES:

1. THE ABOVE REFERENCED CORNER(S) WERE RECOVERED AS PART OF THE SIERRA PACIFIC POWER COMPANY FALCON PROJECT.

RECORDER'S INFORMATION

BOOK 357 PAGE 067
OFFICIAL RECORDS

Stantec Consulting Inc.
02 DEC 23 PM 4:29

NEVADA
PUBLIC RECORDS
FILE NO. FEES \$4.00

180643



Stantec Consulting Inc.
4800 Santa Fe Drive, Suite 200
Boulder, Colorado 80501-2298
Tel: (303) 440-4277
Fax: (303) 440-4278
www.stantec.com

JOB No. 80400400
JANUARY 2002

SHEET 1 OF 1