

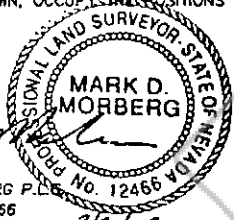
180645

CORNER RECORD

EUREKA COUNTY, NEVADA

SURVEYOR'S CERTIFICATE

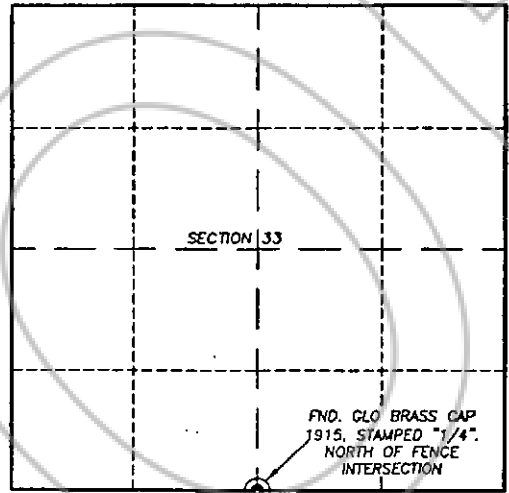
- I, MARK D. MORBERG, A PROFESSIONAL LAND SURVEYOR LICENSED IN THE STATE OF NEVADA, CERTIFY THAT:
1. THIS CORNER RECORD REPRESENTS THE ESTABLISHMENT, RESTORATION, OR RECOVERY OF A CORNER OR ACCESSORY TO A CORNER CONDUCTED UNDER MY DIRECT SUPERVISION.
 2. THE MONUMENT OR ACCESSORIES PERPETUATED LIE WITHIN SECTION 33, T.30 NORTH, R.52 EAST, M.D.M. EUREKA COUNTY, NEVADA AND THE ESTABLISHMENT OR RESTORATION WAS COMPLETED ON OCTOBER 18, 2000.
 3. THIS CORNER RECORD HAS BEEN FILED PURSUANT TO NRS 329.140 OR 329.150 AND COMPLIES WITH THE PROVISIONS OF NAC 329.010 AND ANY LOCAL ORDINANCES IN EFFECT ON THE DATE THAT THE ESTABLISHMENT OR RESTORATION WAS COMPLETED.
 4. THE MONUMENT OR WITNESS MONUMENT AND ACCESSORIES FOUND ARE OF THE CHARACTER SHOWN, OCCUPY THE POSITIONS INDICATED, AND ARE OF SUFFICIENT DURABILITY.



MARK D. MORBERG P.L.S. No. 12466
NEVADA No. 12466

3/20/02

Section 33, Township 30 North, Range 52 East, MDM



LEGEND
 ● FOUND CADASTRAL CORNER AS DESCRIBED

PT. No. 5178
N 146850.33
E 1886840

BASIS OF COORDINATES
 NAD 1983 (94 HARN ADJUSTMENT)
 UTM, ZONE 11, US SURVEY FEET

NOTES:
 1. THE ABOVE REFERENCED CORNER(S) WERE RECOVERED AS PART OF THE SIERRA PACIFIC POWER COMPANY FALCON PROJECT.

RECORDER'S INFORMATION

BOOK 357 PAGE 069
 OFFICIAL RECORDS
 REGISTERED AT THE PROPER OFFICE
 Static Consulting Inc.
 02 DEC 23 PM 4:29
 STATE OF NEVADA
 COUNTY CLERK/RECORDER
 FILE NO. FEES 14.00

180645



Static Consulting Inc.
 9900 South Central Expressway, Suite 100
 Reno, Nevada 89513 USA
 Phone: (775) 744-0177
 Fax: (775) 744-0191
 www.static.com

JOB No. 80400400
 JANUARY 2002
 SHEET 1 OF 1