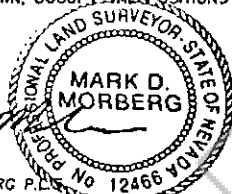


180646

CORNER RECORD
EUREKA COUNTY, NEVADA
SURVEYOR'S CERTIFICATE

I, MARK D. MORBERG, A PROFESSIONAL LAND SURVEYOR LICENSED IN THE STATE OF NEVADA, CERTIFY THAT:

1. THIS CORNER RECORD REPRESENTS THE ESTABLISHMENT, RESTORATION, OR RECOVERY OF A CORNER OR ACCESSORY TO A CORNER CONDUCTED UNDER MY DIRECT SUPERVISION.
2. THE MONUMENT OR ACCESSORIES PERPETUATED LIE WITHIN SECTION 10, T.31 NORTH, R.48 EAST, M.D.M. EUREKA COUNTY, NEVADA AND THE ESTABLISHMENT OR RESTORATION WAS COMPLETED ON OCTOBER 18, 2000.
3. THIS CORNER RECORD HAS BEEN FILED PURSUANT TO NRS 329.140 OR 329.150 AND COMPLIES WITH THE PROVISIONS OF NAC 329.010 AND ANY LOCAL ORDINANCES IN EFFECT ON THE DATE THAT THE ESTABLISHMENT OR RESTORATION WAS COMPLETED.
4. THE MONUMENT OR WITNESS MONUMENT AND ACCESSORIES FOUND ARE OF THE CHARACTER SHOWN, OCCUPY THE POSITIONS INDICATED, AND ARE OF SUFFICIENT DURABILITY.

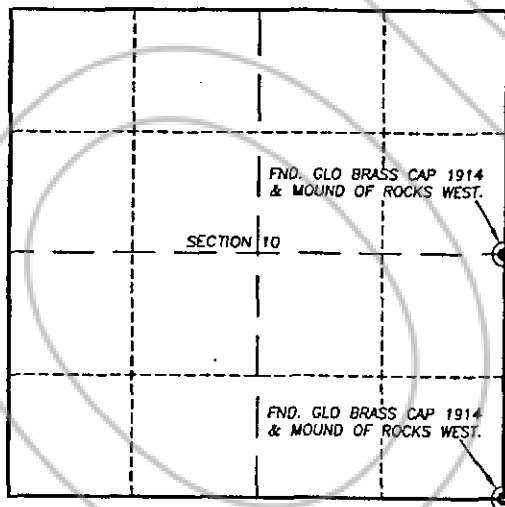


M.D. Morberg
 MARK D. MORBERG P.L.S.
 NEVADA NO. 12466
 3/20/02



NTS

Section 10, Township 31 North, Range 48 East, MDM



LEGEND
 ● FOUND CADASTRAL CORNER AS DESCRIBED

BASIS OF COORDINATES

NAD 1983 (94 HARN ADJUSTMENT)
UTM, ZONE 11, US SURVEY FEET

NOTES:

1. THE ABOVE REFERENCED CORNER(S) WERE RECOVERED AS PART OF THE SIERRA PACIFIC POWER COMPANY FALCON PROJECT.

RECORDER'S INFORMATION

BOOK 357 PAGE 070
 OFFICIAL RECORDS
 TOWNSHIP 31 NORTH, RANGE 48 EAST, M.D.M.
Stantec Consulting Inc
 02 DEC 23 P11 4:30

NEVADA
 COUNTY RECORDER
 FILE NO. FEES 14.00



Stantec Consulting Inc.
 4840 Lakeside Parkway, Suite 200
 Denver, Colorado 80231-1704
 Tel: 303.350.0177
 Fax: 303.350.0172
 www.stantec.com

JOB No. 80400400
 JANUARY 2002
 SHEET 1 OF 1

180646