

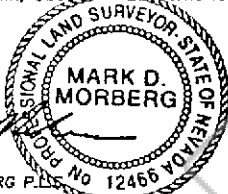
180651

CORNER RECORD

EUREKA COUNTY, NEVADA

SURVEYOR'S CERTIFICATE

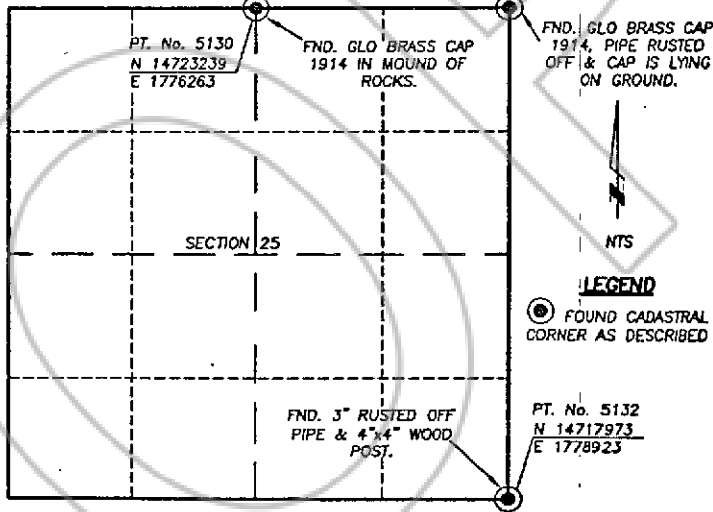
1. MARK D. MORBERG, A PROFESSIONAL LAND SURVEYOR LICENSED IN THE STATE OF NEVADA, CERTIFY THAT:
1. THIS CORNER RECORD REPRESENTS THE ESTABLISHMENT, RESTORATION, OR RECOVERY OF A CORNER OR ACCESSORY TO A CORNER CONDUCTED UNDER MY DIRECT SUPERVISION.
2. THE MONUMENT OR ACCESSORIES PERPETUATED LIE WITHIN SECTION 25, T.31 NORTH, R.48 EAST, M.D.M. EUREKA COUNTY, NEVADA AND THE ESTABLISHMENT OR RESTORATION WAS COMPLETED ON OCTOBER 18, 2000.
3. THIS CORNER RECORD HAS BEEN FILED PURSUANT TO NRS 329.140 OR 329.150 AND COMPLIES WITH THE PROVISIONS OF NAC 329.010 AND ANY LOCAL ORDINANCES IN EFFECT ON THE DATE THAT THE ESTABLISHMENT OR RESTORATION WAS COMPLETED.
4. THE MONUMENT OR WITNESS MONUMENT AND ACCESSORIES FOUND ARE OF THE CHARACTER SHOWN, OCCUR AT THE POSITIONS INDICATED, AND ARE OF SUFFICIENT DURABILITY.



Mark D. Morberg
 MARK D. MORBERG P.L.S.
 NEVADA NO. 12466
 3/20/02

PT. No. 5131
 N 14723259
 E 1778911

Section 25, Township 31 North, Range 48 East, MDM



BASIS OF COORDINATES

NAD 1983 (94 HARN ADJUSTMENT)
 UTM, ZONE 11, US SURVEY FEET

NOTES:

1. THE ABOVE REFERENCED CORNER(S) WERE RECOVERED AS PART OF THE SIERRA PACIFIC POWER COMPANY FALCON PROJECT.

RECORDER'S INFORMATION

BOOK 357 PAGE 075
 OFFICIAL RECORDS
Stantec Consulting Inc.
 02 DEC 23 PM 4:30
 NEVADA
 PUBLIC RECORDS
 FILE NO. FEES 14.00

180651



Stantec Consulting Inc.
 9400 Santa Teresa Avenue, Suite 100
 Reno, Nevada 89515-1174
 Tel: (775) 850-0727
 Fax: (775) 850-0737
 www.stantec.com

JOB No. 80400400

JANUARY 2002

SHEET 1 OF 1