

180653

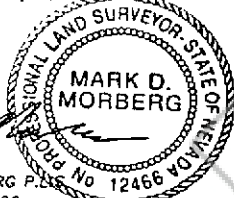
CORNER RECORD

EUREKA COUNTY, NEVADA

SURVEYOR'S CERTIFICATE

I, MARK D. MORBERG, A PROFESSIONAL LAND SURVEYOR LICENSED IN THE STATE OF NEVADA, CERTIFY THAT:

1. THIS CORNER RECORD REPRESENTS THE ESTABLISHMENT, RESTORATION, OR RECOVERY OF A CORNER OR ACCESSORY TO A CORNER CONDUCTED UNDER MY DIRECT SUPERVISION.
2. THE MONUMENT OR ACCESSORIES PERPETUATED LIE WITHIN SECTION 35, T.31 NORTH, R.49 EAST, M.D.M. EUREKA COUNTY, NEVADA AND THE ESTABLISHMENT OR RESTORATION WAS COMPLETED ON OCTOBER 18, 2000.
3. THIS CORNER RECORD HAS BEEN FILED PURSUANT TO NRS 329.140 OR 329.150 AND COMPLIES WITH THE PROVISIONS OF NAC 329.010 AND ANY LOCAL ORDINANCES IN EFFECT ON THE DATE THAT THE ESTABLISHMENT OR RESTORATION WAS COMPLETED.
4. THE MONUMENT OR WITNESS MONUMENT AND ACCESSORIES FOUND ARE OF THE CHARACTER SHOWN, OCCUPY THE POSITIONS INDICATED, AND ARE OF SUFFICIENT DURABILITY.



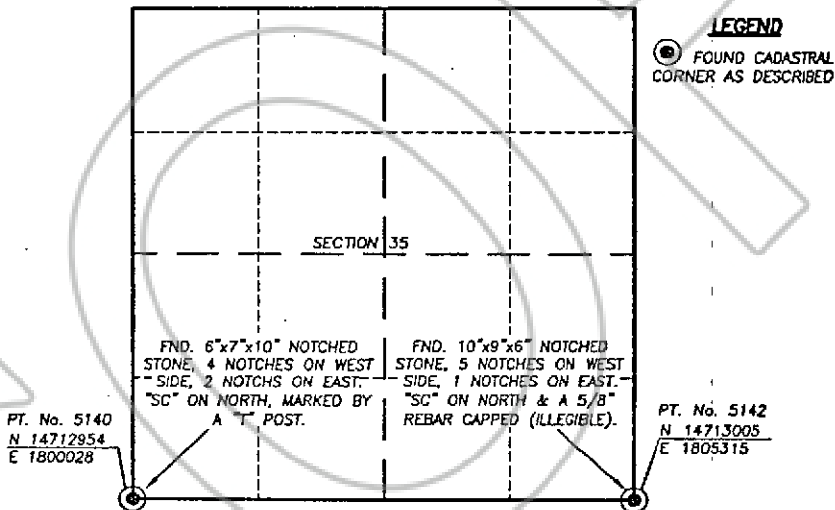
MARK D. MORBERG P.L.S.
NEVADA NO. 12466

Section 35, Township 31 North, Range 49 East, MDW

NTS

LEGEND

● FOUND CADASTRAL CORNER AS DESCRIBED



BASIS OF COORDINATES

NAD 1983 (94 HARN ADJUSTMENT)
UTM, ZONE 11, US SURVEY FEET

NOTES:

1. THE ABOVE REFERENCED CORNER(S) WERE RECOVERED AS PART OF THE SIERRA PACIFIC POWER COMPANY FALCON PROJECT.

RECORDER'S INFORMATION

BOOK 357 PAGE 677
OFFICIAL RECORDS

Stantec Consulting Inc
02 DEC 23 PM 4:30

NEVADA
GENERAL CATION RECORDER
FILE NO. FEES \$4.00



Stantec Consulting Inc.
1000 Lakeside Drive, Suite 100
Boulder, Colorado 80501-1144
Tel: 303.440.2200
Fax: 303.440.2202
www.stantec.com

JOB No. 80400400

JANUARY 2002

SHEET 1 OF 1

180653