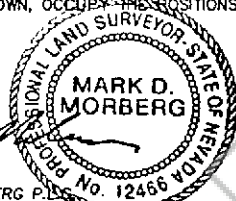


180654

CORNER RECORD
EUREKA COUNTY, NEVADA
SURVEYOR'S CERTIFICATE

- I, MARK D. MORBERG, A PROFESSIONAL LAND SURVEYOR LICENSED IN THE STATE OF NEVADA, CERTIFY THAT:
1. THIS CORNER RECORD REPRESENTS THE ESTABLISHMENT, RESTORATION, OR RECOVERY OF A CORNER OR ACCESSORY TO A CORNER CONDUCTED UNDER MY DIRECT SUPERVISION.
 2. THE MONUMENT OR ACCESSORIES PERPETUATED LIE WITHIN SECTION 13, T.31 NORTH, R.49 EAST, M.D.M. EUREKA COUNTY, NEVADA AND THE ESTABLISHMENT OR RESTORATION WAS COMPLETED ON JULY 6, 2001.
 3. THIS CORNER RECORD HAS BEEN FILED PURSUANT TO NRS 329.140 OR 329.150 AND COMPLIES WITH THE PROVISIONS OF NAC 329.010 AND ANY LOCAL ORDINANCES IN EFFECT ON THE DATE THAT THE ESTABLISHMENT OR RESTORATION WAS COMPLETED.
 4. THE MONUMENT OR WITNESS MONUMENT AND ACCESSORIES FOUND ARE OF THE CHARACTER SHOWN, OCCUPY THE POSITIONS INDICATED, AND ARE OF SUFFICIENT DURABILITY.

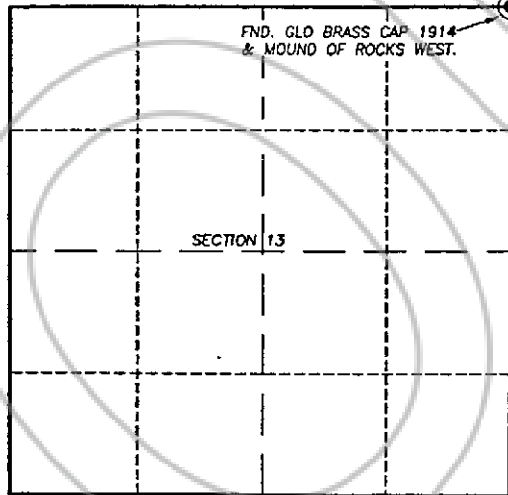


MARK D. MORBERG P.L.S.
NEVADA NO. 12466

3/20/02

PT. No. 5609
N 14734051
E 1810083

Section 13, Township 31 North, Range 49 East, MDM



NTS

LEGEND
● FOUND CADASTRAL CORNER AS DESCRIBED

BASIS OF COORDINATES

NAD 1983 (94 HARN ADJUSTMENT)
UTM, ZONE 11, US SURVEY FEET

NOTES:

1. THE ABOVE REFERENCED CORNER(S) WERE RECOVERED AS PART OF THE SIERRA PACIFIC POWER COMPANY FALCON PROJECT.

RECORDER'S INFORMATION

BOOK 357 PAGE 078
OFFICIAL RECORDS
Sierratic Consulting Inc
02 DEC 23 PM 4:30

REGISTERED IN NEVADA
COUNTY RECORDER
FILE NO. FEES 14.00

180654



Sierratic Consulting Inc.
4800 Sand Center Parkway, Suite 200
Reno, Nevada 89512-1170
Tel: (775) 850-0777
Fax: (775) 850-0781
www.sierratic.com

JOB No. 80400400
JANUARY 2002

SHEET 1 OF 1