

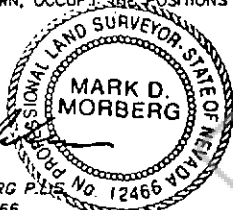
180655

**CORNER RECORD**

EUREKA COUNTY, NEVADA

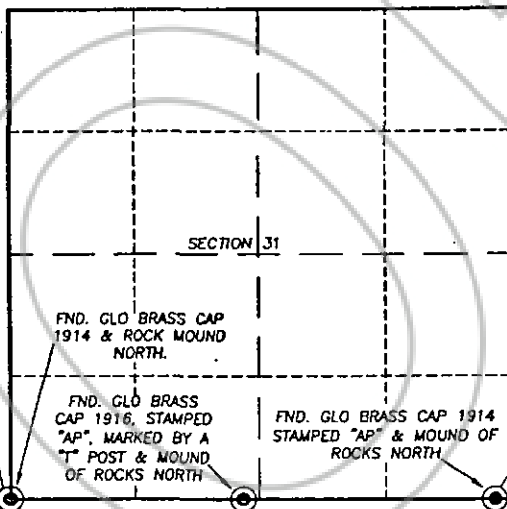
**SURVEYOR'S CERTIFICATE**

- I, MARK D. MORBERG, A PROFESSIONAL LAND SURVEYOR LICENSED IN THE STATE OF NEVADA, CERTIFY THAT:
1. THIS CORNER RECORD REPRESENTS THE ESTABLISHMENT, RESTORATION, OR RECOVERY OF A CORNER OR ACCESSORY TO A CORNER CONDUCTED UNDER MY DIRECT SUPERVISION.
  2. THE MONUMENT OR ACCESSORIES PERPETUATED LIE WITHIN SECTION 31, T.31-NORTH, R.50 EAST, M.D.M. EUREKA COUNTY, NEVADA AND THE ESTABLISHMENT OR RESTORATION WAS COMPLETED ON OCTOBER 18, 2000.
  3. THIS CORNER RECORD HAS BEEN FILED PURSUANT TO NRS 329.140 OR 329.150 AND COMPLIES WITH THE PROVISIONS OF NAC 329.010 AND ANY LOCAL ORDINANCES IN EFFECT ON THE DATE THAT THE ESTABLISHMENT OR RESTORATION WAS COMPLETED.
  4. THE MONUMENT OR WITNESS MONUMENT AND ACCESSORIES FOUND ARE OF THE CHARACTER SHOWN, OCCUPY THE POSITIONS INDICATED, AND ARE OF SUFFICIENT DURABILITY.



*Mark D. Morberg*  
 MARK D. MORBERG P.L.S.  
 NEVADA NO. 12466  
 3/20/02

Section 31, Township 31 North, Range 50 East, MDM



**LEGEND**  
 (Symbol) FOUND CADASTRAL CORNER AS DESCRIBED

**BASIS OF COORDINATES**  
 NAD 1983 (94 HARN ADJUSTMENT)  
 UTM, ZONE 11, US SURVEY FEET

**NOTES:**  
 1. THE ABOVE REFERENCED CORNER(S) WERE RECOVERED AS PART OF THE SIERRA PACIFIC POWER COMPANY FALCON PROJECT.

**RECORDER'S INFORMATION**

BOOK 357 PAGE 079  
 OFFICIAL RECORDS  
 Stantec Consulting Inc  
 02 DEC 23 P11 4:31  
 NEVADA  
 FILE NO. RECORDER FEES 14.00

180655



Stantec Consulting Inc.  
 488 Sandy Lane, Nevada, NV 89401  
 Phone: 775.333.1234  
 Fax: 775.333.1234  
 www.stantec.com

JOB No. 80400400  
 JANUARY 2002  
 SHEET 1 OF 1