

180658

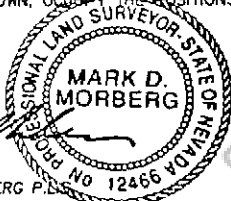
### CORNER RECORD

EUREKA COUNTY, NEVADA

#### SURVEYOR'S CERTIFICATE

I, MARK D. MORBERG, A PROFESSIONAL LAND SURVEYOR LICENSED IN THE STATE OF NEVADA, CERTIFY THAT:

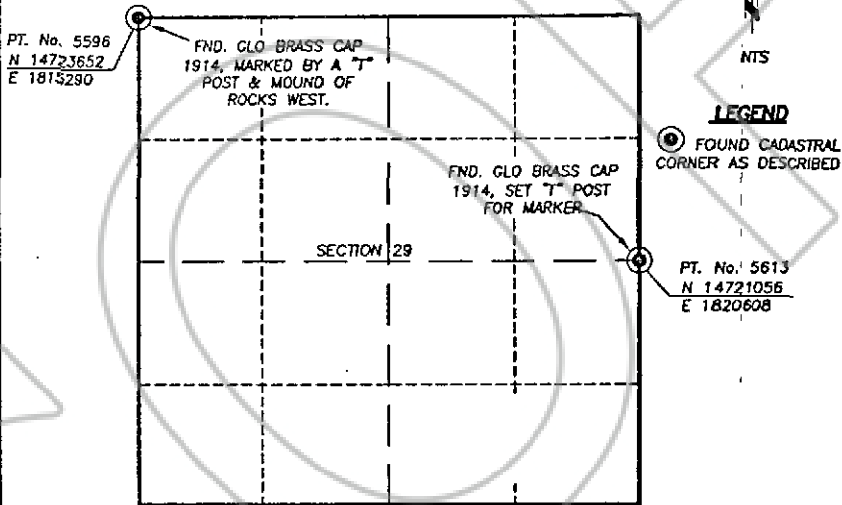
1. THIS CORNER RECORD REPRESENTS THE ESTABLISHMENT, RESTORATION, OR RECOVERY OF A CORNER OR ACCESSORY TO A CORNER CONDUCTED UNDER MY DIRECT SUPERVISION.
2. THE MONUMENT OR ACCESSORIES PERPETUATED LIE WITHIN SECTION 29, T.31 NORTH, R.50 EAST, M.D.M. EUREKA COUNTY, NEVADA AND THE ESTABLISHMENT OR RESTORATION WAS COMPLETED ON JULY 6, 2001.
3. THIS CORNER RECORD HAS BEEN FILED PURSUANT TO NRS 329.140 OR 329.150 AND COMPLIES WITH THE PROVISIONS OF NAC 329.010 AND ANY LOCAL ORDINANCES IN EFFECT ON THE DATE THAT THE ESTABLISHMENT OR RESTORATION WAS COMPLETED.
4. THE MONUMENT OR WITNESS MONUMENT AND ACCESSORIES FOUND ARE OF THE CHARACTER SHOWN, OCCUPY THE POSITIONS INDICATED, AND ARE OF SUFFICIENT DURABILITY.



MARK D. MORBERG P.L.S.  
NEVADA NO. 12466

3/22/02

Section 29, Township 31 North, Range 50 East, MDM



#### BASIS OF COORDINATES

NAD 1983 (94 HARN ADJUSTMENT)  
UTM, ZONE 11, US SURVEY FEET

#### NOTES:

1. THE ABOVE REFERENCED CORNER(S) WERE RECOVERED AS PART OF THE SIERRA PACIFIC POWER COMPANY FALCON PROJECT.

#### RECORDER'S INFORMATION

BOOK 357 PAGE 082

OFFICIAL RECORDS

RECORDED AT THE OFFICE OF THE  
*Stantec Consulting Inc*  
02 DEC 23 PII 4-31

RECORDING IN NEVADA  
REBALANCE RECORDER  
FILE NO. FEES 14.00

180658



Stantec Consulting Inc.  
1000 Lakes Center Parkway Suite 100  
Plymouth, Nevada 89424-1000  
Tel: (775) 850-2717  
www.stantec.com

JOB No. 80400400

JANUARY 2002

SHEET 1 OF 1

BOOK 357 PAGE 082