

180659

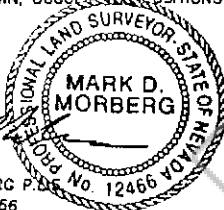
### CORNER RECORD

EUREKA COUNTY, NEVADA

#### SURVEYOR'S CERTIFICATE

I, MARK D. MORBERG, A PROFESSIONAL LAND SURVEYOR LICENSED IN THE STATE OF NEVADA, CERTIFY THAT:

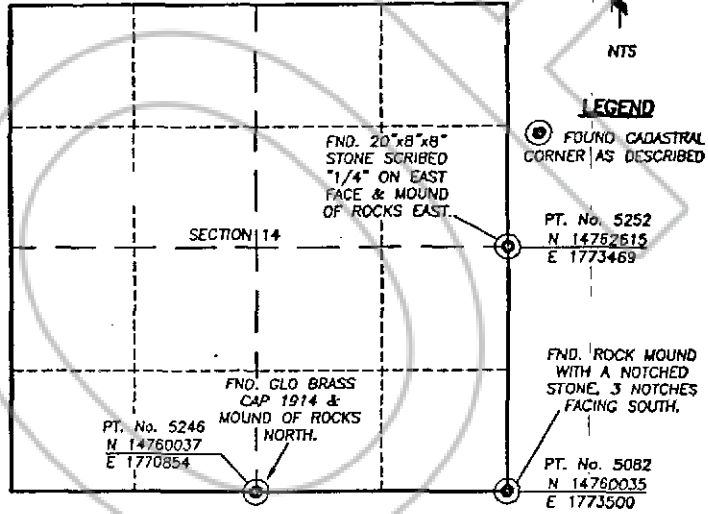
1. THIS CORNER RECORD REPRESENTS THE ESTABLISHMENT, RESTORATION, OR RECOVERY OF A CORNER OR ACCESSORY TO A CORNER CONDUCTED UNDER MY DIRECT SUPERVISION.
2. THE MONUMENT OR ACCESSORIES PERPETUATED LIE WITHIN SECTION 14, T.32 NORTH, R.48 EAST, W.D.M. EUREKA COUNTY, NEVADA AND THE ESTABLISHMENT OR RESTORATION WAS COMPLETED ON FEBRUARY 26, 2001.
3. THIS CORNER RECORD HAS BEEN FILED PURSUANT TO NRS 329.140 OR 329.150 AND COMPLIES WITH THE PROVISIONS OF NAC 329.010 AND ANY LOCAL ORDINANCES IN EFFECT ON THE DATE THAT THE ESTABLISHMENT OR RESTORATION WAS COMPLETED.
4. THE MONUMENT OR WITNESS MONUMENT AND ACCESSORIES FOUND ARE OF THE CHARACTER SHOWN, OCCUPY THE POSITIONS INDICATED, AND ARE OF SUFFICIENT DURABILITY.



MARK D. MORBERG P.L.S. No. 12466  
NEVADA NO. 12466

3/20/02

Section 14, Township 32 North, Range 48 East, MDM



#### BASIS OF COORDINATES

NAD 1983 (94 HARN ADJUSTMENT)  
UTM, ZONE 11, US SURVEY FEET

#### NOTES:

1. THE ABOVE REFERENCED CORNER(S) WERE RECOVERED AS PART OF THE SIERRA PACIFIC POWER COMPANY FALCON PROJECT.

#### RECORDER'S INFORMATION

BOOK 357 PAGE 083  
OFFICIAL RECORDS  
RECORDED AT THE OFFICE OF  
*Stanlec Consulting Inc*  
02 DEC 23 PM 4:31  
RECORDED IN NEVADA  
BY REGALATI, RECORDER  
FILE NO. FEES 14.00

180659



Stanlec Consulting Inc.  
4440 Sunset Canyon Drive, Ste. 100  
Reno, Nevada 89513 USA  
Tel: (775) 334-0727  
Fax: (775) 334-0787  
www.stanlec.com

JOB No. 80400400  
JANUARY 2002  
SHEET 1 OF 1