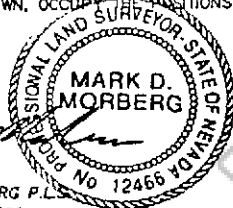


180662

**CORNER RECORD**  
EUREKA COUNTY, NEVADA  
**SURVEYOR'S CERTIFICATE**

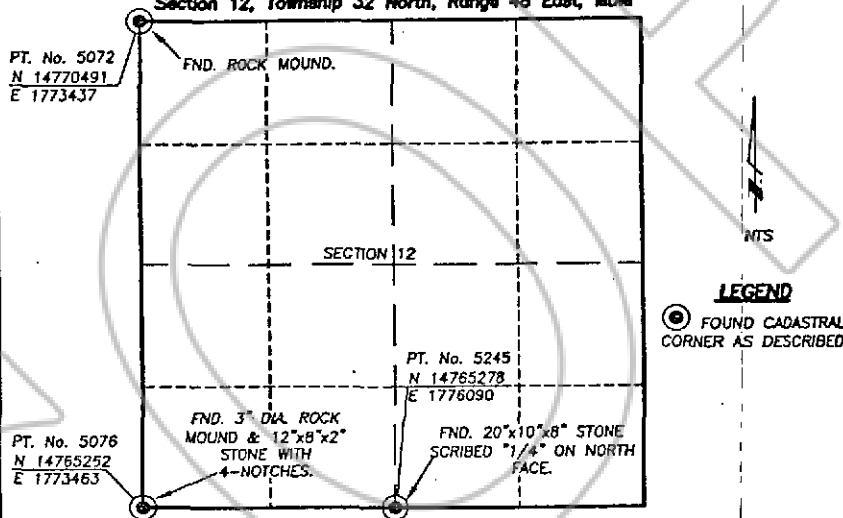
I, MARK D. MORBERG, A PROFESSIONAL LAND SURVEYOR LICENSED IN THE STATE OF NEVADA, CERTIFY THAT:

1. THIS CORNER RECORD REPRESENTS THE ESTABLISHMENT, RESTORATION, OR RECOVERY OF A CORNER OR ACCESSORY TO A CORNER CONDUCTED UNDER MY DIRECT SUPERVISION.
2. THE MONUMENT OR ACCESSORIES PERPETUATED LIE WITHIN SECTION 12, T.32 NORTH, R.48 EAST, M.D.M. EUREKA COUNTY, NEVADA AND THE ESTABLISHMENT OR RESTORATION WAS COMPLETED ON FEBRUARY 26, 2001.
3. THIS CORNER RECORD HAS BEEN FILED PURSUANT TO NRS 329.140 OR 329.150 AND COMPLIES WITH THE PROVISIONS OF NAC 329.010 AND ANY LOCAL ORDINANCES IN EFFECT ON THE DATE THAT THE ESTABLISHMENT OR RESTORATION WAS COMPLETED.
4. THE MONUMENT OR WITNESS MONUMENT AND ACCESSORIES FOUND ARE OF THE CHARACTER SHOWN, OCCUPY THE POSITIONS INDICATED, AND ARE OF SUFFICIENT DURABILITY.



MARK D. MORBERG P.L.S.  
NEVADA NO. 12466

Section 12, Township 32 North, Range 48 East, MDM



**LEGEND**  
⊙ FOUND CADASTRAL CORNER AS DESCRIBED

**BASIS OF COORDINATES**

NAD 1983 (94 HARN ADJUSTMENT)  
UTM, ZONE 11, US SURVEY FEET

**NOTES:**

1. THE ABOVE REFERENCED CORNER(S) WERE RECOVERED AS PART OF THE SIERRA PACIFIC POWER COMPANY FALCON PROJECT.

**RECORDER'S INFORMATION**

BOOK 357 PAGE 086  
OFFICIAL RECORDS  
RECORDED IN THE PUBLIC RECORDS  
Siatic Consulting Inc.  
02 DEC 23 PM 4:31

NEVADA  
PUBLIC RECORDS RECORDER  
FILE NO. FEES \$4.00

180662



Siatic Consulting Inc.  
9800 Sycamore Avenue, Suite 100  
Reno, Nevada 89512 USA  
Tel: (775) 496-2777  
Fax: (775) 496-4187  
www.siatic.com

JOB No. 80400400  
JANUARY 2002

SHEET 1 OF 1